

Intellectual property of Fieldstone Family Homes, Inc. © 2008. ALL RIGHTS RESERVED. These plan drawings, including but not limited to, all text, designs, renditions, floor plans, along with the selection and arrangement of thereof, are original copyrighted materials owned by Fieldstone Family Homes, Inc. These materials are protected by federal law against unauthorized copying, or reproduction by unauthorized persons and entities.

MN LIC: BC631164
WI LIC: DC-070800080

CLIENT:
Project:

LOCATION:
LOT _ BLK_ DEVELOPMENT

Street
CITY
MN ZIP
JOB #:

REVISION 1	
REVISION 2	
REVISION 3	
REVISION 4	
REVISION 5	
REVISION 6	
REVISION 7	
REVISION 8	
REVISION 9	
REVISION 10	
REVISION 11	
FINAL	

All changes after above date will be done according to F.F.H. Change Order Policy

Homeowner Signature

Agent:
Plan:
Total Foundation:
House Foundation:
Finished:
Unfinished:

Scale: 1/4" = 1'-0"

Fin Sq Ft:



REAR ELEVATION
1/8" = 1'-0"



LEFT ELEVATION
1/8" = 1'-0"

GUTTERS
WHOLE
HOUSE



RIGHT ELEVATION
1/8" = 1'-0"



FRONT ELEVATION
1/8" = 1'-0"

Intellectual property of Fieldstone Family Homes, Inc. © 2008. ALL RIGHTS RESERVED. These plan drawings, including but not limited to, all text, designs, renditions, floor plans, along with the selection and arrangement of thereof, are original copyrighted materials owned by Fieldstone Family Homes, Inc. These materials are protected by federal law against unauthorized copying, or reproduction by unauthorized persons and entities.

MN LIC: BC631164
WI LIC: DC-070800080

CLIENT:
Project:

LOCATION:
LOT_BLK_
DEVELOPMENT

Street
CITY
MN ZIP
JOB #:

REVISION 1	
REVISION 2	
REVISION 3	
REVISION 4	
REVISION 5	
REVISION 6	
REVISION 7	
REVISION 8	
REVISION 9	
REVISION 10	
REVISION 11	
FINAL	

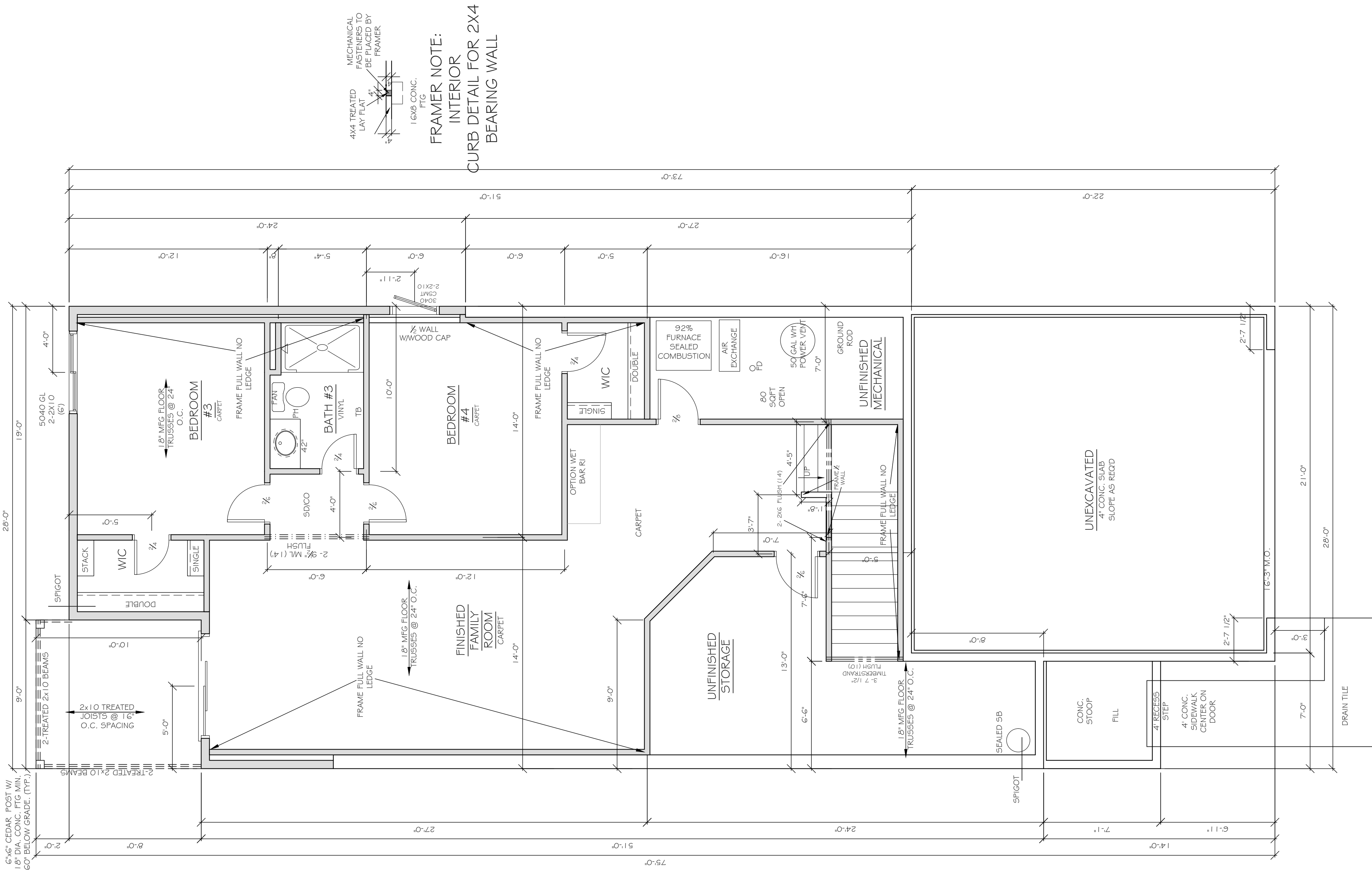
All changes after above date will be done according to F.F.H. Change Order Policy

Homeowner
Signature

Agent:
Plan:
Total Foundation:
House Foundation:
Finished:
Unfinished:

Scale: 1/4" = 1'-0"

Fin Sq Ft:



MECHANICAL FASTENERS TO LAY FLAT BE PLACED BY FRAMER

4x4 TREATED LAY FLAT

16x8 CONC. FTG

FRAMER NOTE:
INTERIOR CURB DETAIL FOR 2x4 BEARING WALL

Intellectual property of Fieldstone Family Homes, Inc. © 2008. ALL RIGHTS RESERVED. These plan drawings, including but not limited to, all text, designs, renditions, floor plans, along with the selection and arrangement of thereof, are original copyrighted materials owned by Fieldstone Family Homes, Inc. These materials are protected by federal law against unauthorized copying, or reproduction by unauthorized persons and entities.

MN LIC: BC631164
WI LIC: DC-070800080

CLIENT:
Project:

LOCATION:
LOT_BLK_
DEVELOPMENT

Street
CITY
MN ZIP
JOB #:

REVISION 1	
REVISION 2	
REVISION 3	
REVISION 4	
REVISION 5	
REVISION 6	
REVISION 7	
REVISION 8	
REVISION 9	
REVISION 10	
REVISION 11	
FINAL	

All changes after above date will be done according to F.F.H. Change Order Policy

Homeowner
Signature

Agent:
Plan:
Total Foundation:
House Foundation:
Finished:
Unfinished:

Scale: 1/4" = 1'-0"

Fin Sq Ft:

