



8150 Barbara Avenue  
Inver Grove Heights  
Minnesota 55077

651-450-2500

[www.ighmn.gov](http://www.ighmn.gov)

October 12, 2021

Builders Lot Group  
Melvin Moore  
[mlmoore00@yahoo.com](mailto:mlmoore00@yahoo.com)

Re: Address Assignment Request - Eagles Landing

Melvin,

In conformance with the Dakota County Uniform Street Naming and Addressing Grid the addresses for the plat of Eagles Landing subdivision have been assigned. This subdivision is located off the street to be known as Bovey Trail, located west of North Valley park. The addresses for the development are demonstrated on the enclosed plat map.

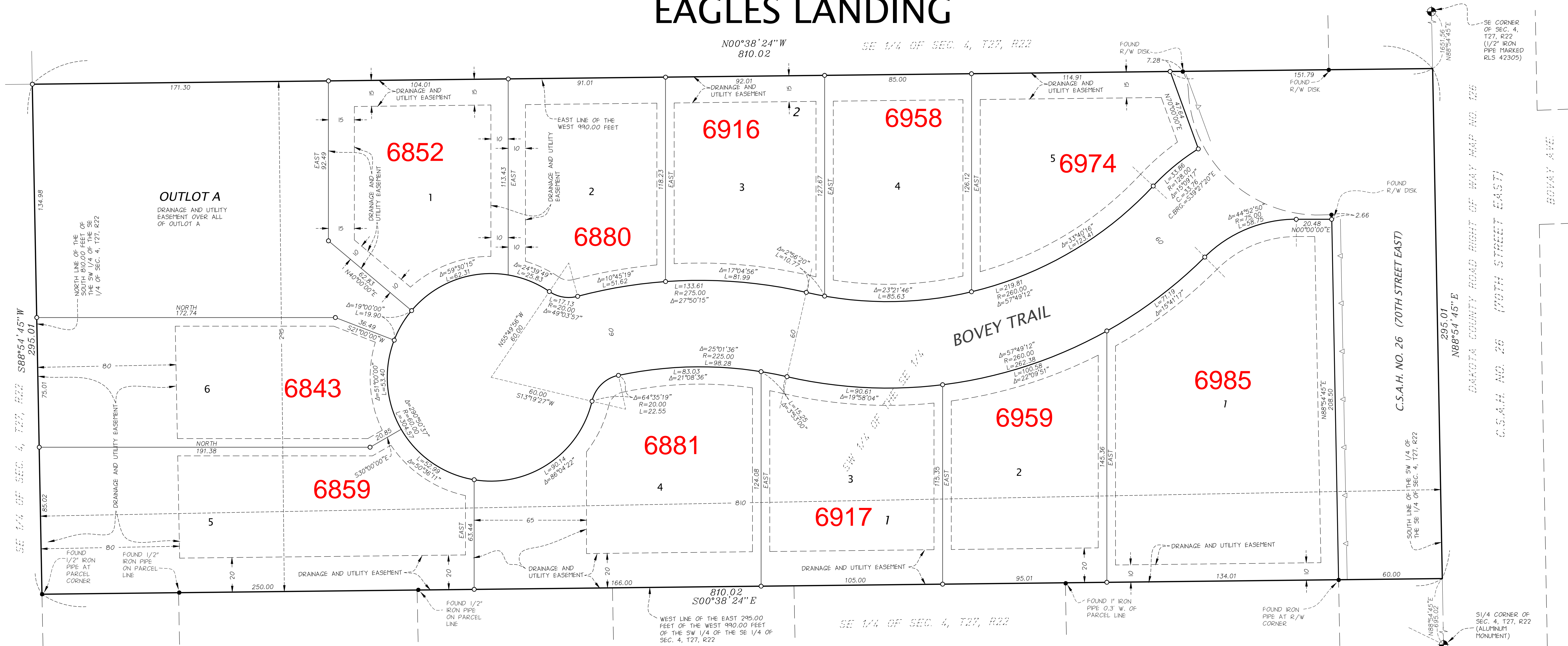
If you have any questions or would like additional information, please contact me at 651.450.2569 or e-mail [hbotten@ighmn.gov](mailto:hbotten@ighmn.gov).

Sincerely,

Heather Botten  
Associate Planner

C: Inver Grove Heights Inspections  
Inver Grove Heights Streets  
Inver Grove Heights Police  
City Clerk  
Troy Ruby, Dakota Communications Center  
Todd Lusk, Dakota County Physical Development Division  
UPS - St. Croix Center  
Postmaster

# EAGLES LANDING



KNOW ALL PERSONS BY THESE PRESENTS: That Builders Lot Group, LLC, a Minnesota limited liability company, owner of the following described property:

The east 295 feet of the south 810 feet of the west 60 Rods of the west 1/2 of the Southeast 1/4 of Section 4, Township 27, Range 22, Dakota County, Minnesota.

Has caused the same to be surveyed and platted as EAGLES LANDING and does hereby dedicate to the public the ways and the easements for drainage and utility purposes as created by this plat.

In witness whereof said Builders Lot Group, LLC, a Minnesota limited liability company, has caused these presents to be signed this \_\_\_\_\_ day of \_\_\_\_\_, 20\_\_\_\_.

SIGNED: BUILDERS LOT GROUP, LLC  
By \_\_\_\_\_, Melvin Moore, chief manager.

STATE OF \_\_\_\_\_  
COUNTY OF \_\_\_\_\_

This instrument was acknowledged before me this \_\_\_\_\_ day of \_\_\_\_\_, 20\_\_\_\_, by Melvin Moore, chief manager, Builders Lot Group, LLC, a Minnesota limited liability company.

Notary Public \_\_\_\_\_ County, \_\_\_\_\_  
My Commission Expires \_\_\_\_\_

I, Daniel L. Thurmes do hereby certify that this plat was prepared by me or under my direct supervision; that I am a duly Licensed Land Surveyor in the State of Minnesota; that this plat is a correct representation of the boundary survey; that all mathematical data and labels are correctly designated on this plat; that all monuments depicted on this plat have been, or will be correctly set within one year; that all water boundaries and wet lands, as defined in Minnesota Statutes, Section 505.01, Subd. 3, as of the date of this certificate are shown and labeled on this plat; and all public ways are shown and labeled on this plat.

Dated this \_\_\_\_\_ day of \_\_\_\_\_, 20\_\_\_\_.

Daniel L. Thurmes, Licensed Land Surveyor  
Minnesota License No. 25718

STATE OF MINNESOTA  
COUNTY OF WASHINGTON  
This instrument was acknowledged before me this \_\_\_\_\_ day of \_\_\_\_\_, 20\_\_\_\_, by Daniel L. Thurmes, a Licensed Land Surveyor.

Notary Public \_\_\_\_\_ County, \_\_\_\_\_  
My Commission Expires \_\_\_\_\_

PLANNING COMMISSION, INVER GROVE HEIGHTS, MINNESOTA  
Approved by the Planning Commission of the City of Inver Grove Heights, Minnesota, this \_\_\_\_\_ day of \_\_\_\_\_, 20\_\_\_\_.

By \_\_\_\_\_, Chair  
By \_\_\_\_\_, Secretary

CITY COUNCIL, INVER GROVE HEIGHTS, MINNESOTA  
This plat of EAGLES LANDING was approved and accepted by the City Council of the City of Inver Grove Heights, Minnesota, at a regular meeting thereof held this \_\_\_\_\_ day of \_\_\_\_\_, 20\_\_\_\_, and is in compliance with the provisions of Minnesota Statutes, Section 505.03, Subd. 2.

By: \_\_\_\_\_, Mayor  
Attest: \_\_\_\_\_, City Clerk

COUNTY SURVEYOR, DAKOTA COUNTY, MINNESOTA  
I hereby certify that in accordance with Minnesota Statutes, Section 505.021, Subd 11, this plat has been reviewed and approved this \_\_\_\_\_ day of \_\_\_\_\_, 20\_\_\_\_.

By: \_\_\_\_\_, Todd B. Tollefson, Dakota County Surveyor

COUNTY BOARD OF COMMISSIONERS  
We do hereby certify that on the 9th day of March, 2021, the Board of Commissioners of Dakota County, Minnesota, approved this plat of EAGLES LANDING, and said plat is in compliance with the provisions of Minnesota Statutes, Section 505.03, Subd. 2, and pursuant to the Dakota County Contiguous Plat Ordinance.

By \_\_\_\_\_, Chair Attest \_\_\_\_\_, Chair  
County Treasurer - Auditor

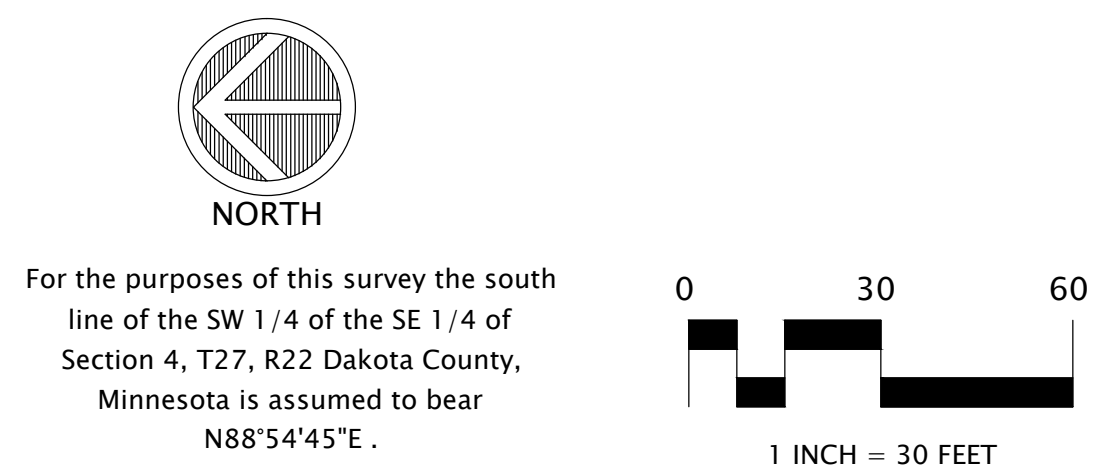
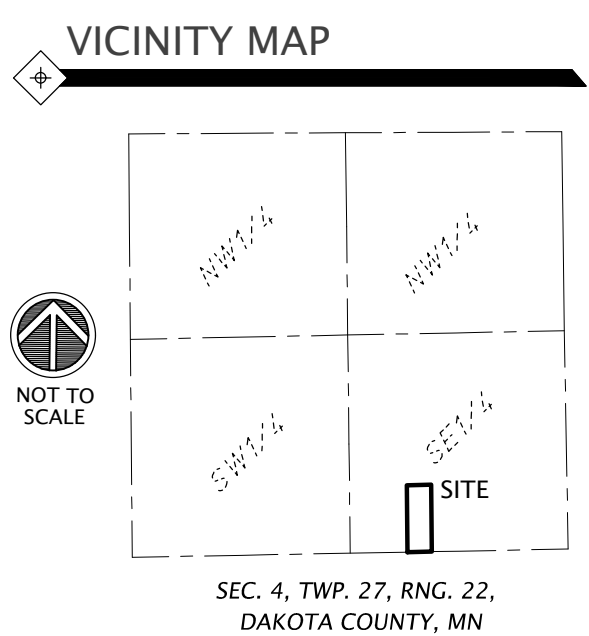
DEPARTMENT OF PROPERTY TAXATION AND RECORDS, DAKOTA COUNTY MINNESOTA  
Pursuant to Minnesota Statutes, Section 505.021, Subd. 9, taxes payable in the year 20\_\_\_\_ on the land hereinbefore described have been paid. Also pursuant to Minnesota Statutes, Section 272.12, there are no delinquent taxes and transfer entered this \_\_\_\_\_ day of \_\_\_\_\_, 20\_\_\_\_.

By: \_\_\_\_\_, Amy A. Koethe, Director  
Department of Property Taxation and Records

COUNTY RECORDER, COUNTY OF DAKOTA COUNTY, STATE OF MINNESOTA  
I hereby certify that this plat EAGLES LANDING was filed in the office of the County Recorder for public record on this \_\_\_\_\_ day of \_\_\_\_\_, 20\_\_\_\_, at \_\_\_\_\_ o'clock \_\_\_\_\_ .M. and was duly filed in Book \_\_\_\_\_ of Plats, Page \_\_\_\_\_ as Document No. \_\_\_\_\_.

By: \_\_\_\_\_, Amy A. Koethe, County Recorder

- LEGEND
- Denotes found 1/2 inch iron pipe with no cap unless otherwise noted.
  - Denotes 1/2 inch x 14 inch iron pipe set and marked with Minnesota License No. 25718 (monuments to be set within one year after recording of the plat)
  - △ Denotes restricted access to Dakota County per the Dakota County Contiguous plat Ordinance.



For the purposes of this survey the south line of the SW 1/4 of the SE 1/4 of Section 4, T27, R22 Dakota County, Minnesota is assumed to bear N88°54'45"E.

