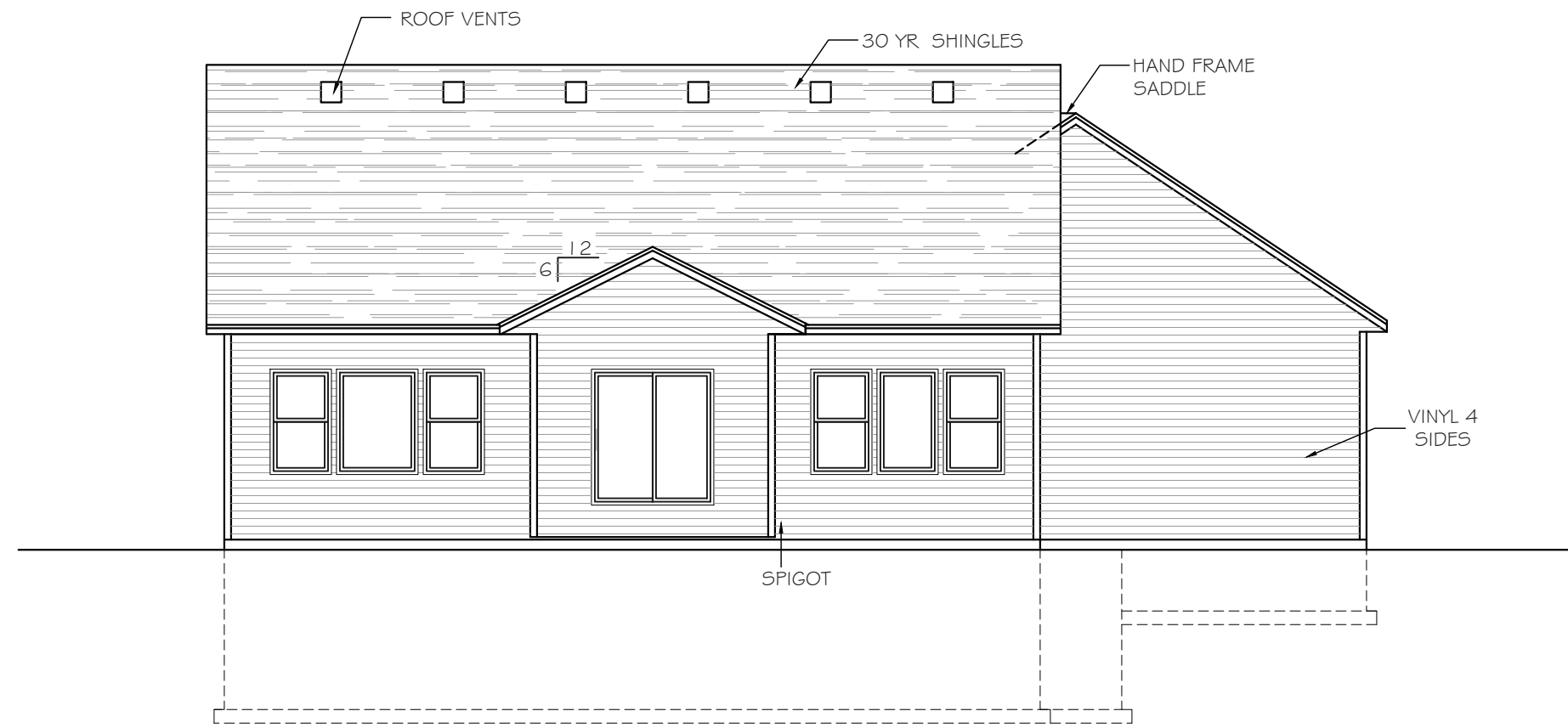
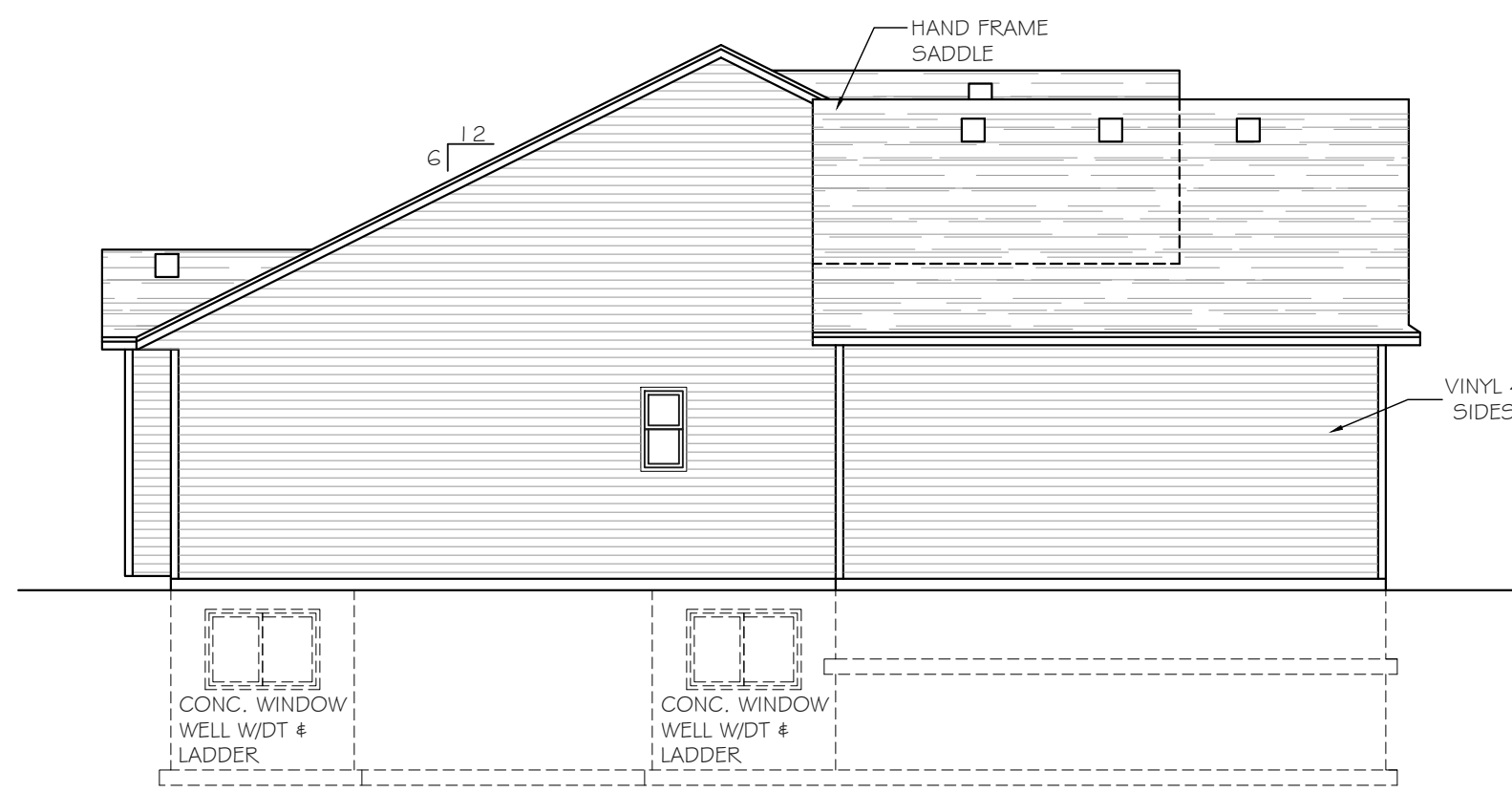


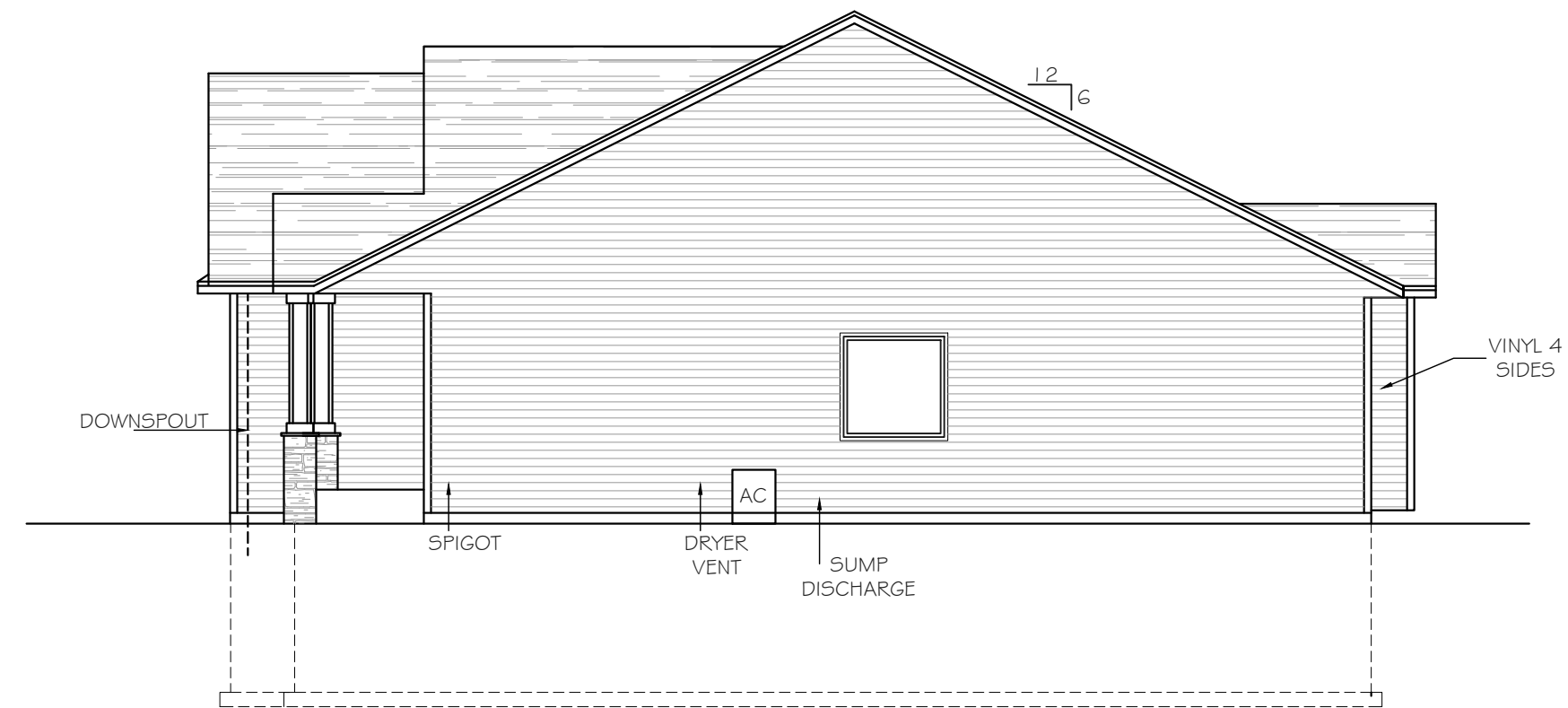
Intellectual property of Fieldstone Family Homes, Inc. © 2008. ALL RIGHTS RESERVED. These plan drawings, including but not limited to, all text, designs, renditions, floor plans, along with the selection and arrangement of thereof, are original copyrighted materials owned by Fieldstone Family Homes, Inc. These materials are protected by federal law against unauthorized copying, or reproduction by unauthorized persons and entities.  
 MN LIC: BCG31164  
 WI LIC: DC-070800080



REAR ELEVATION  
 SCALE: 1/8" = 1'-0"



LEFT ELEVATION  
 SCALE: 1/8" = 1'-0"



RIGHT ELEVATION  
 SCALE: 1/8" = 1'-0"



FRONT ELEVATION  
 SCALE: 1/8" = 1'-0"

CLIENT:  
 Project:

LOCATION:  
 LOT \_ BLK\_ DEVELOPMENT

Street  
 CITY  
 MN ZIP  
 JOB #:

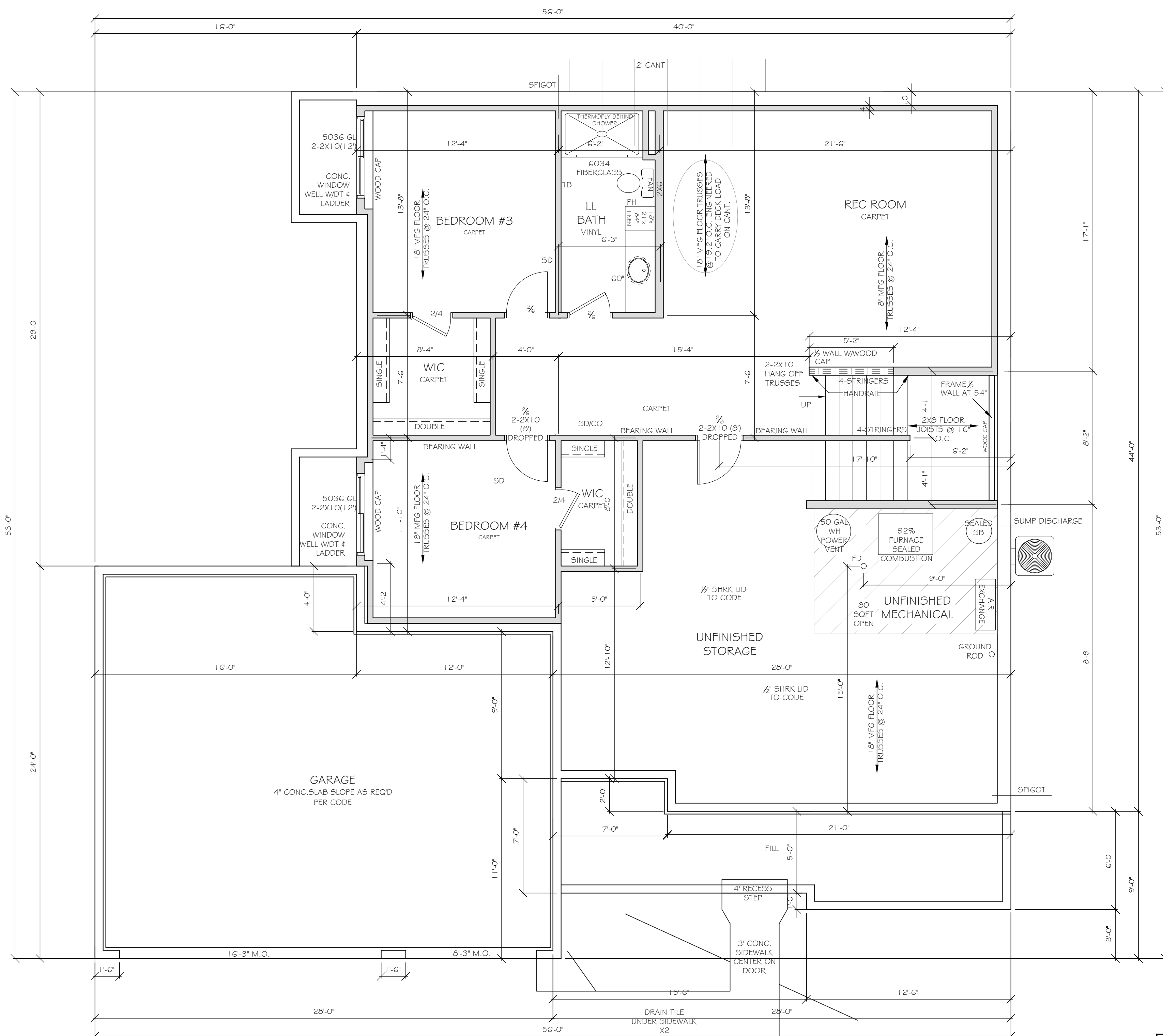
REVISION 1	
REVISION 2	
REVISION 3	
REVISION 4	
REVISION 5	
REVISION 6	
REVISION 7	
REVISION 8	
REVISION 9	
REVISION 10	
REVISION 11	
FINAL	2.28.23

All changes after above date will be done according to F.F.H. Change Order Policy

Homeowner Signature

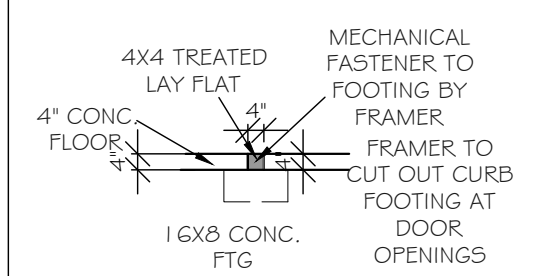
Agent:  
 Plan: Canton II  
 Total Foundation: 2406  
 House Foundation: 1614  
 Finished: 2705  
 Unfinished: 661

Scale: 1/4" = 1'-0"  
 Fin Sq Ft: 2705



Intellectual property of Fieldstone Family Homes, Inc. © 2008. ALL RIGHTS RESERVED. These plan drawings, including but not limited to, all text, designs, renditions, floor plans, along with the selection and arrangement of thereof, are original copyrighted materials owned by Fieldstone Family Homes, Inc. These materials are protected by federal law against unauthorized copying, or reproduction by unauthorized persons and entities.  
 MN LIC: BC631164  
 WI LIC: DC-070800080

CLIENT:  
 Project:  
 LOCATION:  
 LOT \_ BLK\_ DEVELOPMENT  
 Street  
 CITY MN ZIP  
 JOB #:



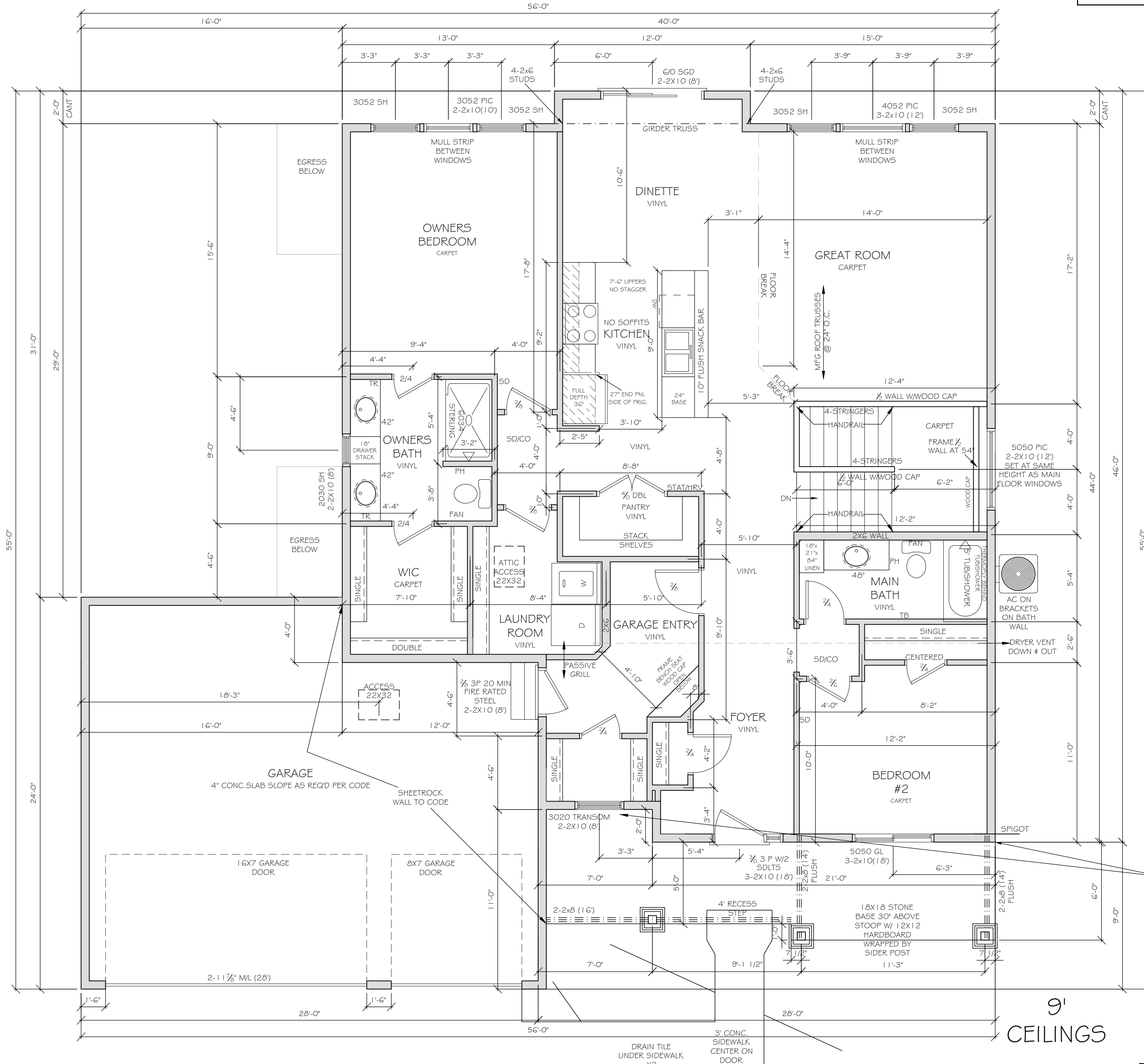
FRAMER NOTE:  
 INTERIOR CURB DETAIL FOR 2X4 BEARING WALL

REVISION 1	
REVISION 2	
REVISION 3	
REVISION 4	
REVISION 5	
REVISION 6	
REVISION 7	
REVISION 8	
REVISION 9	
REVISION 10	
REVISION 11	
FINAL	2.28.23

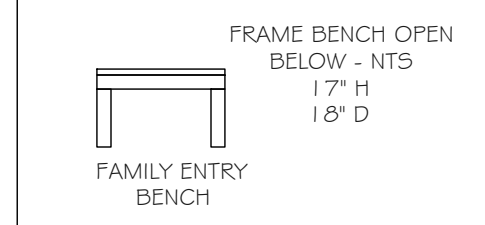
All changes after above date will be done according to F.F.H. Change Order Policy

Homeowner Signature  
 Agent:  
 Plan: Canton II  
 Total Foundation: 2406  
 House Foundation: 1614  
 Finished: 2705  
 Unfinished: 661

Scale: 1/4" = 1'-0"  
 Fin Sq Ft: 1067



HIGH DENSITY OSB  
SUB FLOOR  
ALL MAIN  
FLOOR



USE HOUSE WALL  
AS BEARING FOR  
ROOF TRUSSES -  
EXTEND HEELS

Intellectual property of Fieldstone Family Homes, Inc. © 2008. ALL RIGHTS RESERVED. These plan drawings, including but not limited to, all text, designs, renditions, floor plans, along with the selection and arrangement of thereof, are original copyrighted materials owned by Fieldstone Family Homes, Inc. These materials are protected by federal law against unauthorized copying, or reproduction by unauthorized persons and entities.  
MN LIC: BC631164  
WI LIC: DC-070800080

CLIENT:  
Project:

LOCATION:  
LOT \_ BLK\_ DEVELOPMENT

Street  
CITY  
MN ZIP  
JOB #:

REVISION 1	
REVISION 2	
REVISION 3	
REVISION 4	
REVISION 5	
REVISION 6	
REVISION 7	
REVISION 8	
REVISION 9	
REVISION 10	
REVISION 11	
FINAL	2.28.23

All changes after above date will be done according to F.F.H. Change Order Policy

Homeowner Signature

Agent:  
Plan: Canton II  
Total Foundation: 2406  
House Foundation: 1614  
Finished: 2705  
Unfinished: 661

Scale: 1/4" = 1'-0"

Fin Sq Ft: 1638