

Intellectual property of Fieldstone Family Homes, Inc. © 2008. ALL RIGHTS RESERVED. These plan drawings, including but not limited to, all text, designs, renditions, floor plans, along with the selection and arrangement of thereof, are original copyrighted materials owned by Fieldstone Family Homes, Inc. These materials are protected by federal law against unauthorized copying, or reproduction by unauthorized persons and entities.

MN LIC: BC631164  
WI LIC: DC-070800080

CLIENT:  
Project:

LOCATION:  
LOT \_BLK\_ DEVELOPMENT

Street  
CITY  
MN ZIP  
JOB #:

REVISION 1	
REVISION 2	
REVISION 3	
REVISION 4	
REVISION 5	
REVISION 6	
REVISION 7	
REVISION 8	
REVISION 9	
REVISION 10	
REVISION 11	
FINAL	2.28.23

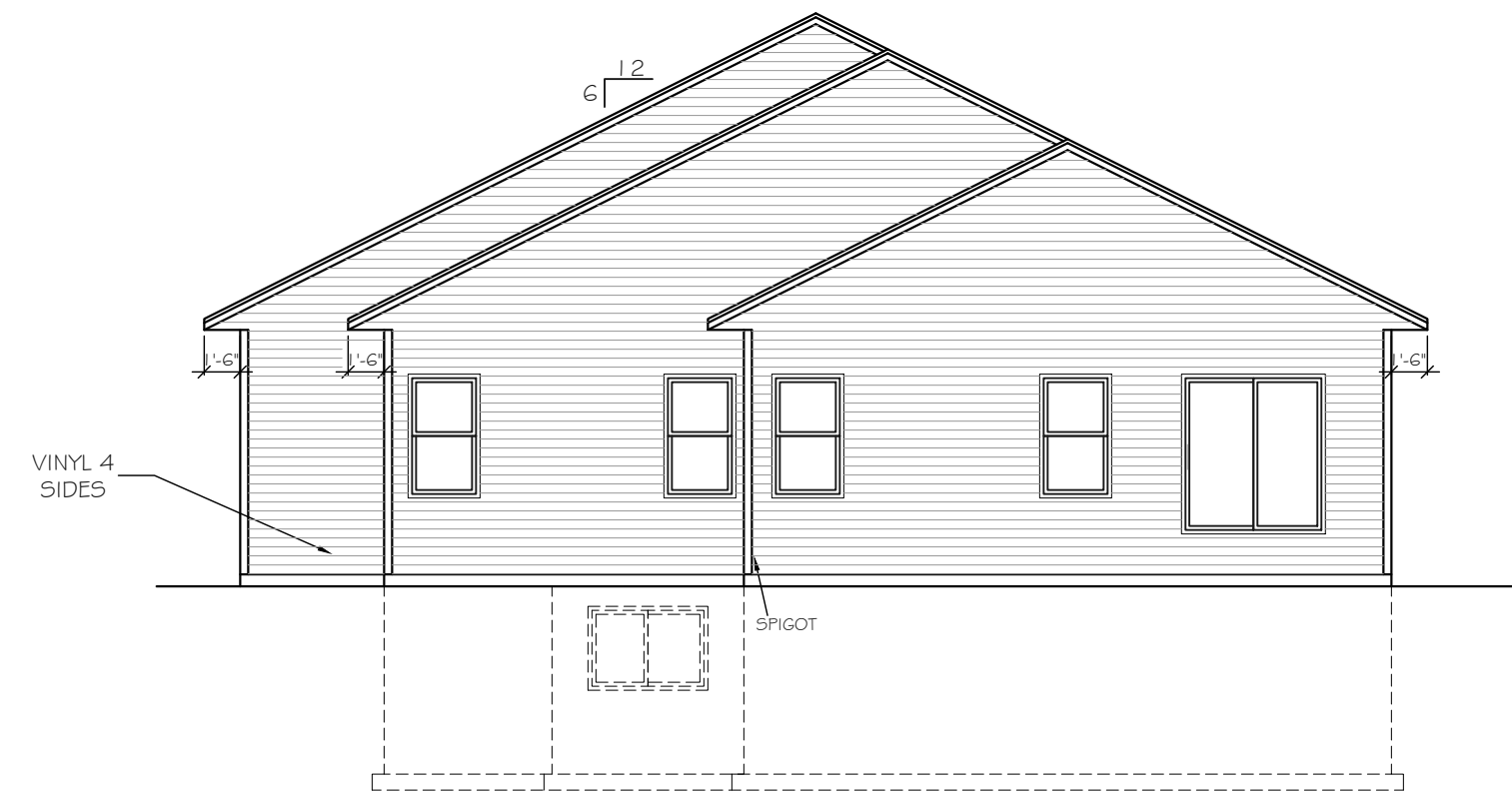
All changes after above date will be done according to F.F.H. Change Order Policy

Homeowner Signature

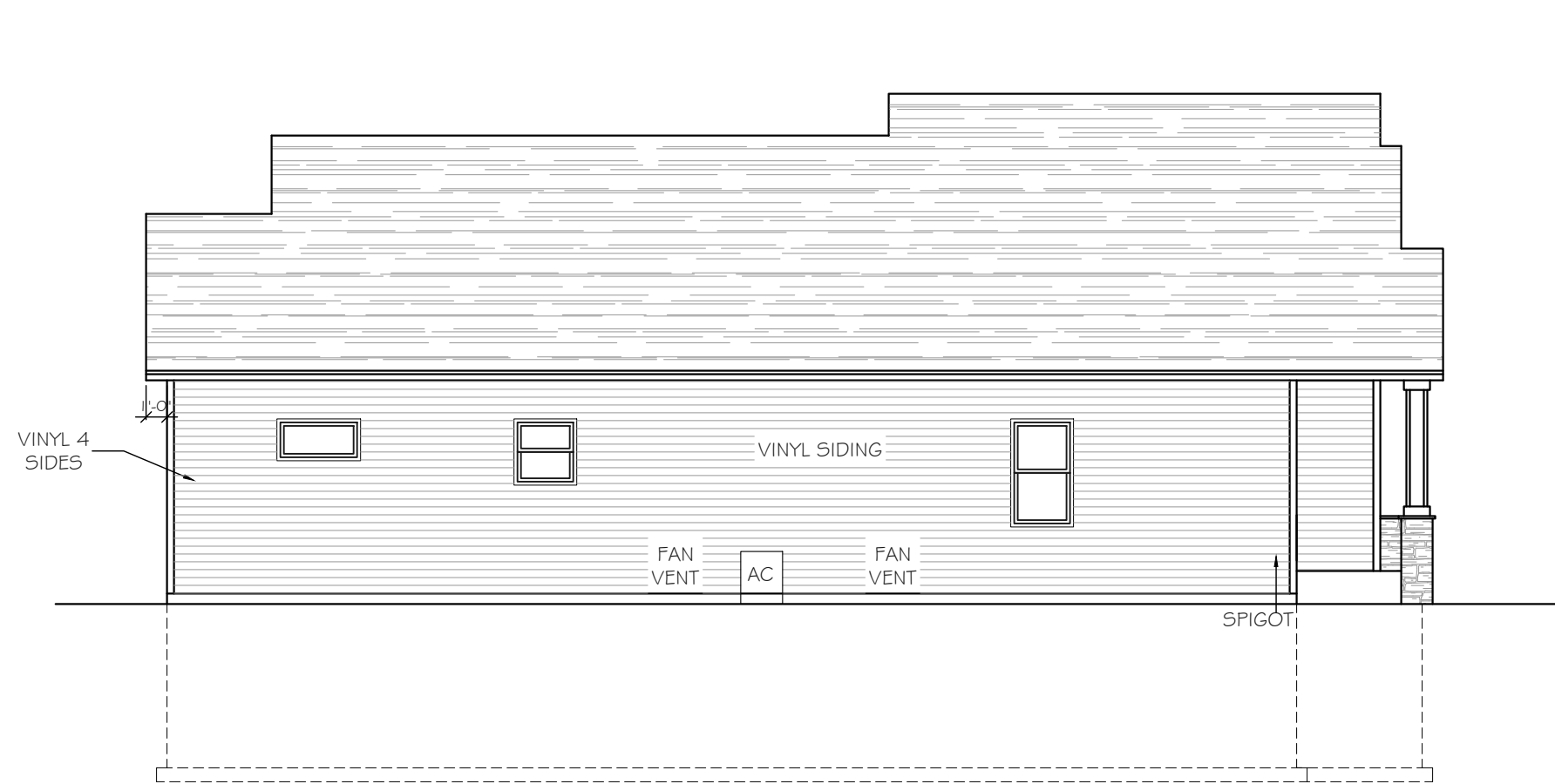
Agent:  
Plan: St. Croix  
Total Foundation: 2559  
House Foundation: 1758  
Finished: 2799  
Unfinished: 717

Scale: 1/4" = 1'-0"

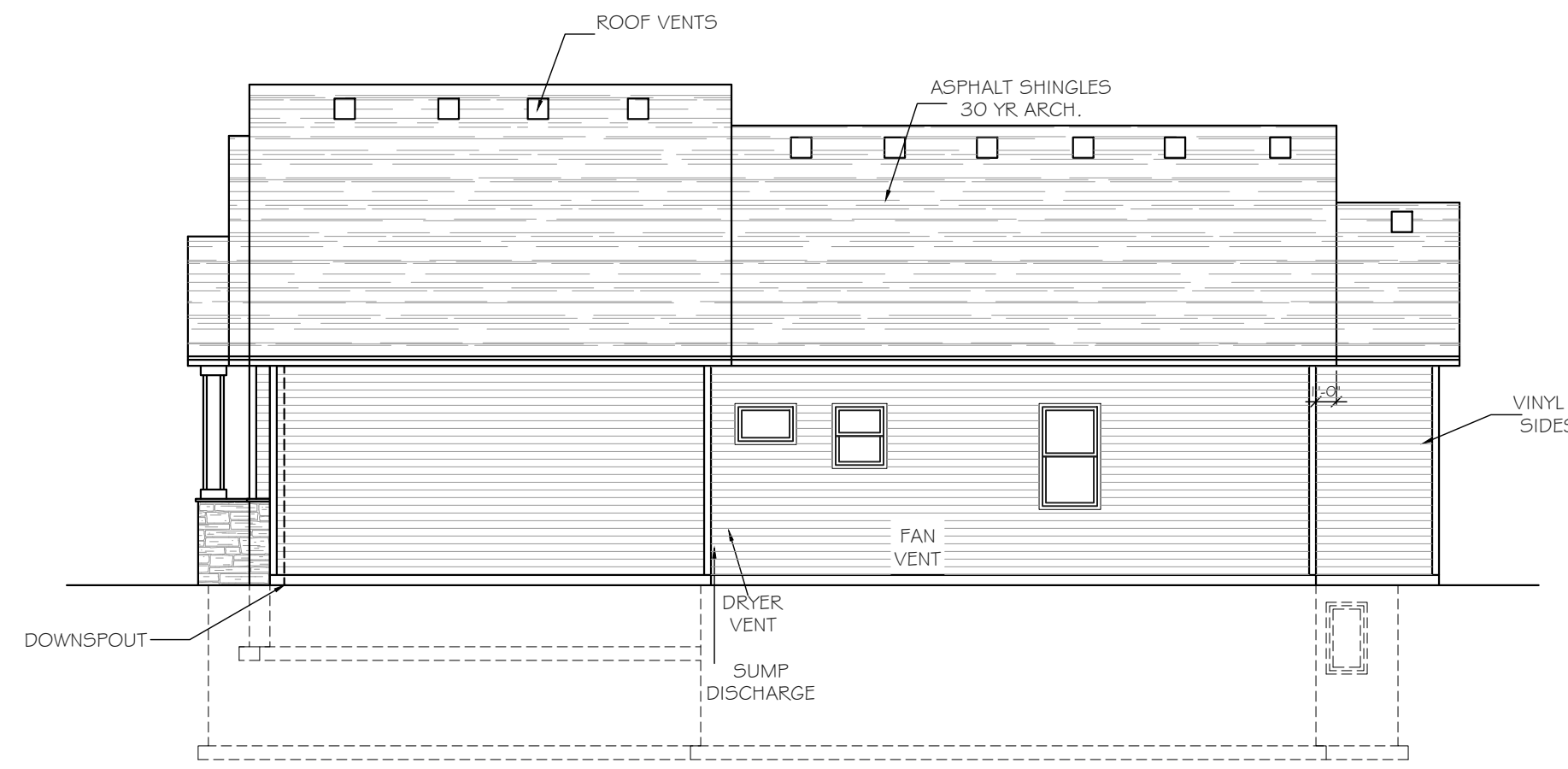
Fin Sq Ft: 2799



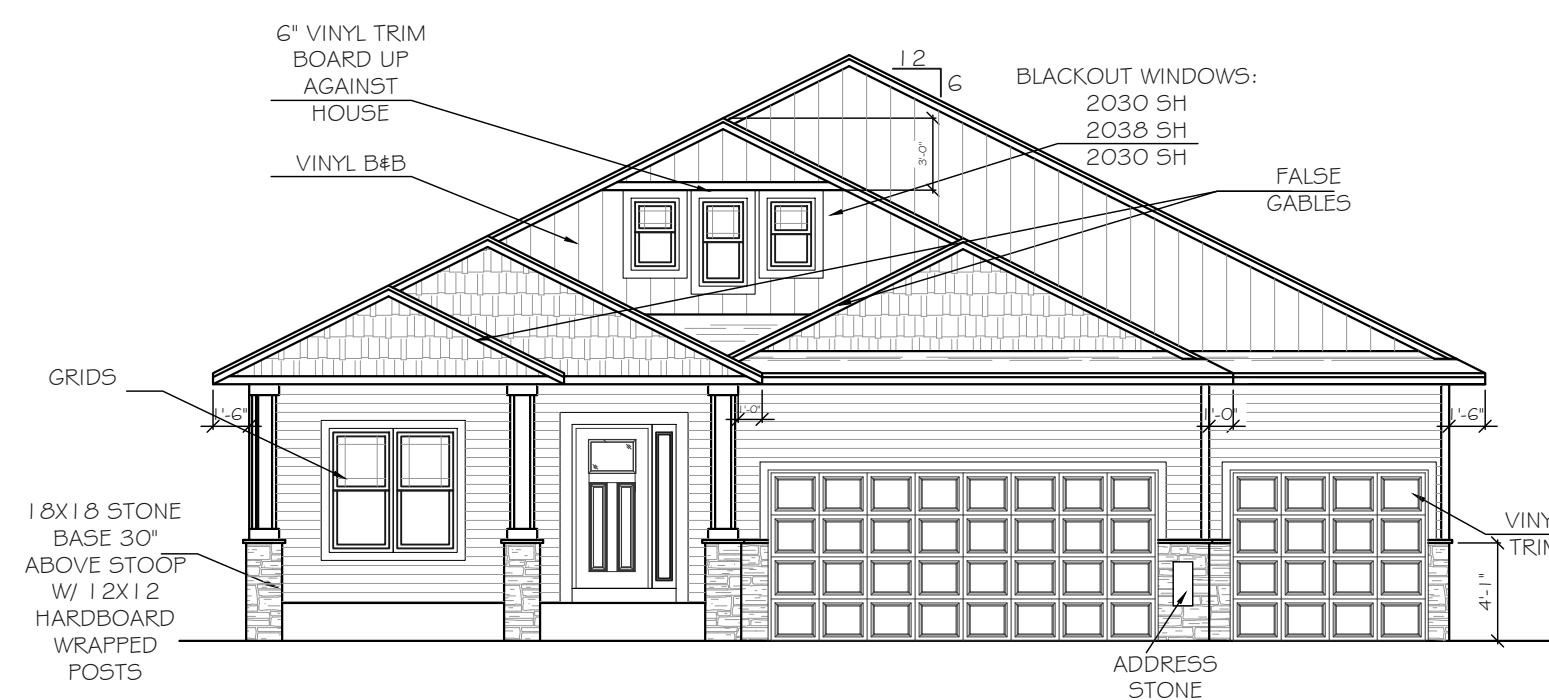
REAR ELEVATION  
SCALE: 1/8" = 1'-0"



LEFT ELEVATION  
SCALE: 1/8" = 1'-0"



RIGHT ELEVATION  
SCALE: 1/8" = 1'-0"



FRONT ELEVATION  
SCALE: 1/8" = 1'-0"

Intellectual property of Fieldstone Family Homes, Inc. © 2008. ALL RIGHTS RESERVED. These plan drawings, including but not limited to, all text, designs, renditions, floor plans, along with the selection and arrangement of thereof, are original copyrighted materials owned by Fieldstone Family Homes, Inc. These materials are protected by federal law against unauthorized copying, or reproduction by unauthorized persons and entities.

MN LIC: BC631164  
WI LIC: DC-070800080

CLIENT:  
Project:

LOCATION:  
LOT\_BLK\_DEVELOPMENT

Street  
CITY  
MN ZIP  
JOB #:

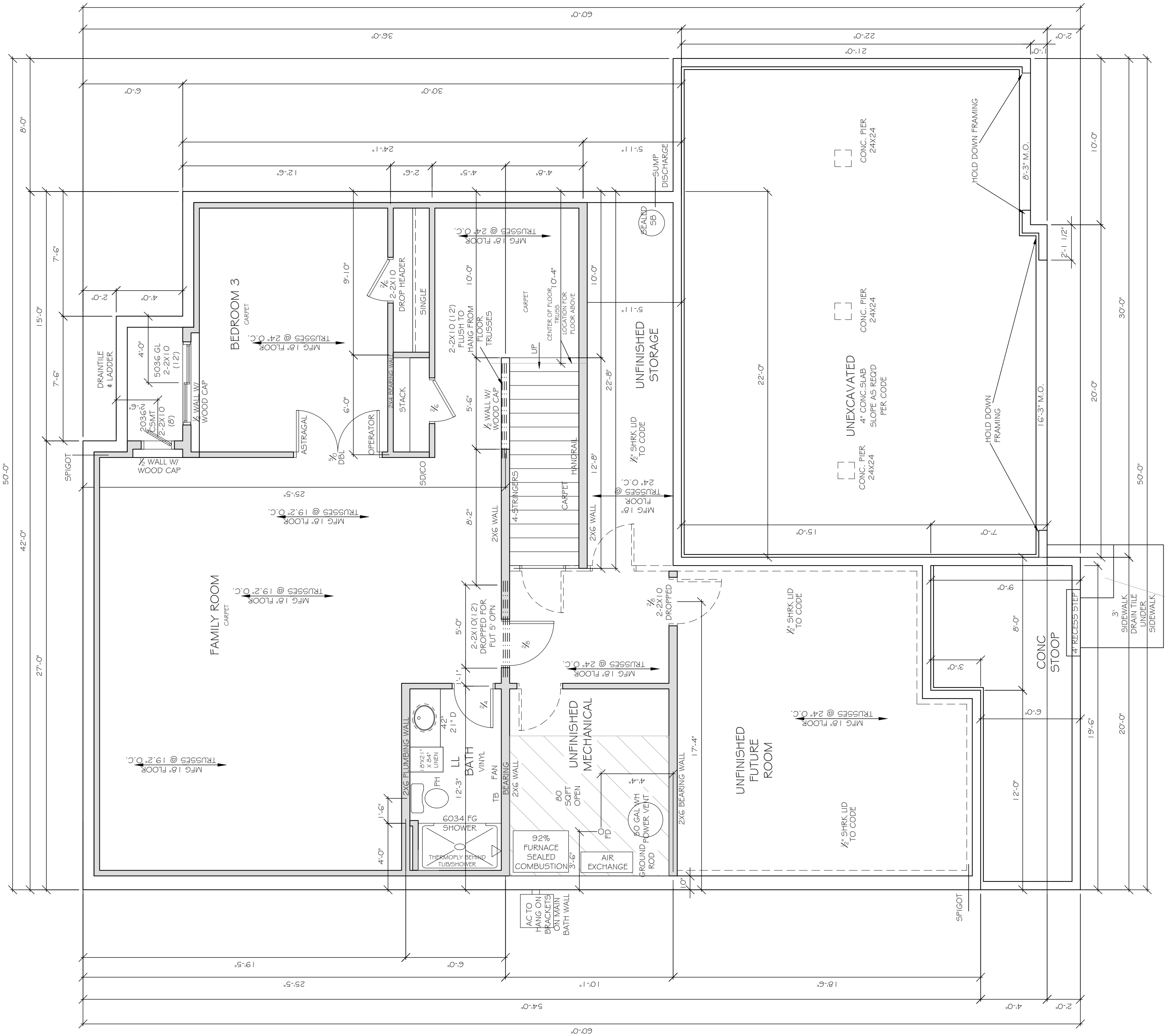
REVISION 1	
REVISION 2	
REVISION 3	
REVISION 4	
REVISION 5	
REVISION 6	
REVISION 7	
REVISION 8	
REVISION 9	
REVISION 10	
REVISION 11	
FINAL	2.28.23

All changes after above date will be done according to F.F.H. Change Order Policy

Homeowner Signature

Agent:  
Plan: St. Croix  
Total Foundation: 2559  
House Foundation: 1758  
Finished: 2799  
Unfinished: 717

Scale: 1/4" = 1'-0"  
Fin Sq Ft: 1041



**FRAMER NOTE: INTERIOR CURB DETAIL FOR 2X6 BEARING WALL**

MECHANICAL FASTENER TO FOOTING BY FRAMER  
FRAMER TO CUT OUT CURB FOOTING AT DOOR OPENINGS

4X6 TREATED LAY FLAT  
4" CONC FLOOR  
16X8 CONC. FIG

Intellectual property of Fieldstone Family Homes, Inc. © 2008. ALL RIGHTS RESERVED. These plan drawings, including but not limited to, all text, designs, renditions, floor plans, along with the selection and arrangement of thereof, are original copyrighted materials owned by Fieldstone Family Homes, Inc. These materials are protected by federal law against unauthorized copying, or reproduction by unauthorized persons and entities.

MN LIC: BC631164  
WI LIC: DC-070800080

CLIENT:  
Project:

LOCATION:  
LOT \_BLK\_ DEVELOPMENT

Street  
CITY MN ZIP  
JOB #:

REVISION 1	
REVISION 2	
REVISION 3	
REVISION 4	
REVISION 5	
REVISION 6	
REVISION 7	
REVISION 8	
REVISION 9	
REVISION 10	
REVISION 11	
FINAL	2.28.23

All changes after above date will be done according to F.F.H. Change Order Policy

Homeowner Signature

Agent:  
Plan: St. Croix  
Total Foundation: 2559  
House Foundation: 1758  
Finished: 2799  
Unfinished: 717

Scale: 1/4" = 1'-0"  
Fin Sq Ft: 1758

