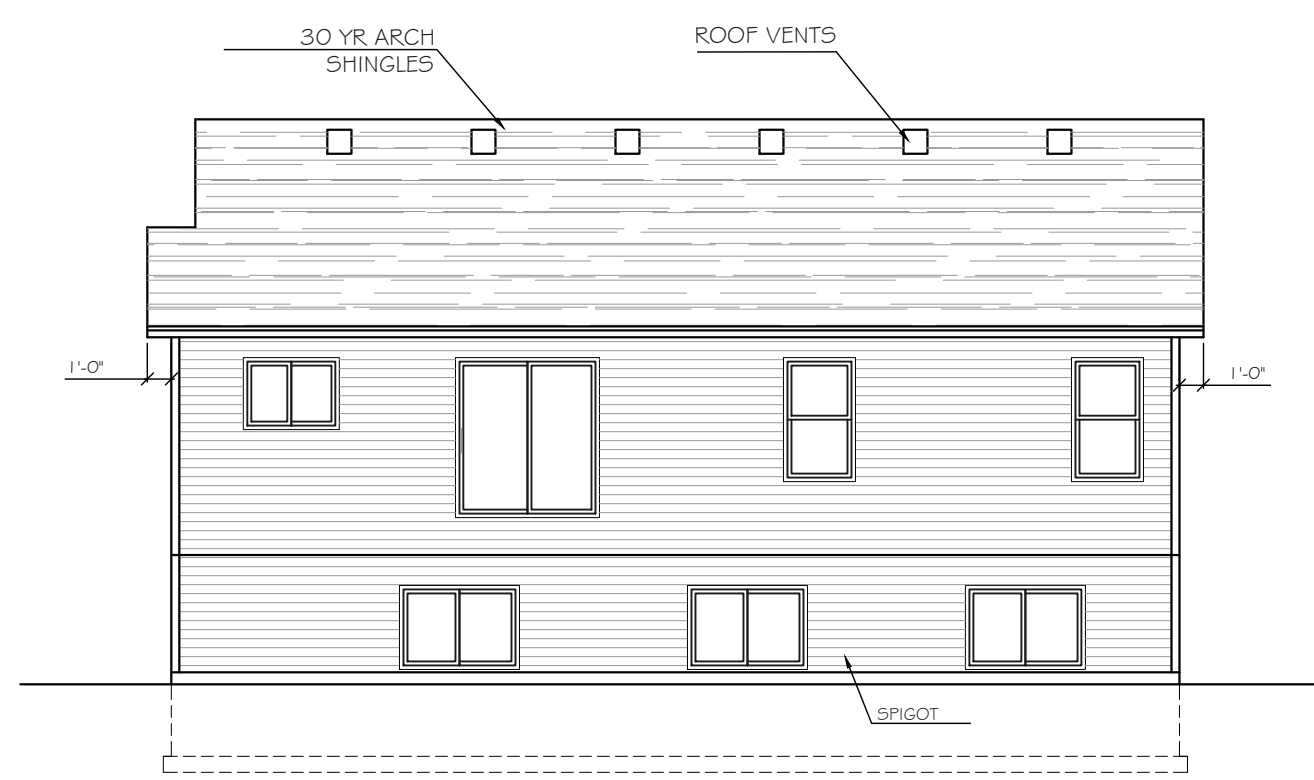


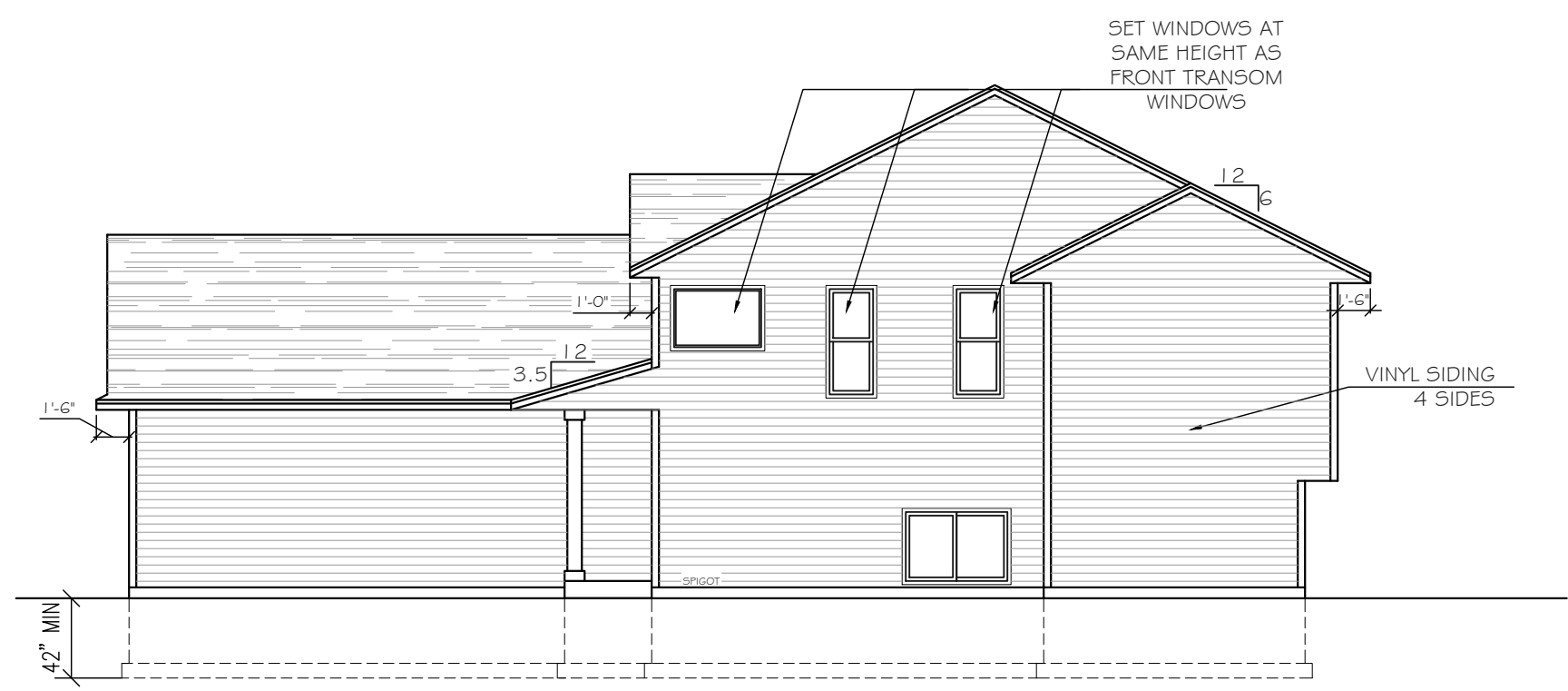
Intellectual property of Fieldstone Family Homes, Inc. © 2008. ALL RIGHTS RESERVED. These plan drawings, including but not limited to, all text, designs, renditions, floor plans, along with the selection and arrangement of thereof, are original copyrighted materials owned by Fieldstone Family Homes, Inc. These materials are protected by federal law against unauthorized copying, or reproduction by unauthorized persons and entities.
 MN LIC: BC631164
 WI LIC: DC-070800080



REAR ELEVATION
 $\frac{1}{8}'' = 1'-0''$



LEFT ELEVATION
 $\frac{1}{8}'' = 1'-0''$



RIGHT ELEVATION
 $\frac{1}{8}'' = 1'-0''$



FRONT ELEVATION
 $\frac{1}{8}'' = 1'-0''$

CLIENT:
 Project:

LOCATION:
 LOT _ BLK_ DEVELOPMENT
 Street
 CITY
 MN ZIP
 JOB #:

REVISION 1	
REVISION 2	
REVISION 3	
REVISION 4	
REVISION 5	
REVISION 6	
REVISION 7	
REVISION 8	
REVISION 9	
REVISION 10	
REVISION 11	
FINAL	2.28.23

All changes after above date will be done according to F.F.H. Change Order Policy

Homeowner Signature

Agent:
 Plan: PARKDALE
 Total Foundation: 1822
 House Foundation: 1224
 Finished: 2223
 Unfinished: 288

Scale: 1/8" = 1'-0"

Fin Sq Ft: 2223

Intellectual property of Fieldstone Family Homes, Inc. © 2008. ALL RIGHTS RESERVED. These plan drawings, including but not limited to, all text, designs, renditions, floor plans, along with the selection and arrangement of thereof, are original copyrighted materials owned by Fieldstone Family Homes, Inc. These materials are protected by federal law against unauthorized copying, or reproduction by unauthorized persons and entities.

MN LIC: BC631164
WI LIC: DC-070800080

CLIENT:
Project:

LOCATION:
LOT _ BLK _
DEVELOPMENT

Street
CITY
MN ZIP
JOB #:

REVISION 1	
REVISION 2	
REVISION 3	
REVISION 4	
REVISION 5	
REVISION 6	
REVISION 7	
REVISION 8	
REVISION 9	
REVISION 10	
REVISION 11	
FINAL	2.28.23

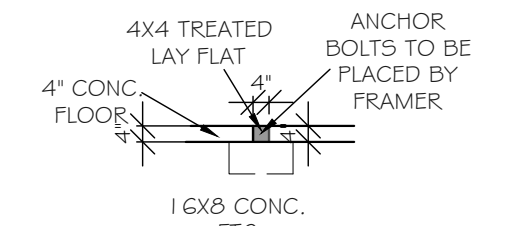
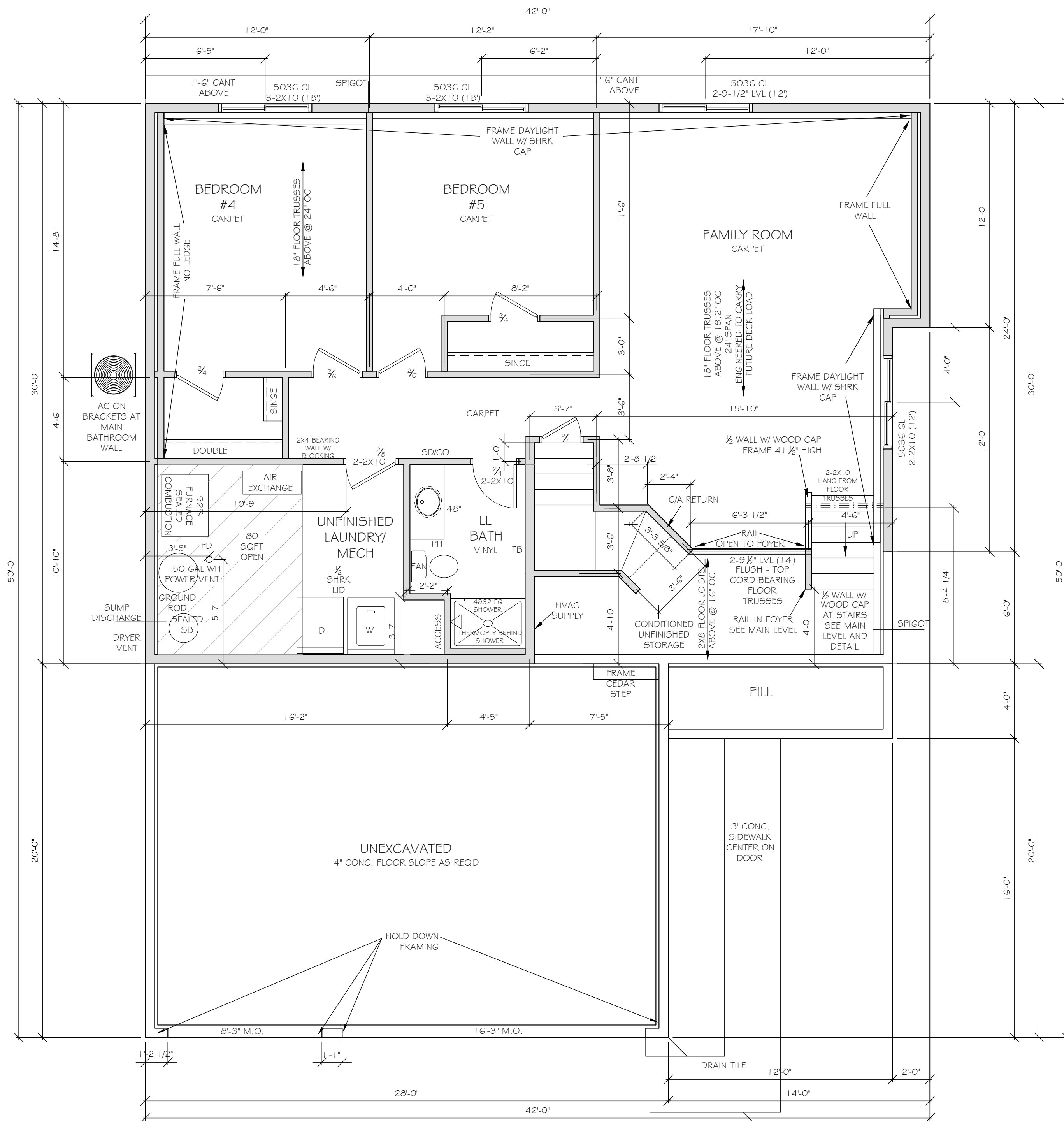
All changes after above date will be done according to F.F.H. Change Order Policy

Homeowner
Signature

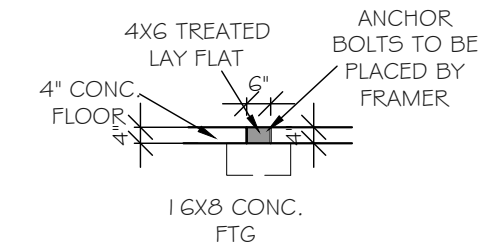
Agent:
Plan: PARKDALE
Total Foundation: 1822
House Foundation: 1224
Finished: 2223
Unfinished: 288

Scale: 1/4" = 1'-0"

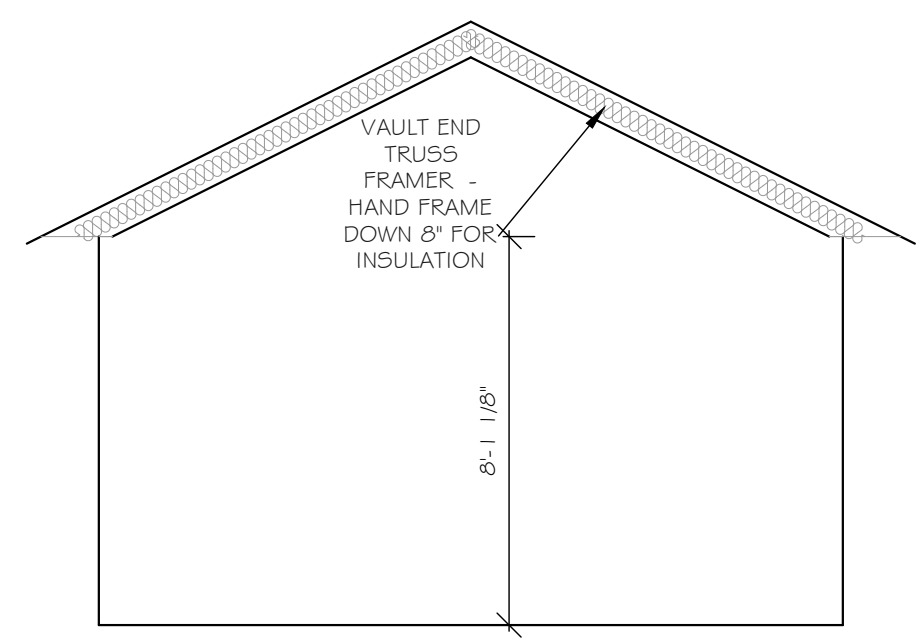
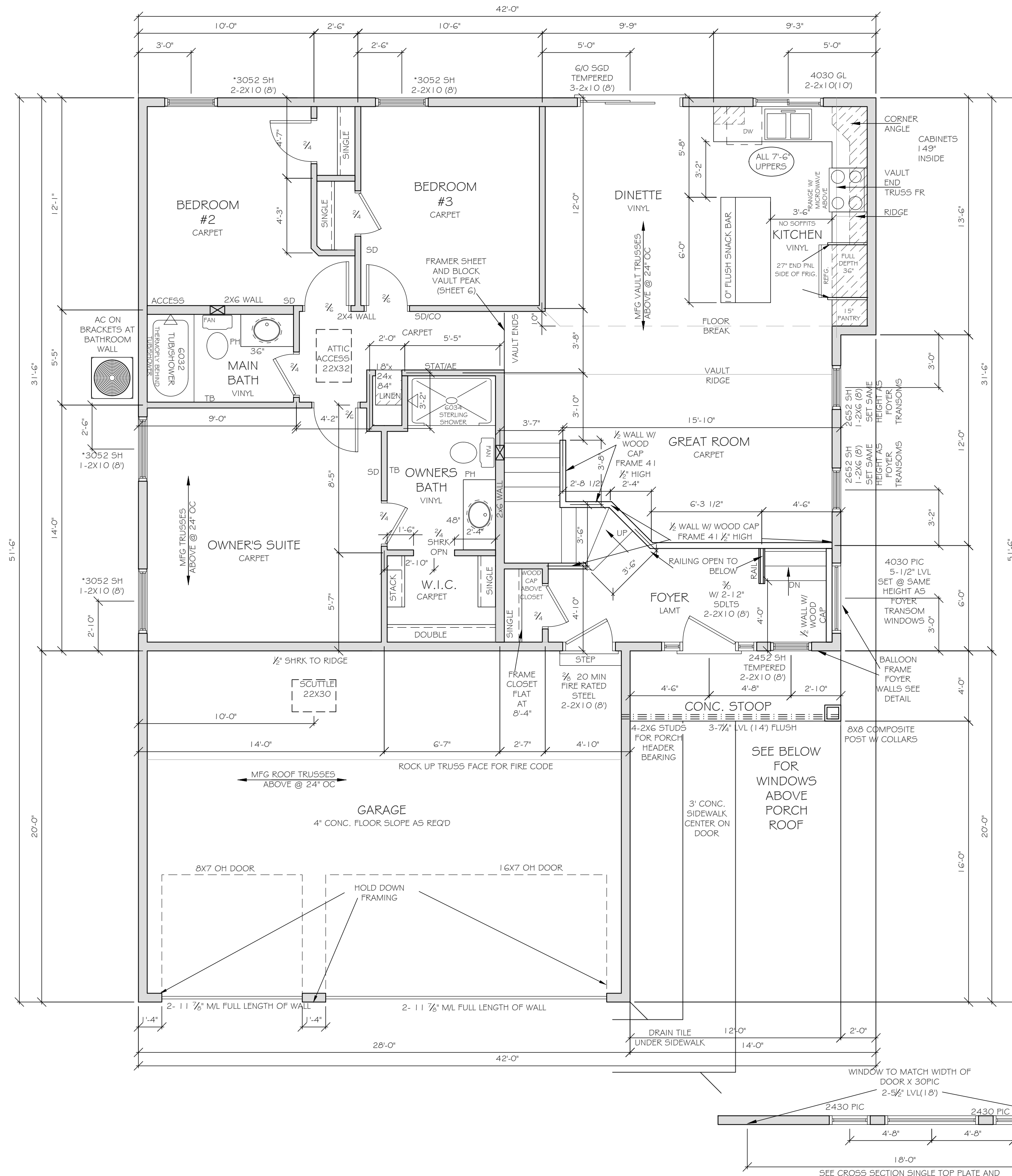
Fin Sq Ft: 936



FRAMER NOTE:
INTERIOR
CURB DETAIL FOR 2X4
BEARING WALL



FRAMER NOTE:
INTERIOR
CURB DETAIL FOR 2X6
BEARING WALL



KITCHEN BUMP-OUT VAULT

FRAMER NOTE:
TOP OF WDS IN GREAT ROOM SET UP SAME HEIGHT AS FOYER

Intellectual property of Fieldstone Family Homes, Inc. © 2008. ALL RIGHTS RESERVED. These plan drawings, including but not limited to, all text, designs, renditions, floor plans, along with the selection and arrangement of thereof, are original copyrighted materials owned by Fieldstone Family Homes, Inc. These materials are protected by federal law against unauthorized copying, or reproduction by unauthorized persons and entities.
MN LIC: BC631164
WI LIC: DC-070800080

CLIENT:
Project:

LOCATION:
LOT_BLK_DEVELOPMENT

Street
CITY MN ZIP
JOB #:

REVISION 1	
REVISION 2	
REVISION 3	
REVISION 4	
REVISION 5	
REVISION 6	
REVISION 7	
REVISION 8	
REVISION 9	
REVISION 10	
REVISION 11	
FINAL	2.28.23

All changes after above date will be done according to F.F.H. Change Order Policy

Homeowner Signature

Agent:
Plan: PARKDALE
Total Foundation: 1822
House Foundation: 1224
Finished: 2223
Unfinished: 288

Scale: 1/4" = 1'-0"

Fin Sq Ft: 1287