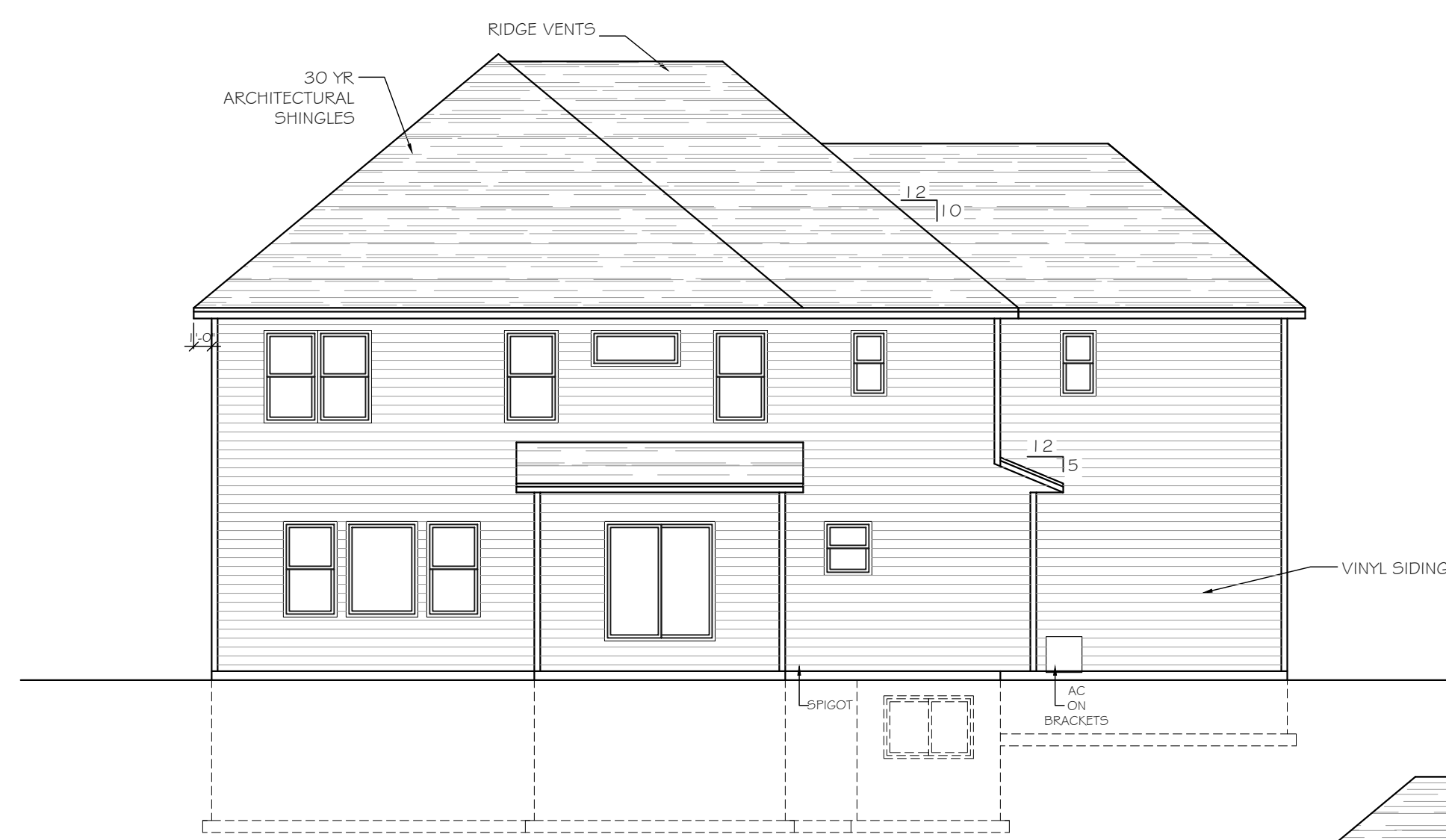
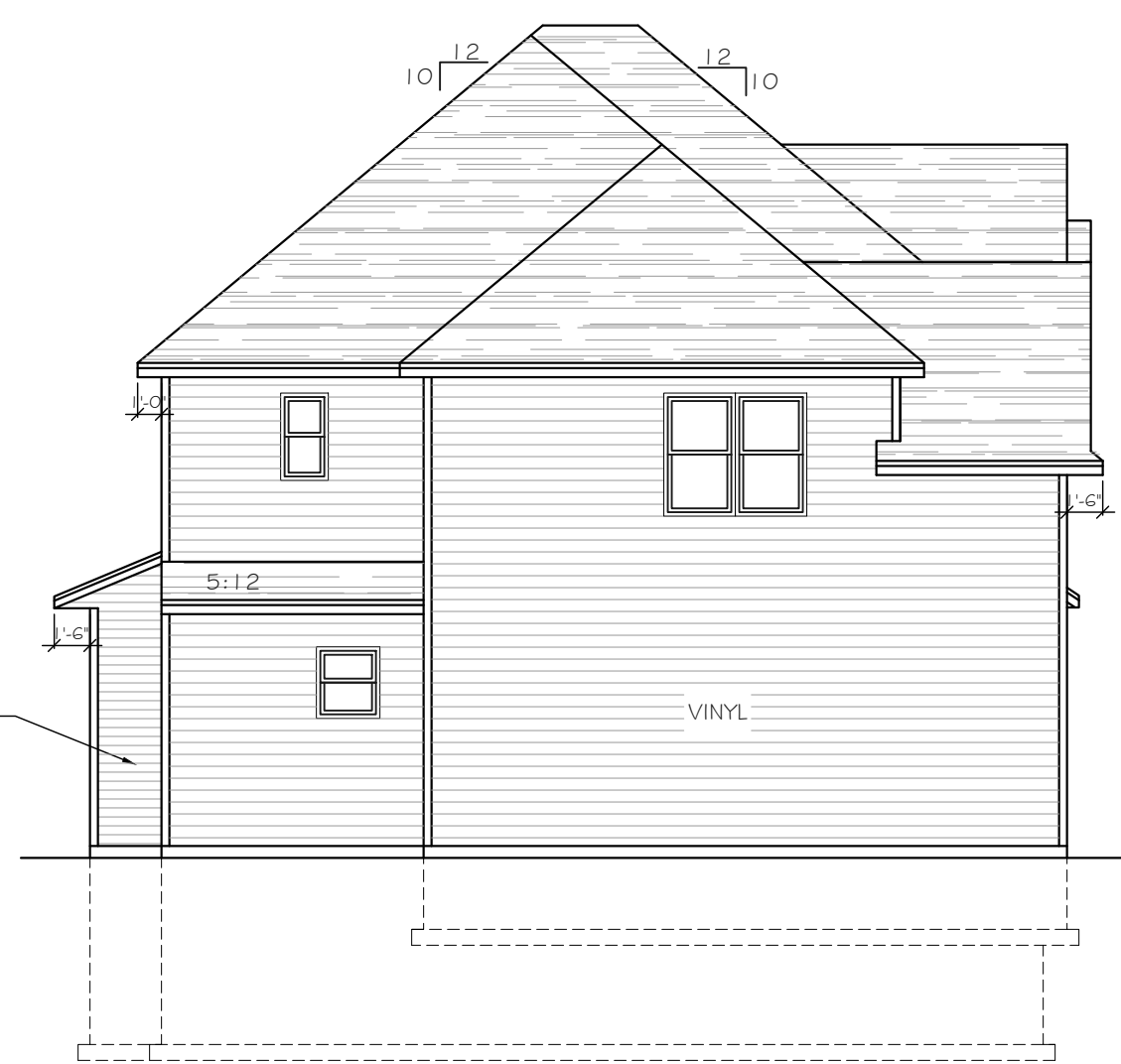


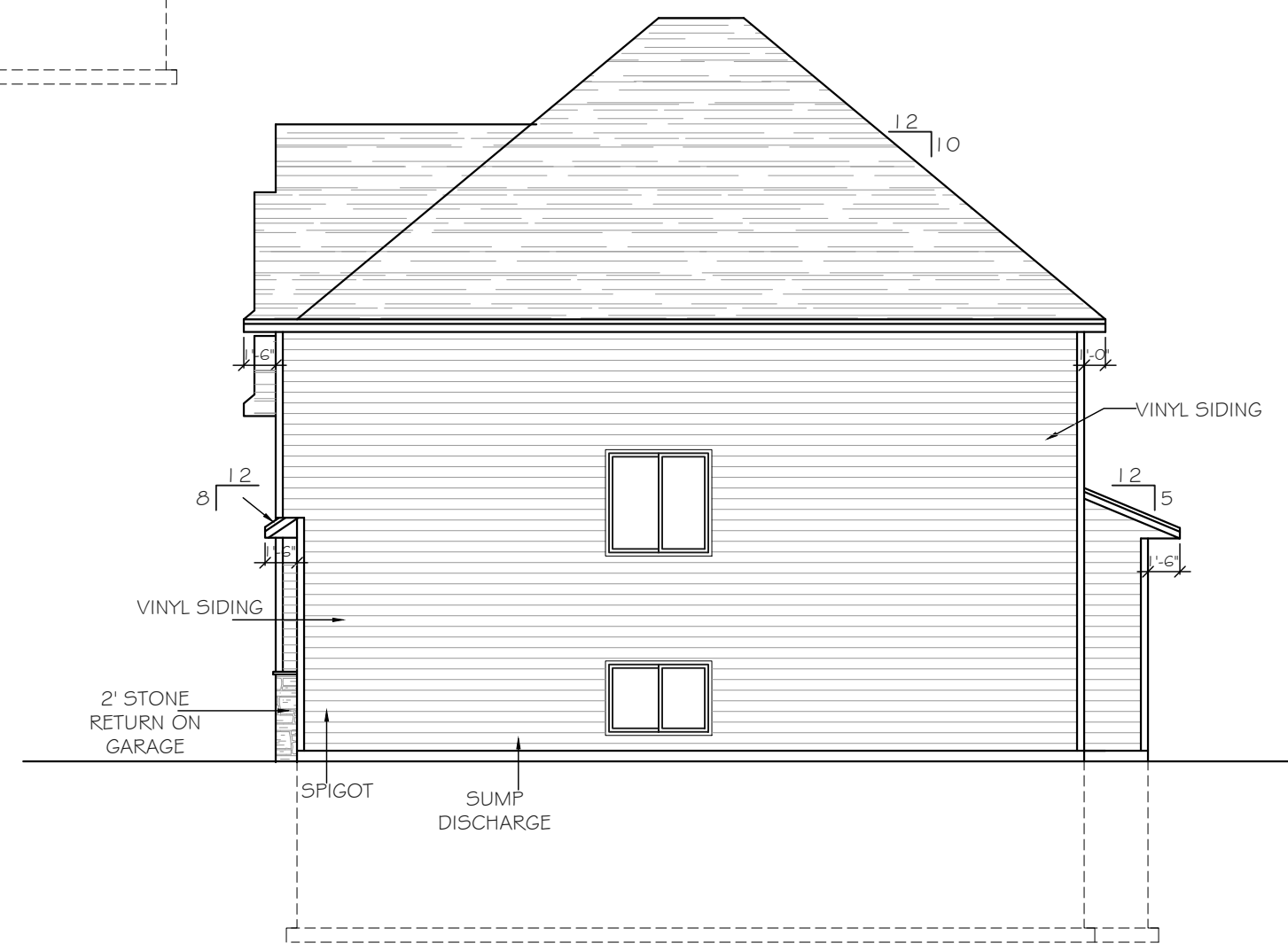
Intellectual property of Fieldstone Family Homes, Inc. © 2008. ALL RIGHTS RESERVED. These plan drawings, including but not limited to, all text, designs, renditions, floor plans, along with the selection and arrangement of thereof, are original copyrighted materials owned by Fieldstone Family Homes, Inc. These materials are protected by federal law against unauthorized copying, or reproduction by unauthorized persons and entities.
 MN LIC: BCG31164
 WI LIC: DC-070800080



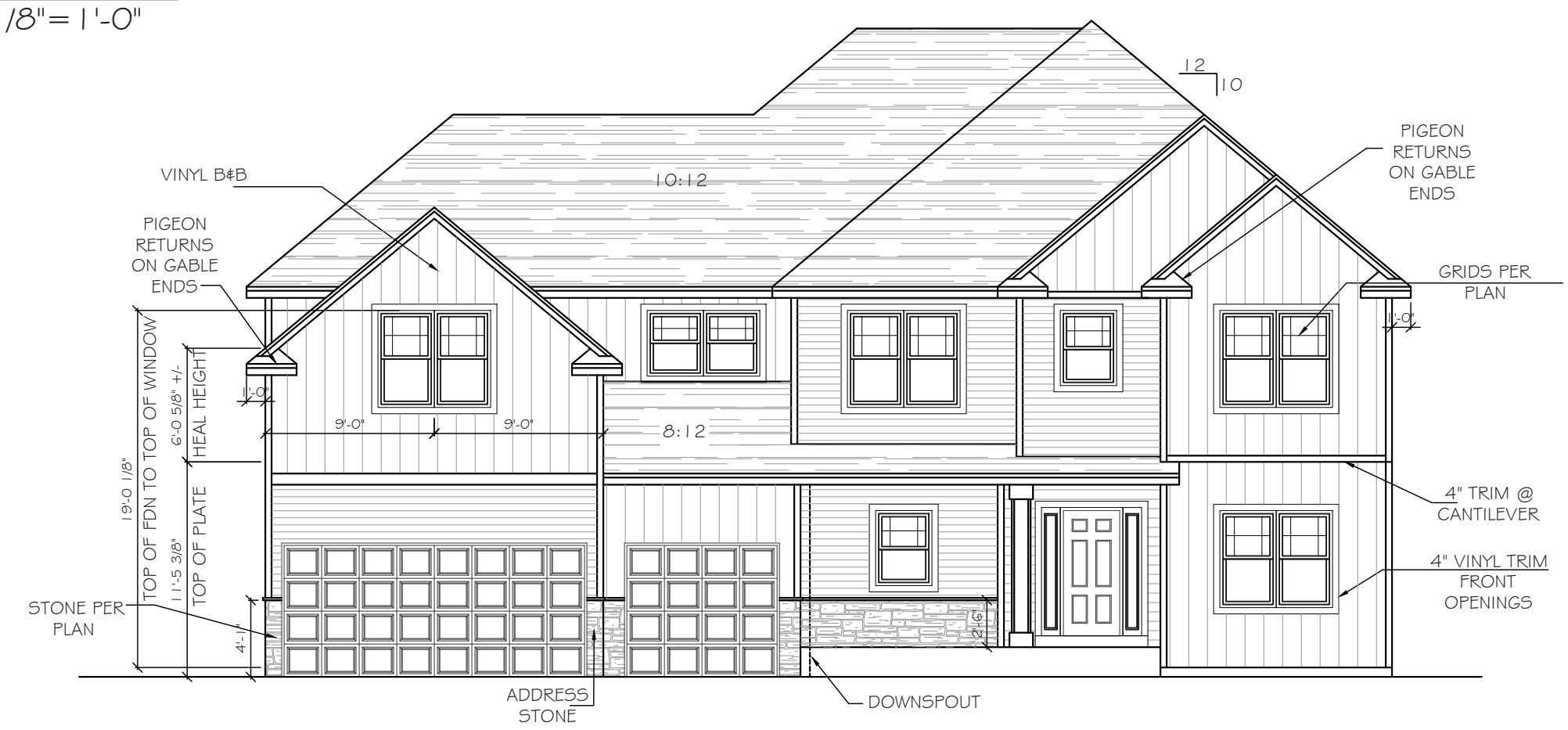
REAR ELEVATION
 SCALE: 1/8" = 1'-0"



LEFT ELEVATION
 SCALE: 1/8" = 1'-0"



RIGHT ELEVATION
 SCALE: 1/8" = 1'-0"



FRONT ELEVATION
 SCALE: 1/8" = 1'-0"

CLIENT:
 Project:

LOCATION:
 LOT _ BLK_ DEVELOPMENT
 Street
 CITY
 MN ZIP
 JOB #:

REVISION 1	
REVISION 2	
REVISION 3	
REVISION 4	
REVISION 5	
REVISION 6	
REVISION 7	
REVISION 8	
REVISION 9	
REVISION 10	
REVISION 11	
FINAL	2.28.23

All changes after above date will be done according to F.F.H. Change Order Policy

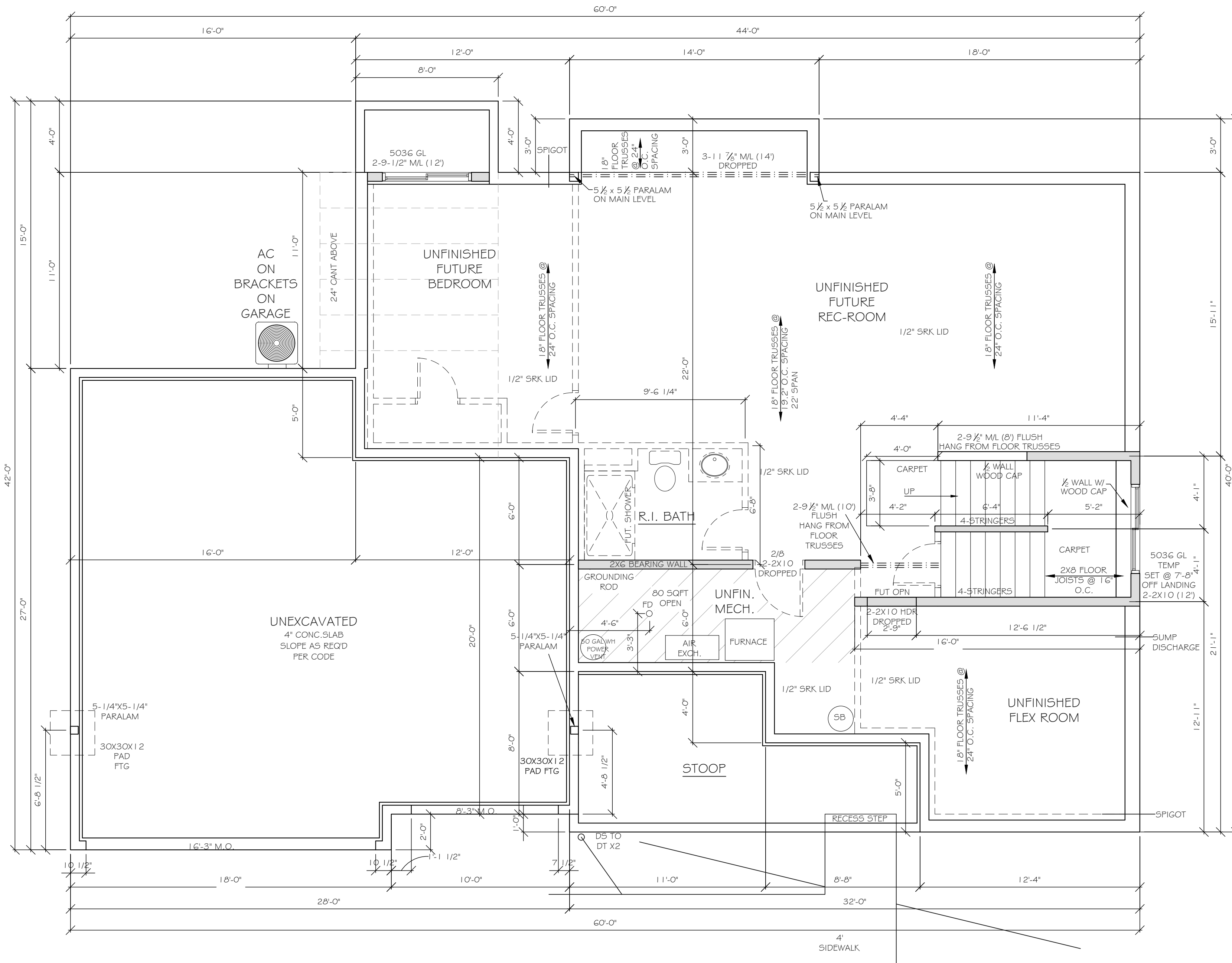
Homeowner Signature

Agent:
 Plan: MONROE
 Total Foundation: 2094
 House Foundation: 1276
 Finished: 3234
 Unfinished: 1215

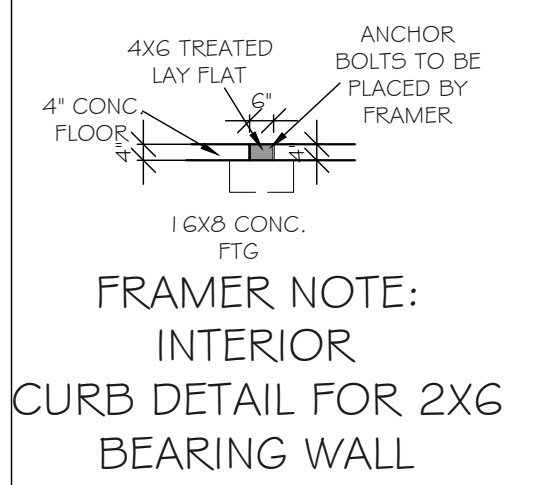
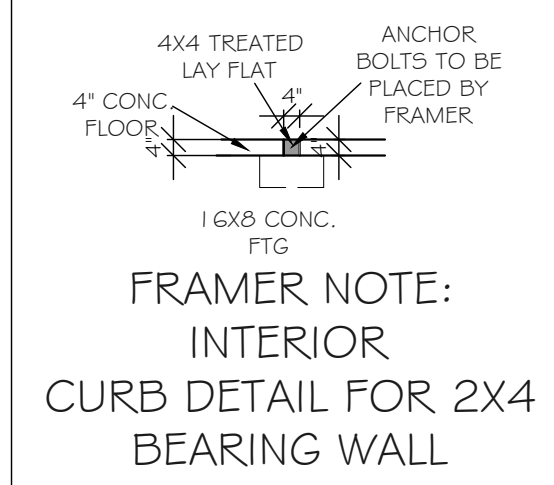
Scale: 1/4" = 1'-0"

Fin Sq Ft: 3234

Intellectual property of Fieldstone Family Homes, Inc. © 2008. ALL RIGHTS RESERVED. These plan drawings, including but not limited to, all text, designs, renditions, floor plans, along with the selection and arrangement of thereof, are original copyrighted materials owned by Fieldstone Family Homes, Inc. These materials are protected by federal law against unauthorized copying, or reproduction by unauthorized persons and entities.
 MN LIC: BC631164
 WI LIC: DC-070800080



FRAMER NOTES:
 -ALL WINDOWS/DOOR TO HAVE DOUBLE JACK STUDS
 -WINDOWS/DOORS LARGER THAN 8' TO HAVE DOUBLE KING STUDS
 SEE PAGE 2 FOR ANCHOR BOLT LAYOUT FOR 16' TRD PLATE AND 1' SPLICES



CLIENT:
 Project:

LOCATION:
 LOT _ BLK_ DEVELOPMENT
 Street
 CITY
 MN ZIP
 JOB #:

REVISION 1	
REVISION 2	
REVISION 3	
REVISION 4	
REVISION 5	
REVISION 6	
REVISION 7	
REVISION 8	
REVISION 9	
REVISION 10	
REVISION 11	
FINAL	2.28.23

All changes after above date will be done according to F.F.H. Change Order Policy

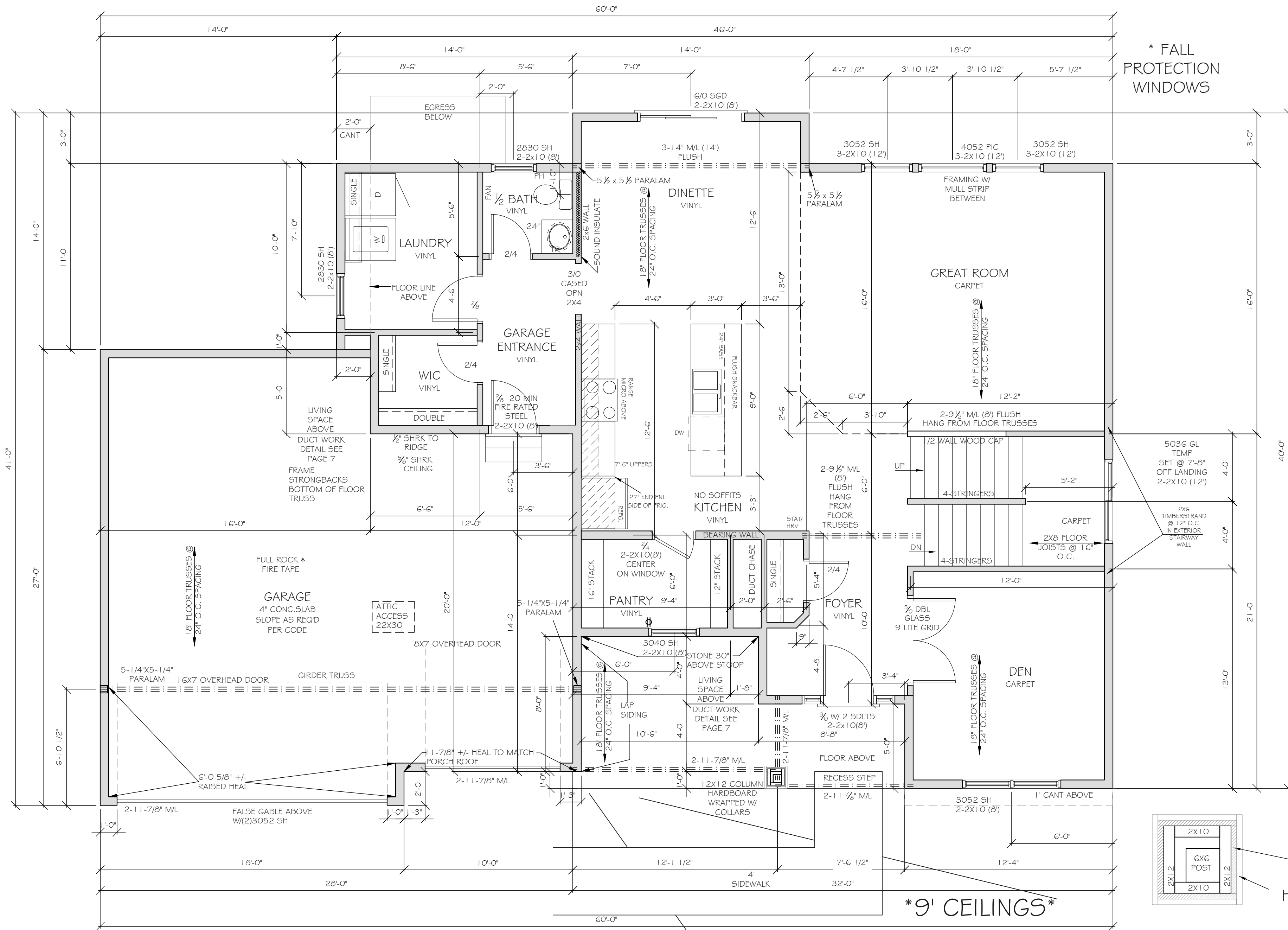
Homeowner Signature

Agent:
 Plan: MONROE
 Total Foundation: 2094
 House Foundation: 1276
 Finished: 3234
 Unfinished: 1215

Scale: 1/4" = 1'-0"

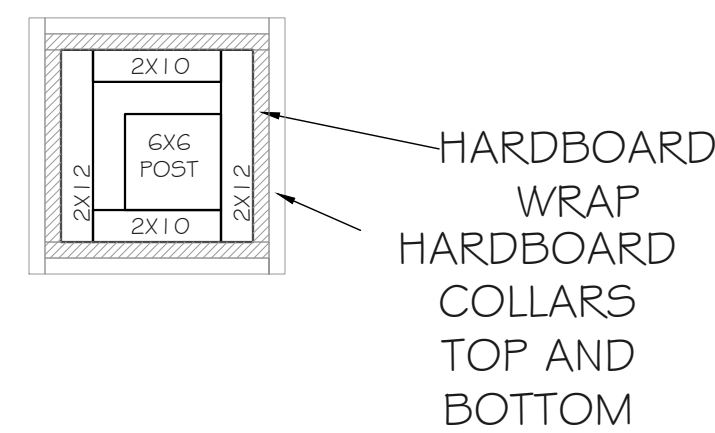
Fin Sq Ft: 61

FRAMER NOTES:
 -ALL WINDOWS/DOOR TO HAVE
 DOUBLE JACK STUDS
 -WINDOWS/DOORS LARGER THAN 8'
 TO HAVE DOUBLE KING STUDS



* FALL PROTECTION WINDOWS

* 9' CEILINGS *



POST FRAMING

Intellectual property of Fieldstone Family Homes, Inc. © 2008. ALL RIGHTS RESERVED. These plan drawings, including but not limited to, all text, designs, renditions, floor plans, along with the selection and arrangement of thereof, are original copyrighted materials owned by Fieldstone Family Homes, Inc. These materials are protected by federal law against unauthorized copying, or reproduction by unauthorized persons and entities.
 MN LIC: BC631164
 WI LIC: DC-070800080

CLIENT:
 Project:

LOCATION:
 LOT _ BLK_ DEVELOPMENT

Street
 CITY MN ZIP
 JOB #:

REVISION 1	
REVISION 2	
REVISION 3	
REVISION 4	
REVISION 5	
REVISION 6	
REVISION 7	
REVISION 8	
REVISION 9	
REVISION 10	
REVISION 11	
FINAL	2.28.23

All changes after above date will be done according to F.F.H. Change Order Policy

Homeowner Signature

Agent:
 Plan: MONROE
 Total Foundation: 2094
 House Foundation: 1276
 Finished: 3234
 Unfinished: 1215

Scale: 1/4" = 1'-0"

Fin Sq Ft: 1297

Intellectual property of Fieldstone Family Homes, Inc. © 2008. ALL RIGHTS RESERVED. These plan drawings, including but not limited to, all text, designs, renditions, floor plans, along with the selection and arrangement of thereof, are original copyrighted materials owned by Fieldstone Family Homes, Inc. These materials are protected by federal law against unauthorized copying, or reproduction by unauthorized persons and entities.
 MN LIC: BC631164
 WI LIC: DC-070800080

CLIENT:
 Project:

LOCATION:
 LOT _ BLK_ DEVELOPMENT

Street
 CITY
 MN ZIP
 JOB #:

REVISION 1	
REVISION 2	
REVISION 3	
REVISION 4	
REVISION 5	
REVISION 6	
REVISION 7	
REVISION 8	
REVISION 9	
REVISION 10	
REVISION 11	
FINAL	2.28.23

All changes after above date will be done according to F.F.H. Change Order Policy

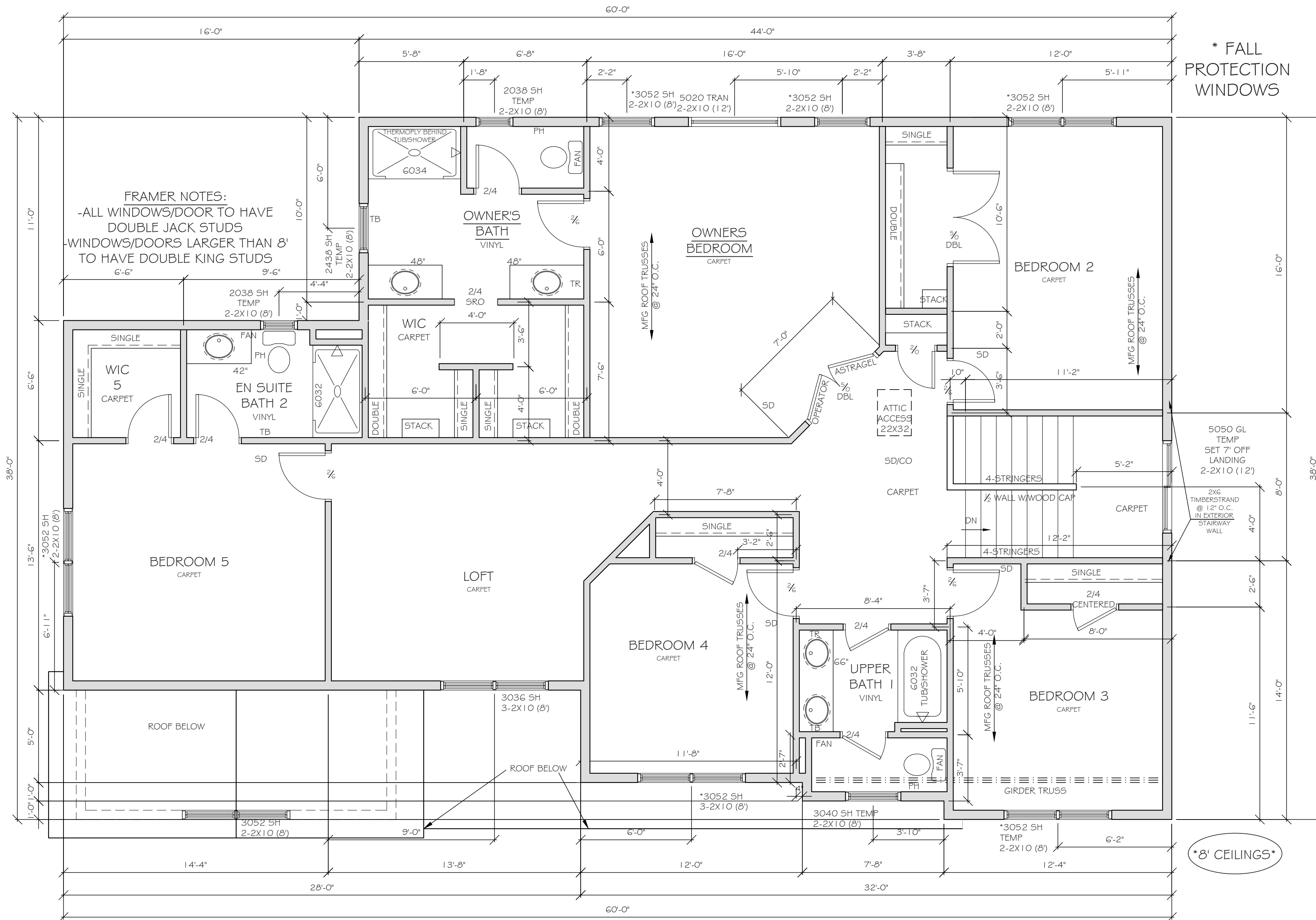
Homeowner Signature

Agent:
 Plan: MONROE

Total Foundation: 2094
 House Foundation: 1276
 Finished: 3234
 Unfinished: 1215

Scale: 1/4" = 1'-0"

Fin Sq Ft: 1876



* FALL PROTECTION WINDOWS

8' CEILINGS