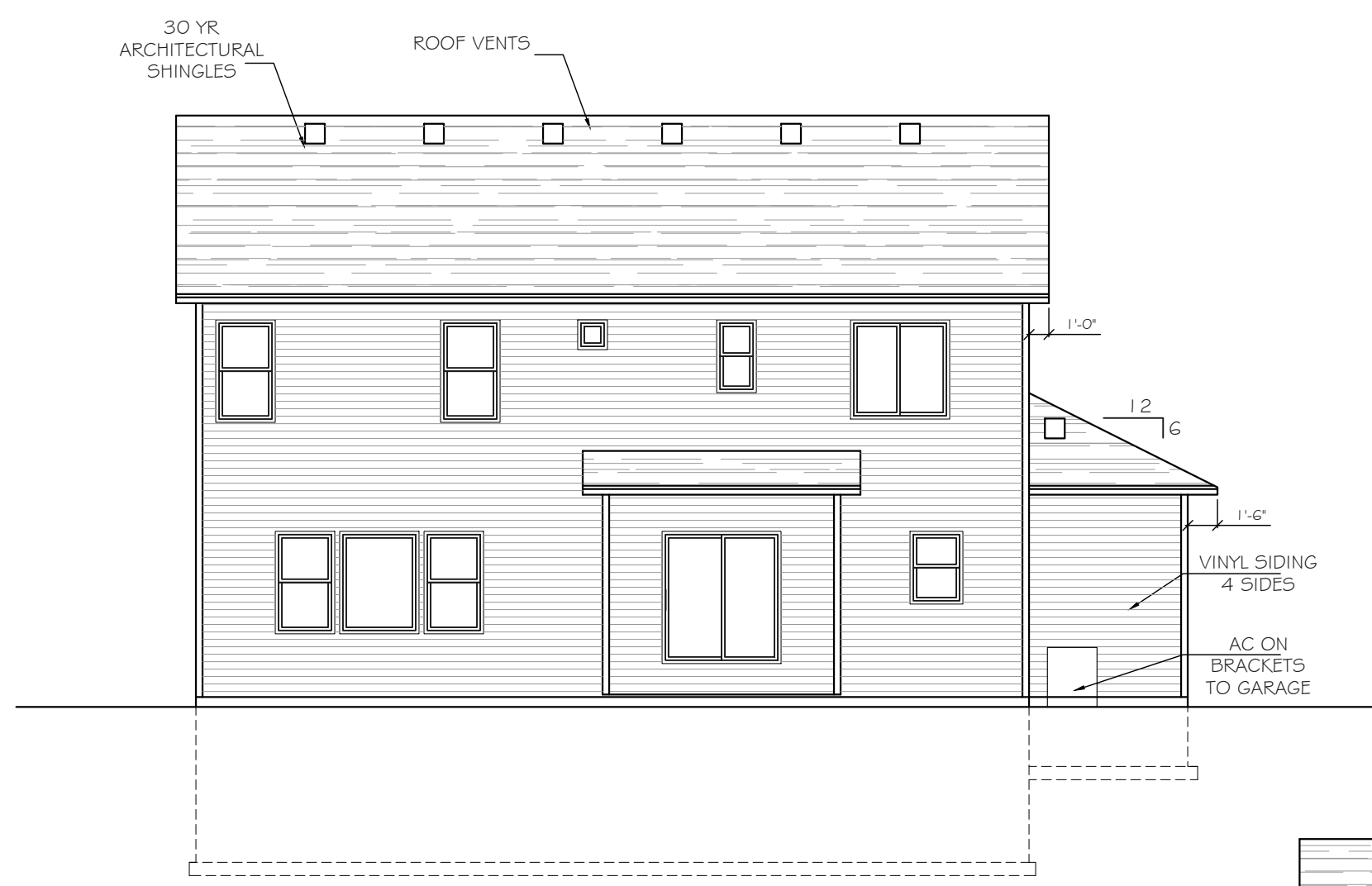
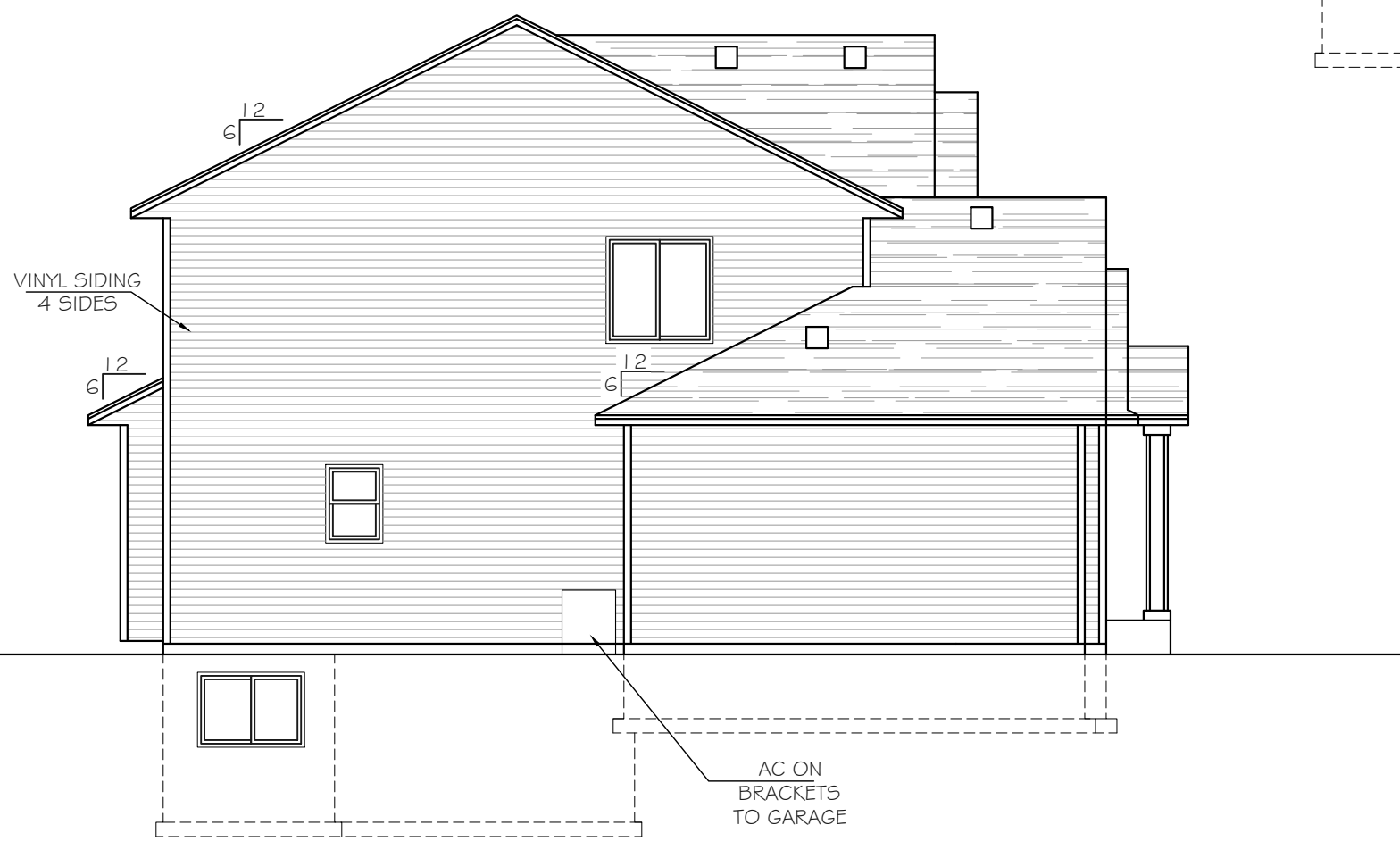


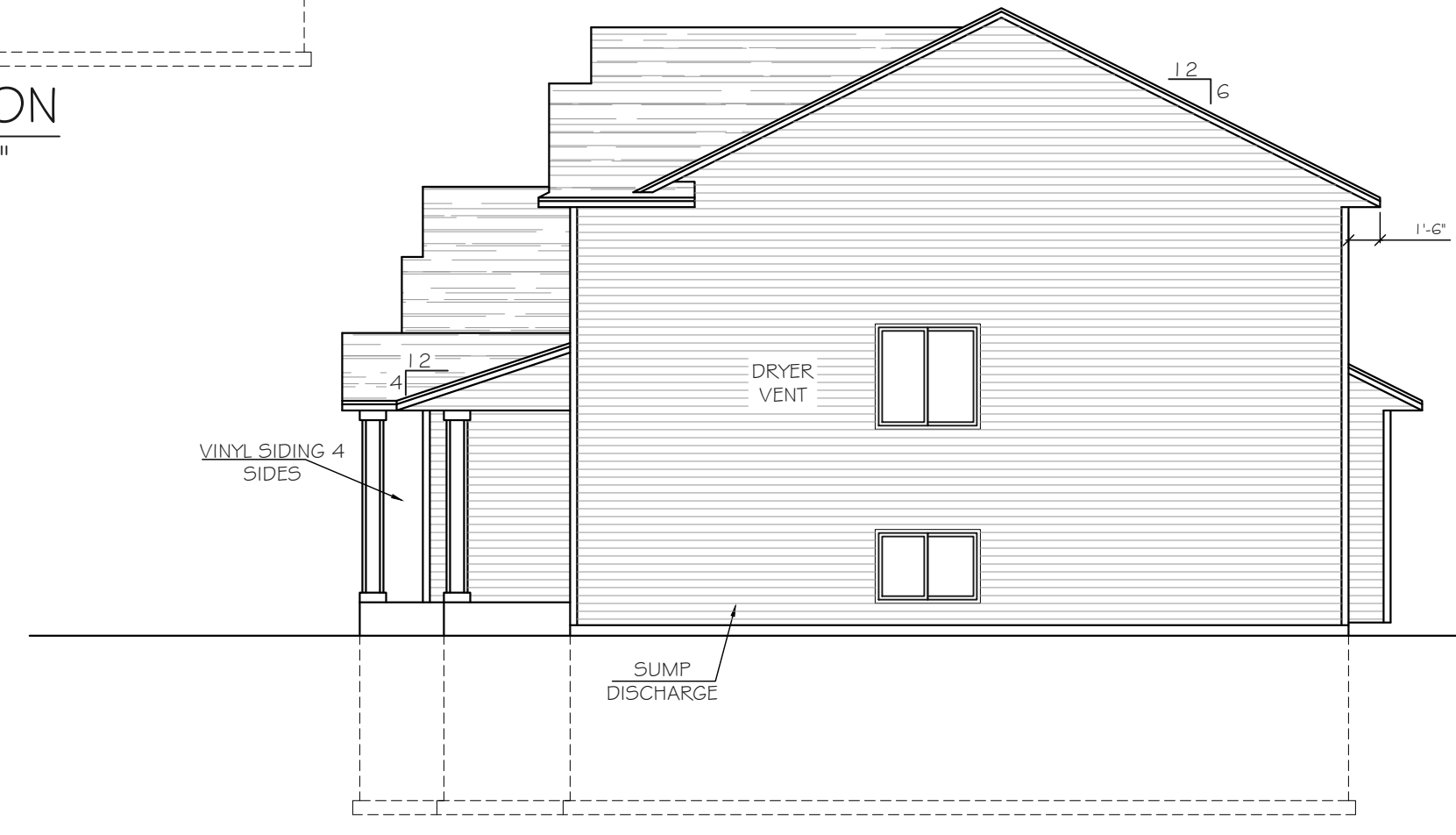
Intellectual property of Fieldstone Family Homes, Inc. © 2008. ALL RIGHTS RESERVED. These plan drawings, including but not limited to, all text, designs, renditions, floor plans, along with the selection and arrangement of thereof, are original copyrighted materials owned by Fieldstone Family Homes, Inc. These materials are protected by federal law against unauthorized copying, or reproduction by unauthorized persons and entities.  
 MN LIC: BCG31164  
 WI LIC: DC-070800080



REAR ELEVATION  
 SCALE: 1/8" = 1'-0"



LEFT ELEVATION  
 SCALE: 1/8" = 1'-0"



RIGHT ELEVATION  
 SCALE: 1/8" = 1'-0"



FRONT ELEVATION  
 SCALE: 1/8" = 1'-0"

CLIENT:  
 Project:

LOCATION:  
 LOT \_ BLK\_ DEVELOPMENT  
 Street  
 CITY  
 MN ZIP  
 JOB #:

REVISION 1	
REVISION 2	
REVISION 3	
REVISION 4	
REVISION 5	
REVISION 6	
REVISION 7	
REVISION 8	
REVISION 9	
REVISION 10	
REVISION 11	
FINAL	2.28.23

All changes after above date will be done according to F.F.H. Change Order Policy

Homeowner Signature

Agent:  
 Plan: MCKENNA  
 Total Foundation: 2028  
 House Foundation: 1238  
 Finished: 2805  
 Unfinished: 1163

Scale: 1/8" = 1'-0"

Fin Sq Ft: 2805

Intellectual property of Fieldstone Family Homes, Inc. © 2008. ALL RIGHTS RESERVED. These plan drawings, including but not limited to, all text, designs, renditions, floor plans, along with the selection and arrangement of thereof, are original copyrighted materials owned by Fieldstone Family Homes, Inc. These materials are protected by federal law against unauthorized copying, or reproduction by unauthorized persons and entities.

MN LIC: BC631164  
WI LIC: DC-070800080

CLIENT:  
Project:

LOCATION:  
LOT \_ BLK \_  
DEVELOPMENT

Street  
CITY  
MN ZIP  
JOB #:

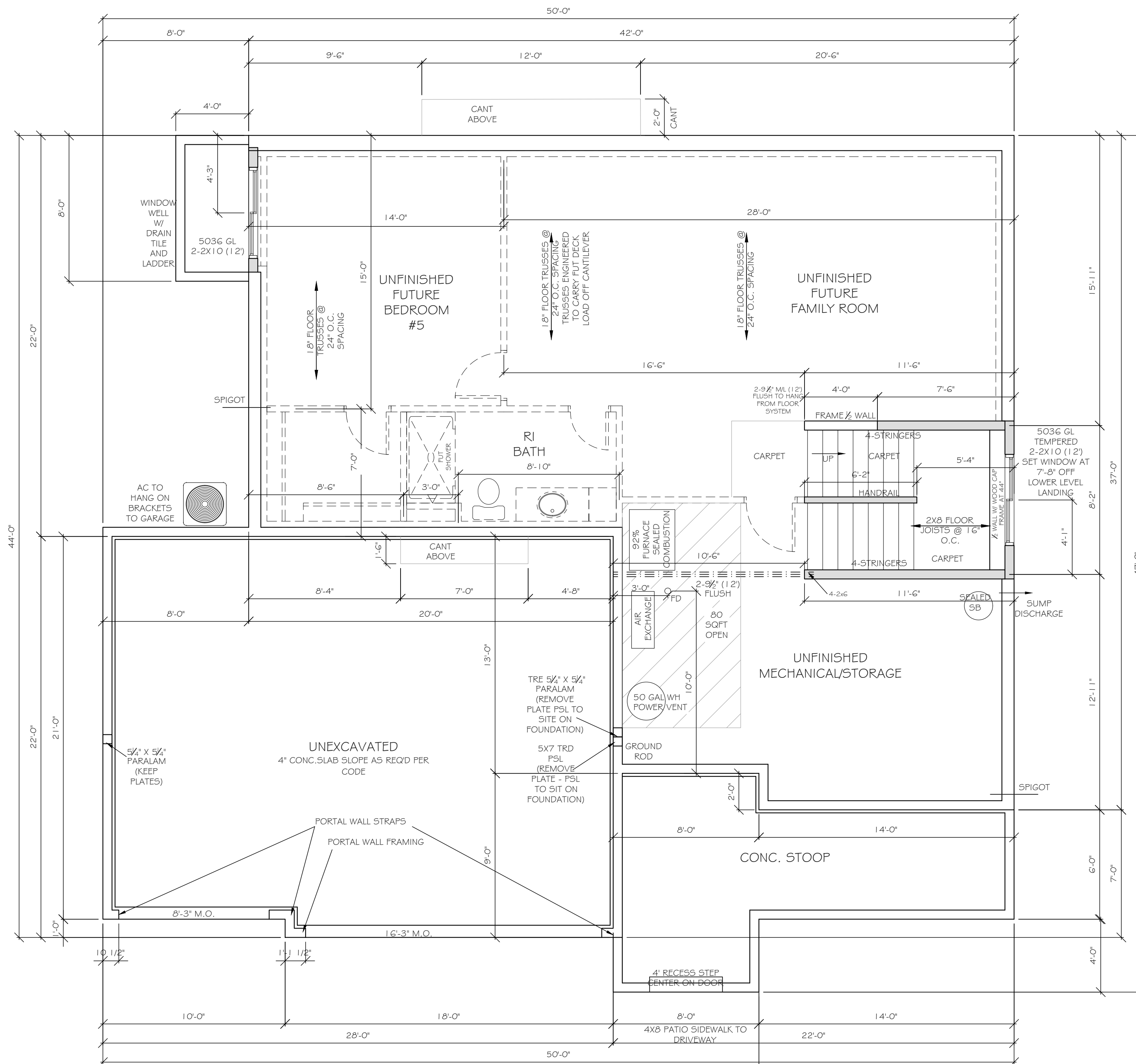
REVISION 1	
REVISION 2	
REVISION 3	
REVISION 4	
REVISION 5	
REVISION 6	
REVISION 7	
REVISION 8	
REVISION 9	
REVISION 10	
REVISION 11	
FINAL	2.28.23

All changes after above date will be done according to F.F.H. Change Order Policy

Homeowner  
Signature

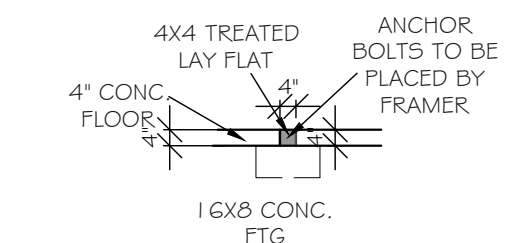
Agent:  
Plan: MCKENNA  
Total Foundation: 2028  
House Foundation: 1238  
Finished: 2805  
Unfinished: 1163

Scale: 1/4" = 1'-0"  
Fin 5q Ft: 75

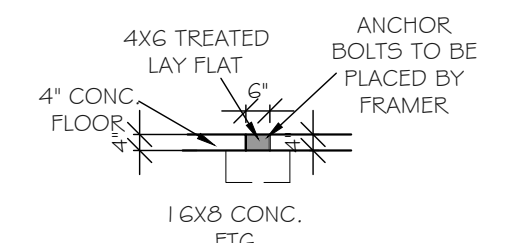


**FRAMER NOTES:**  
-ALL WINDOWS/DOOR TO HAVE DOUBLE JACK STUDS  
-WINDOWS/DOORS LARGER THAN 8' TO HAVE DOUBLE KING STUDS

SEE PAGE 2 FOR ANCHOR BOLT LAYOUT FOR 16' TRD PLATE AND 1' SPLICES



**FRAMER NOTE:**  
INTERIOR  
CURB DETAIL FOR 2X4  
BEARING WALL



**FRAMER NOTE:**  
INTERIOR  
CURB DETAIL FOR 2X6  
BEARING WALL

Intellectual property of Fieldstone Family Homes, Inc. © 2008. ALL RIGHTS RESERVED. These plan drawings, including but not limited to, all text, designs, renditions, floor plans, along with the selection and arrangement of thereof, are original copyrighted materials owned by Fieldstone Family Homes, Inc. These materials are protected by federal law against unauthorized copying, or reproduction by unauthorized persons and entities.  
 MN LIC: BC631164  
 WI LIC: DC-070800080

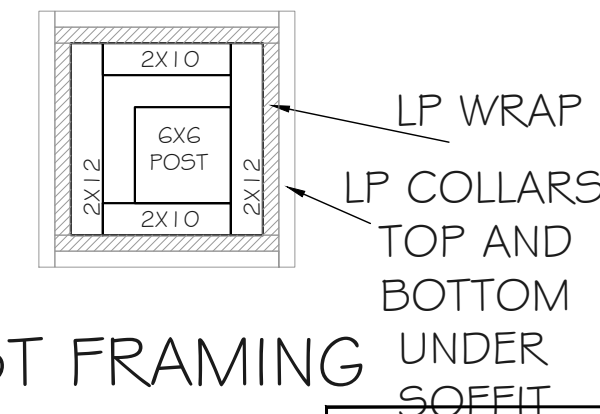
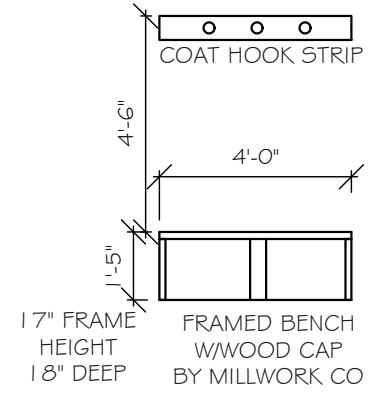
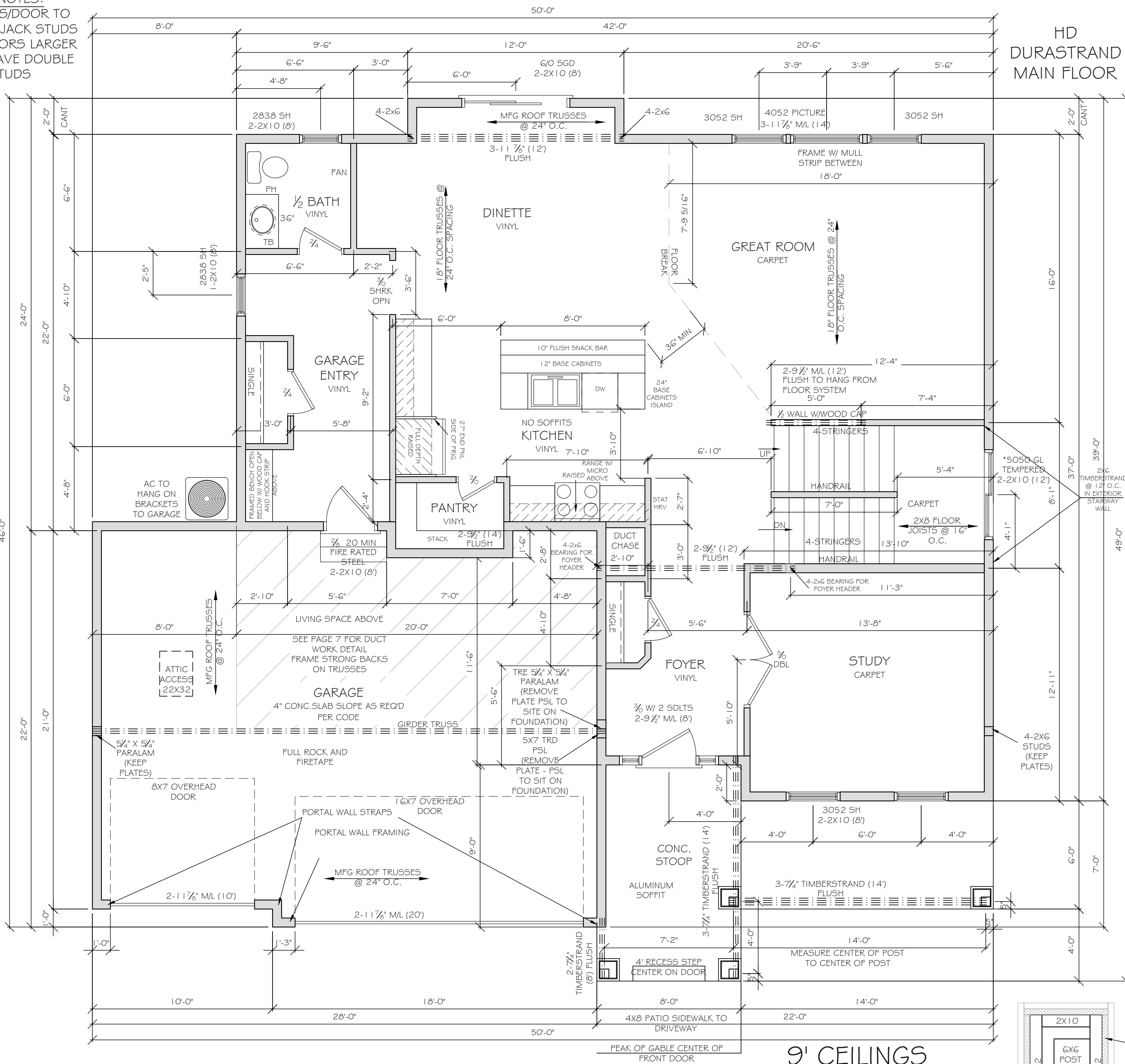
CLIENT:  
 Project:  
 LOCATION:  
 LOT \_ BLK\_ DEVELOPMENT  
 Street  
 CITY MN ZIP  
 JOB #:

REVISION 1	
REVISION 2	
REVISION 3	
REVISION 4	
REVISION 5	
REVISION 6	
REVISION 7	
REVISION 8	
REVISION 9	
REVISION 10	
REVISION 11	
FINAL	2.28.23

All changes after above date will be done according to F.F.H. Change Order Policy

Homeowner Signature  
 Agent:  
 Plan: MCKENNA  
 Total Foundation: 2028  
 House Foundation: 1238  
 Finished: 2805  
 Unfinished: 1163  
 Scale: 1/4" = 1'-0"  
 Fin Sq Ft: 1272

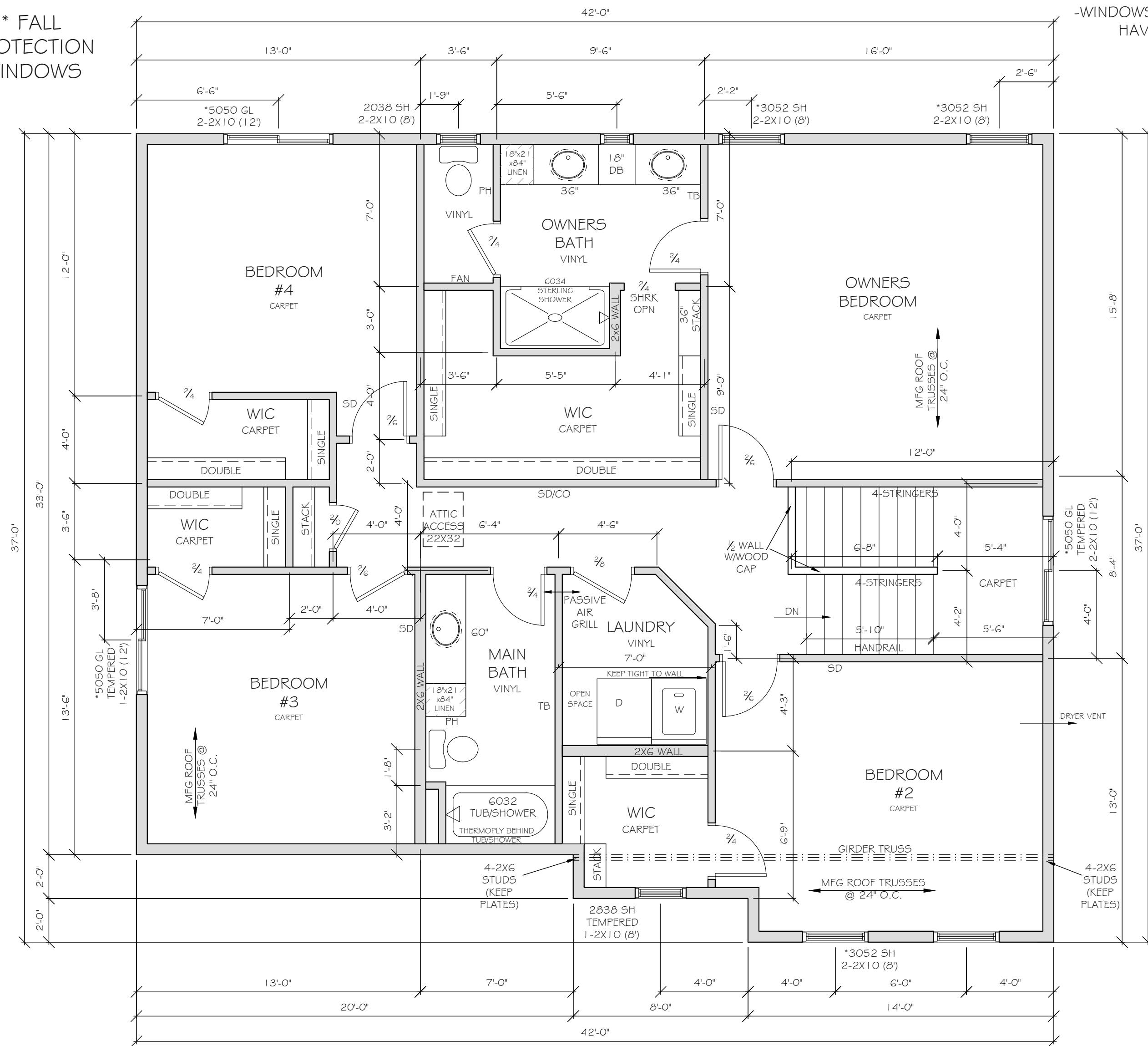
FRAMER NOTES:  
 -ALL WINDOWS/DOOR TO HAVE DOUBLE JACK STUDS  
 -WINDOWS/DOORS LARGER THAN 8' TO HAVE DOUBLE KING STUDS



Intellectual property of Fieldstone Family Homes, Inc. © 2008. ALL RIGHTS RESERVED. These plan drawings, including but not limited to, all text, designs, renditions, floor plans, along with the selection and arrangement of thereof, are original copyrighted materials owned by Fieldstone Family Homes, Inc. These materials are protected by federal law against unauthorized copying, or reproduction by unauthorized persons and entities.  
 MN LIC: BC631164  
 WI LIC: DC-070800080

FRAMER NOTES:  
 -ALL WINDOWS/DOOR TO HAVE DOUBLE JACK STUDS  
 -WINDOWS/DOORS LARGER THAN 8' TO HAVE DOUBLE KING STUDS

\* FALL PROTECTION WINDOWS



CLIENT:  
 Project:

LOCATION:  
 LOT \_ BLK\_ DEVELOPMENT

Street  
 CITY  
 MN ZIP  
 JOB #:

REVISION 1	
REVISION 2	
REVISION 3	
REVISION 4	
REVISION 5	
REVISION 6	
REVISION 7	
REVISION 8	
REVISION 9	
REVISION 10	
REVISION 11	
FINAL	2.28.23

All changes after above date will be done according to F.F.H. Change Order Policy

Homeowner Signature

Agent:  
 Plan: MCKENNA  
 Total Foundation: 2028  
 House Foundation: 1238  
 Finished: 2805  
 Unfinished: 1163

Scale: 1/4" = 1'-0"  
 Fin Sq Ft: 1458