

Intellectual property of Fieldstone Family Homes, Inc. © 2008. ALL RIGHTS RESERVED. These plan drawings, including but not limited to, all text, designs, renditions, floor plans, along with the selection and arrangement of thereof, are original copyrighted materials owned by Fieldstone Family Homes, Inc. These materials are protected by federal law against unauthorized copying, or reproduction by unauthorized persons and entities.

MN LIC: BC631164
WI LIC: DC-070800080

CLIENT:
Project:

LOCATION:
LOT _ BLK_ DEVELOPMENT

Street
CITY
MN ZIP
JOB #:

REVISION 1	
REVISION 2	
REVISION 3	
REVISION 4	
REVISION 5	
REVISION 6	
REVISION 7	
REVISION 8	
REVISION 9	
REVISION 10	
REVISION 11	
FINAL	2.28.23

All changes after above date will be done according to F.F.H. Change Order Policy

Homeowner Signature

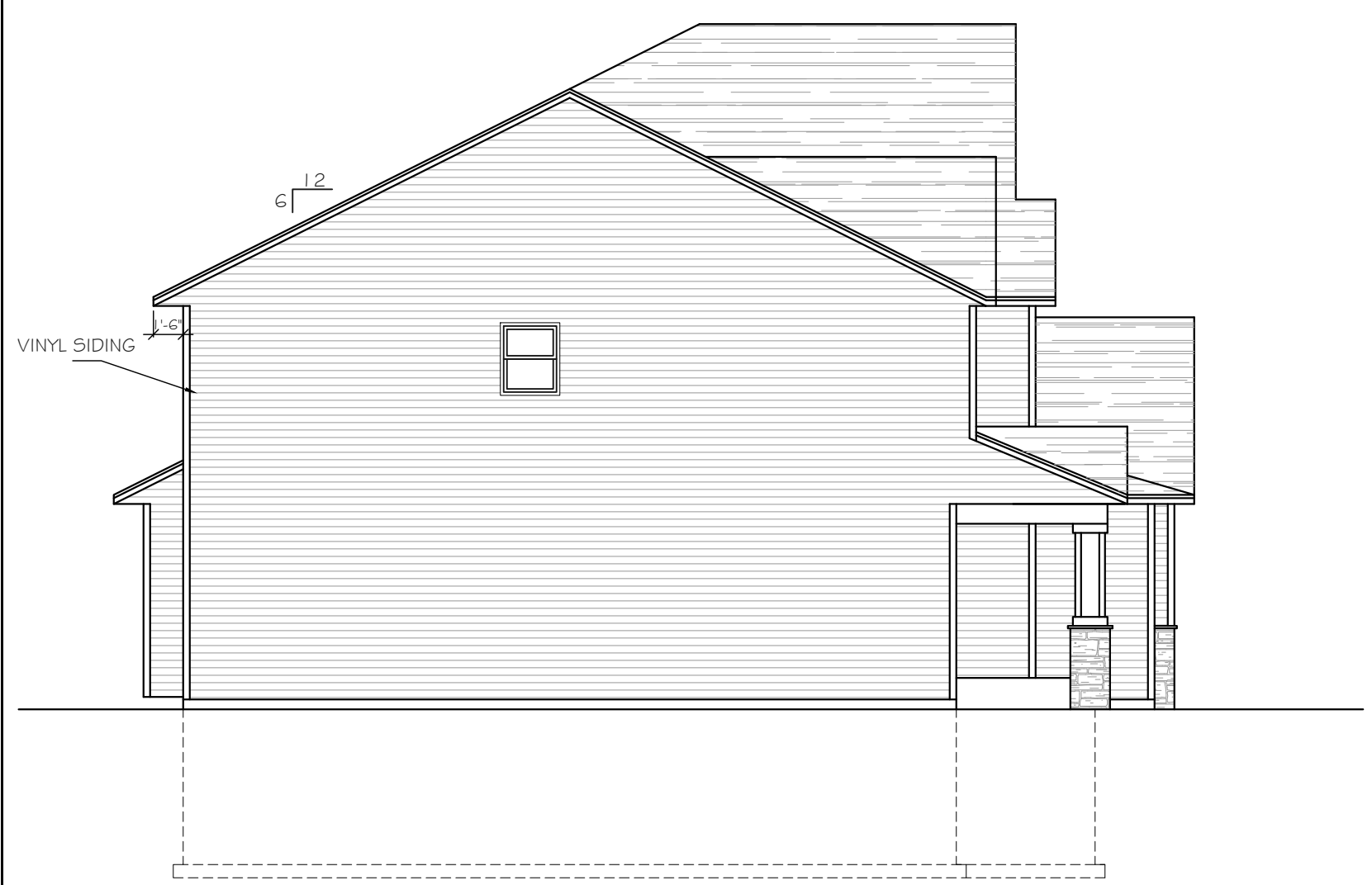
Agent:
Plan: MARQUETTE
Total Foundation: 2514
House Foundation: 1652
Finished: 3731
Unfinished: 1539

Scale: 1/4" = 1'-0"

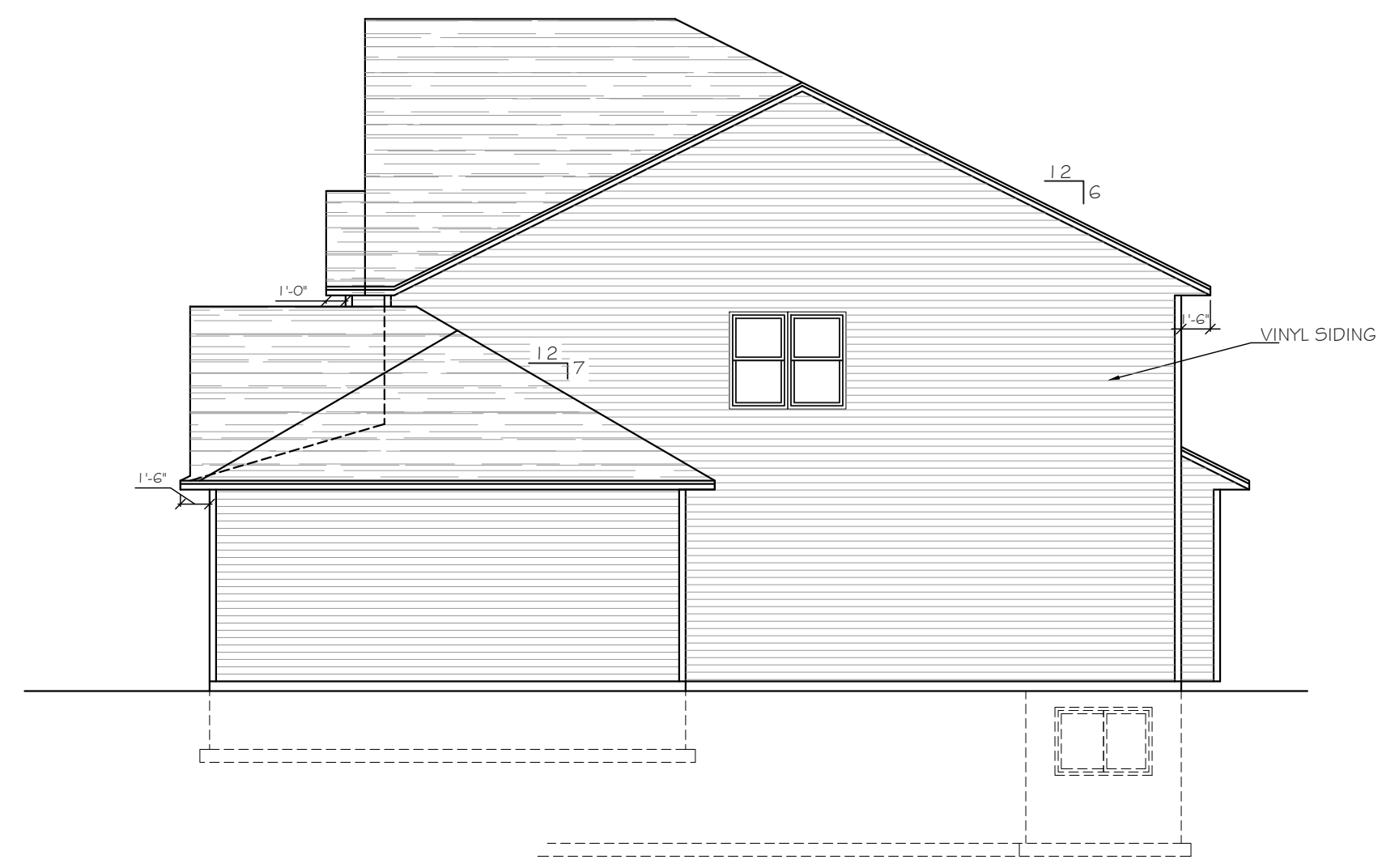
Fin Sq Ft: 3731



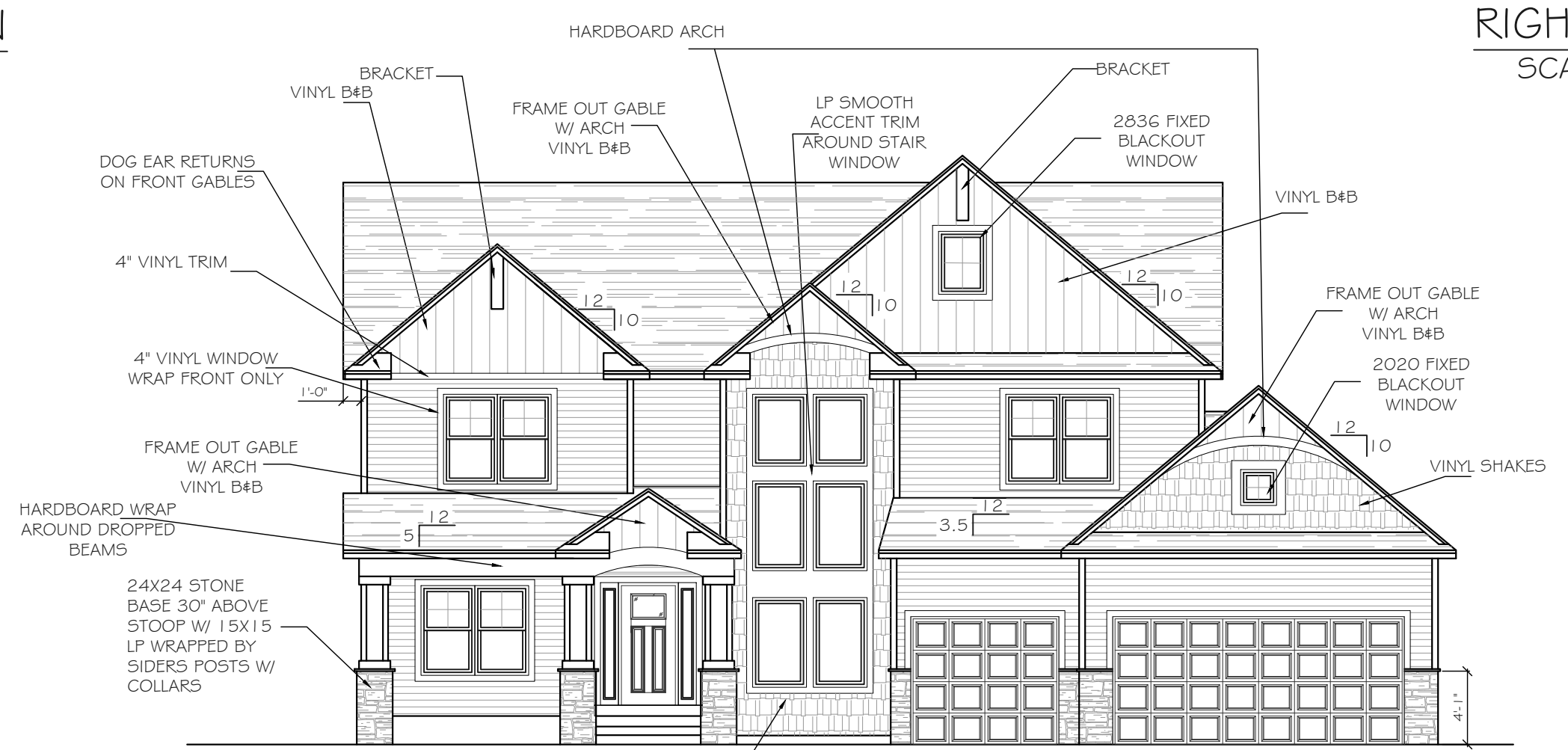
REAR ELEVATION
SCALE: 1/8" = 1'-0"



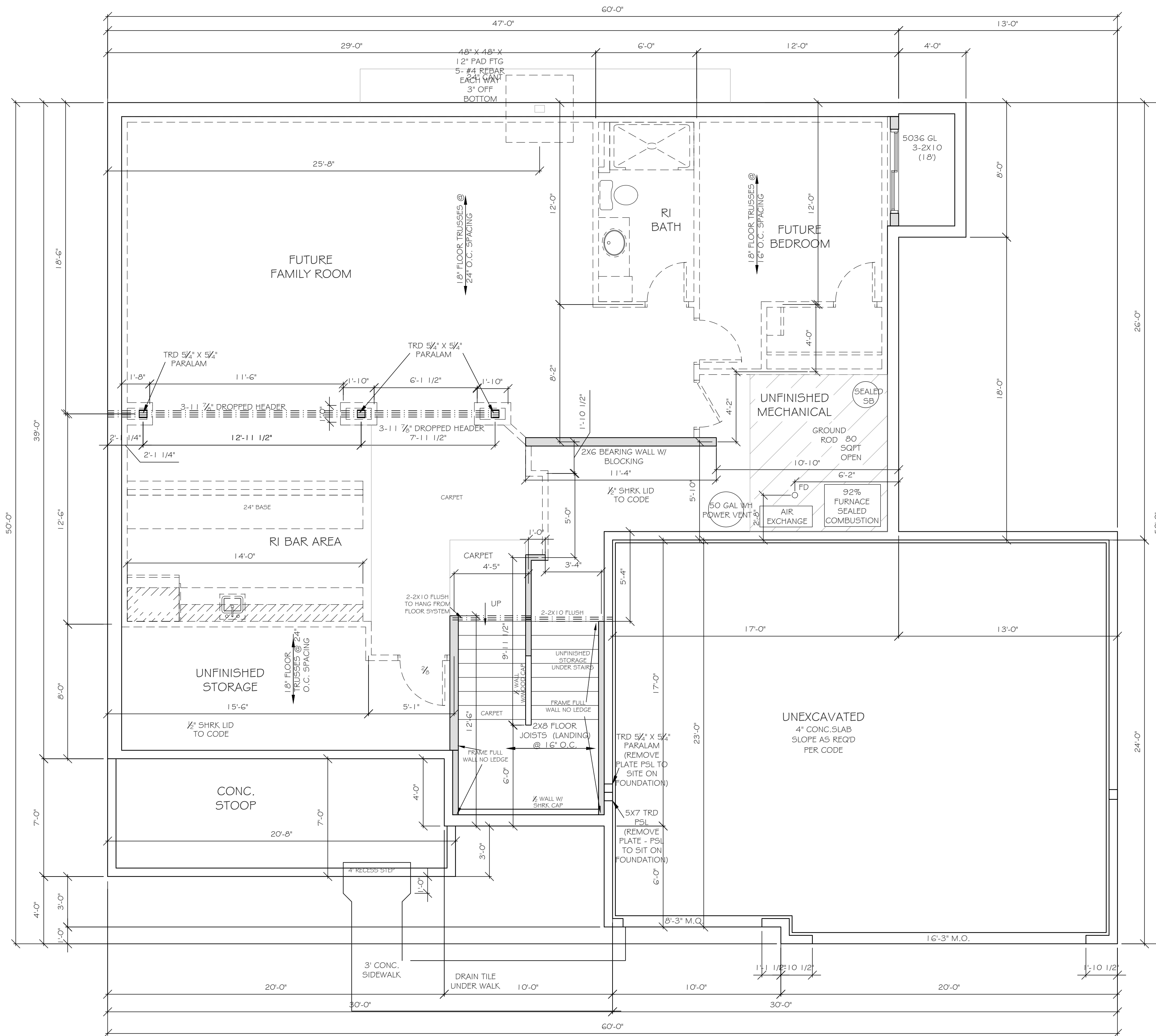
LEFT ELEVATION
SCALE: 1/8" = 1'-0"



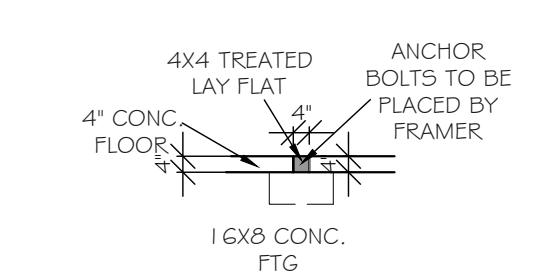
RIGHT ELEVATION
SCALE: 1/8" = 1'-0"



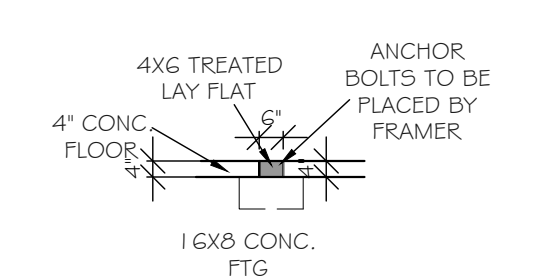
FRONT ELEVATION
SCALE: 1/8" = 1'-0"



FRAMER NOTES:
 -ALL WINDOWS/DOOR TO HAVE DOUBLE JACK STUDS
 -WINDOWS/DOORS LARGER THAN 8' TO HAVE DOUBLE KING STUDS
 SEE PAGE 2 FOR ANCHOR BOLT LAYOUT FOR 1 6' TRD PLATE AND 1' SPLICES



FRAMER NOTE:
 INTERIOR CURB DETAIL FOR 2X4 BEARING WALL



FRAMER NOTE:
 INTERIOR CURB DETAIL FOR 2X6 BEARING WALL

Intellectual property of Fieldstone Family Homes, Inc. © 2008. ALL RIGHTS RESERVED. These plan drawings, including but not limited to, all text, designs, renditions, floor plans, along with the selection and arrangement of thereof, are original copyrighted materials owned by Fieldstone Family Homes, Inc. These materials are protected by federal law against unauthorized copying, or reproduction by unauthorized persons and entities.
 MN LIC: BC631164
 WI LIC: DC-070800080

CLIENT:
 Project:

LOCATION:
 LOT _ BLK_ DEVELOPMENT
 Street
 CITY
 MN ZIP
 JOB #:

REVISION 1	
REVISION 2	
REVISION 3	
REVISION 4	
REVISION 5	
REVISION 6	
REVISION 7	
REVISION 8	
REVISION 9	
REVISION 10	
REVISION 11	
FINAL	2.28.23

All changes after above date will be done according to F.F.H. Change Order Policy

Homeowner Signature

Agent:
 Plan: MARQUETTE
 Total Foundation: 2514
 House Foundation: 1652
 Finished: 3731
 Unfinished: 1539

Scale: 1/4" = 1'-0"

Fin Sq Ft: 113

Intellectual property of Fieldstone Family Homes, Inc. © 2008. ALL RIGHTS RESERVED. These plan drawings, including but not limited to, all text, designs, renditions, floor plans, along with the selection and arrangement of thereof, are original copyrighted materials owned by Fieldstone Family Homes, Inc. These materials are protected by federal law against unauthorized copying, or reproduction by unauthorized persons and entities.
 MN LIC: BC631164
 WI LIC: DC-070800080

CLIENT:
 Project:

LOCATION:
 LOT _ BLK_ DEVELOPMENT

Street
 CITY
 MN ZIP
 JOB #:

REVISION 1	
REVISION 2	
REVISION 3	
REVISION 4	
REVISION 5	
REVISION 6	
REVISION 7	
REVISION 8	
REVISION 9	
REVISION 10	
REVISION 11	
FINAL	2.28.23

All changes after above date will be done according to F.F.H. Change Order Policy

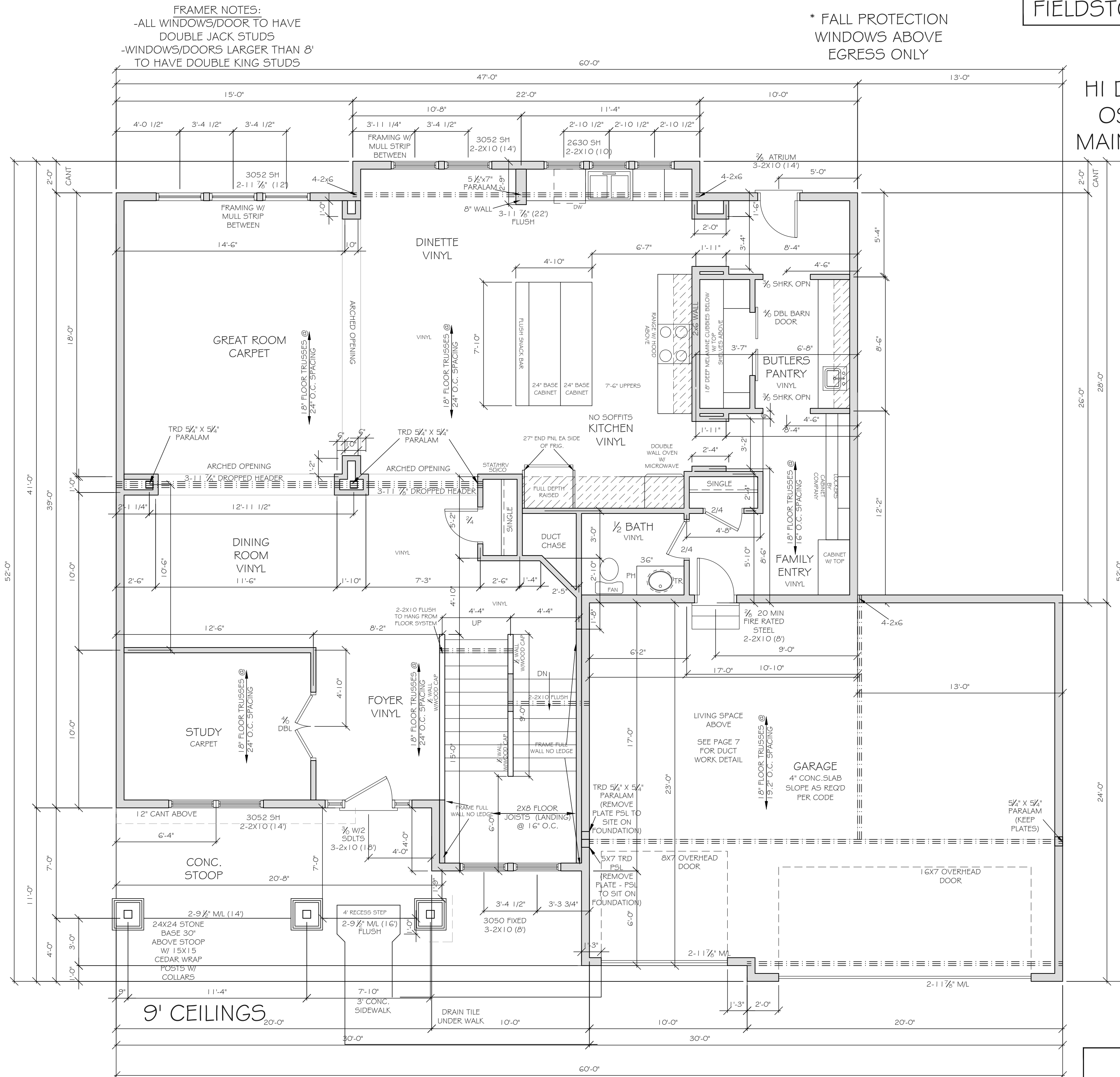
Homeowner
 Signature

Agent:
 Plan: MARQUETTE
 Total Foundation: 2514
 House Foundation: 1652
 Finished: 3731
 Unfinished: 1539

Scale: 1/4" = 1'-0"
 Fin Sq Ft: 1696

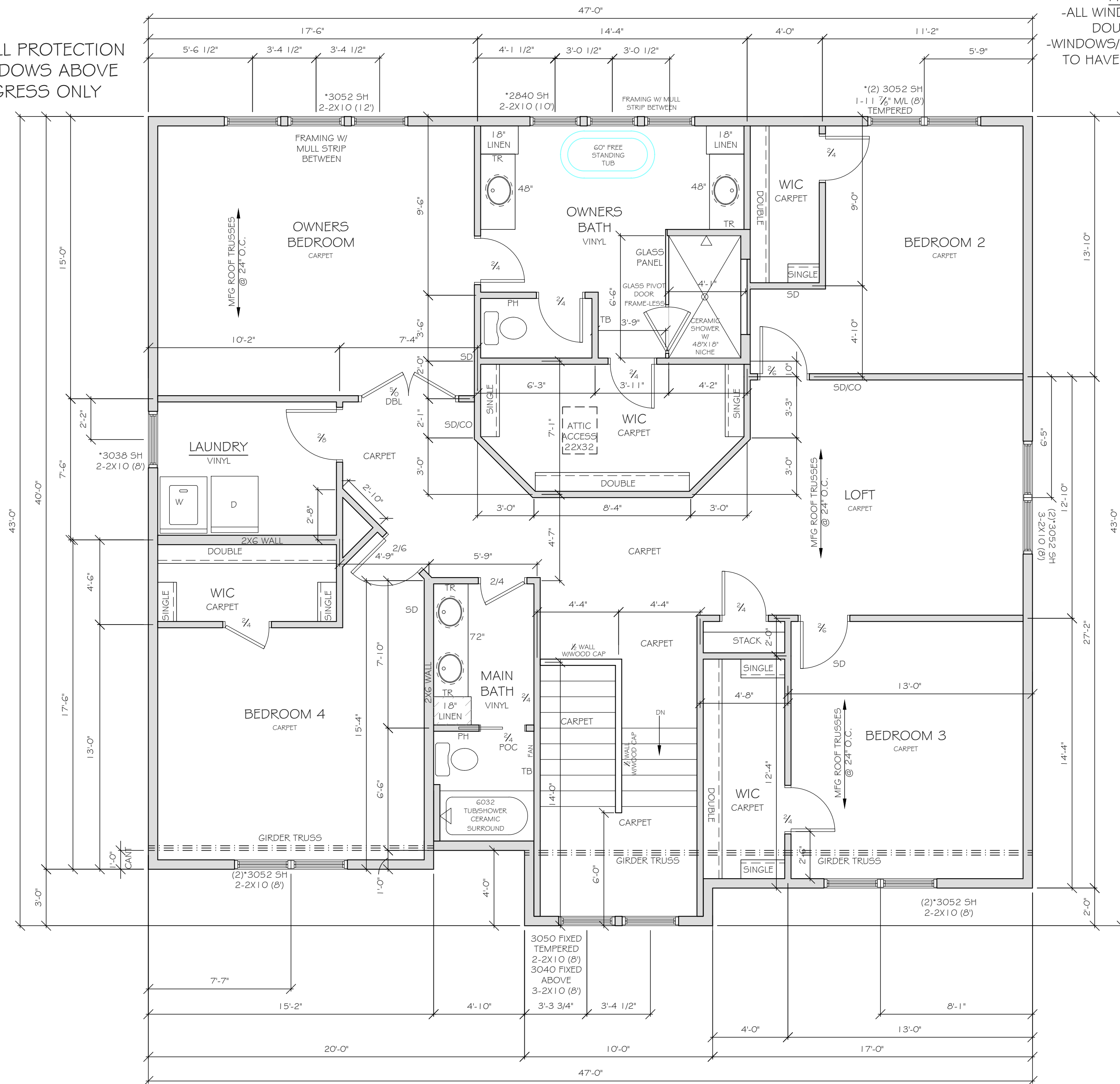
* FALL PROTECTION
 WINDOWS ABOVE
 EGRESS ONLY

HI DENSITY
 OSB ALL
 MAIN FLOOR



FRAMER NOTES:
 -ALL WINDOWS/DOOR TO HAVE DOUBLE JACK STUDS
 -WINDOWS/DOORS LARGER THAN 8' TO HAVE DOUBLE KING STUDS

* FALL PROTECTION WINDOWS ABOVE EGRESS ONLY



Intellectual property of Fieldstone Family Homes, Inc. © 2008. ALL RIGHTS RESERVED. These plan drawings, including but not limited to, all text, designs, renditions, floor plans, along with the selection and arrangement of thereof, are original copyrighted materials owned by Fieldstone Family Homes, Inc. These materials are protected by federal law against unauthorized copying, or reproduction by unauthorized persons and entities.

MN LIC: BCG31164
 WI LIC: DC-070800080

CLIENT:
 Project:

LOCATION:
 LOT _ BLK_ DEVELOPMENT
 Street
 CITY
 MN ZIP
 JOB #:

REVISION 1	
REVISION 2	
REVISION 3	
REVISION 4	
REVISION 5	
REVISION 6	
REVISION 7	
REVISION 8	
REVISION 9	
REVISION 10	
REVISION 11	
FINAL	2.28.23

All changes after above date will be done according to F.F.H. Change Order Policy

Homeowner Signature

Agent:
 Plan: MARQUETTE
 Total Foundation: 2514
 House Foundation: 1652
 Finished: 3731
 Unfinished: 1539

Scale: 1/4" = 1'-0"

Fin Sq Ft: 1922