

Intellectual property of Fieldstone Family Homes, Inc. © 2008. ALL RIGHTS RESERVED. These plan drawings, including but not limited to, all text, designs, renditions, floor plans, along with the selection and arrangement of thereof, are original copyrighted materials owned by Fieldstone Family Homes, Inc. These materials are protected by federal law against unauthorized copying, or reproduction by unauthorized persons and entities.

MN LIC: BC631164  
WI LIC: DC-070800080

CLIENT:

Project:

LOCATION:

LOT \_ BLK\_ DEVELOPMENT

Street

CITY

MN

ZIP

JOB #:

REVISION 1

REVISION 2

REVISION 3

REVISION 4

REVISION 5

REVISION 6

REVISION 7

REVISION 8

REVISION 9

REVISION 10

REVISION 11

FINAL

2.28.23

All changes after above date will be done according to F.F.H. Change Order Policy

Homeowner Signature

Agent:

Plan: MAJESTIC

Total Foundation: 2294

House Foundation: 1564

Finished: 2560

Unfinished: 568

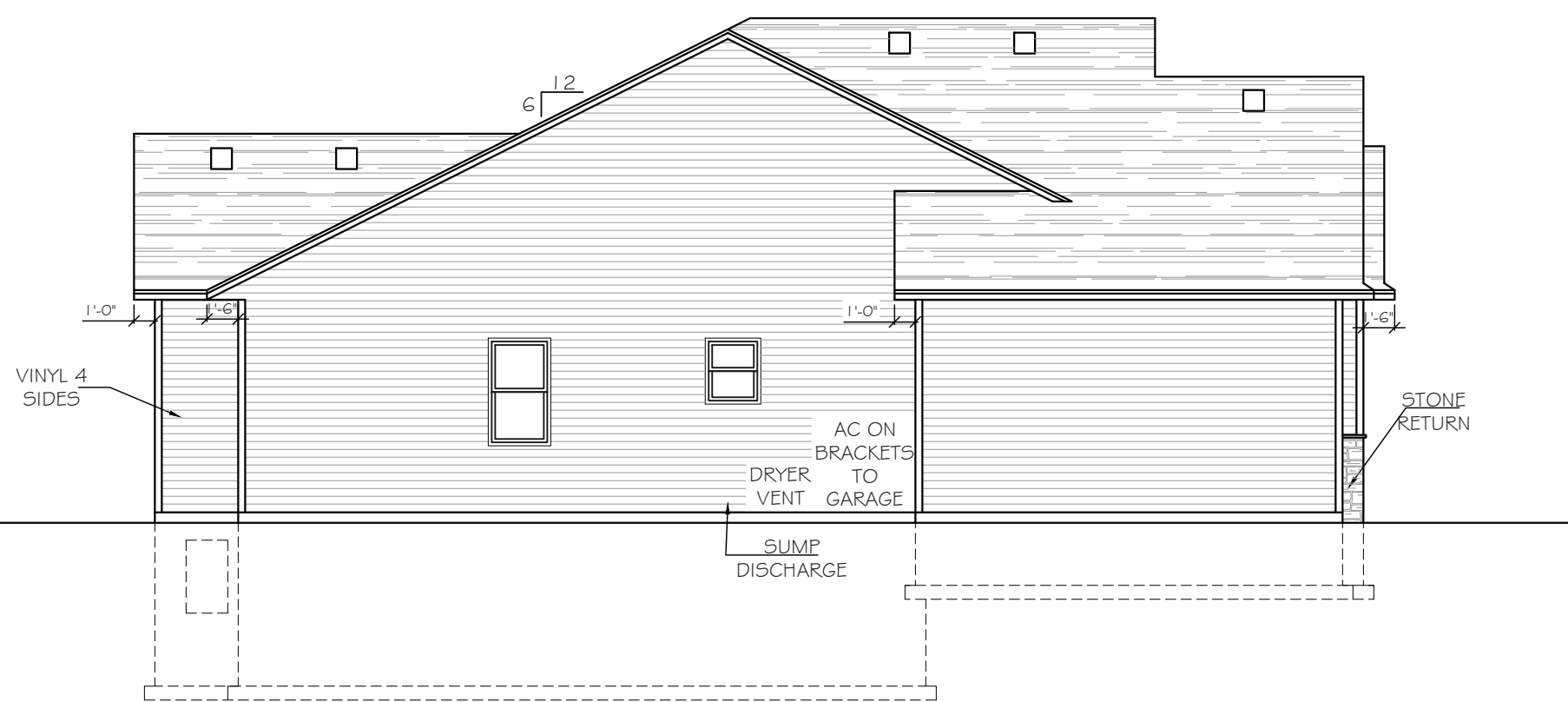
Scale: 1/8" = 1'-0"

Fin Sq Ft: 2560



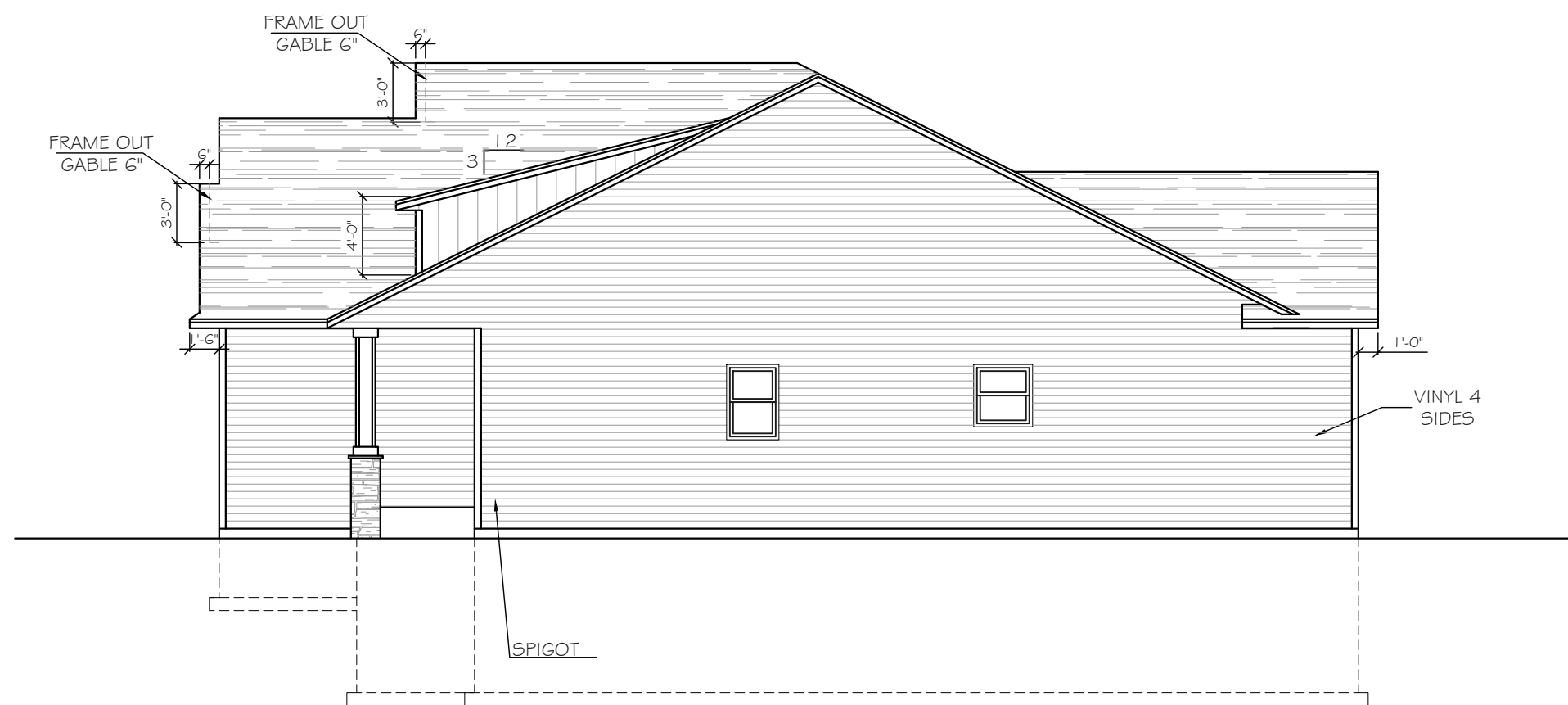
REAR ELEVATION

SCALE: 1/8" = 1'-0"



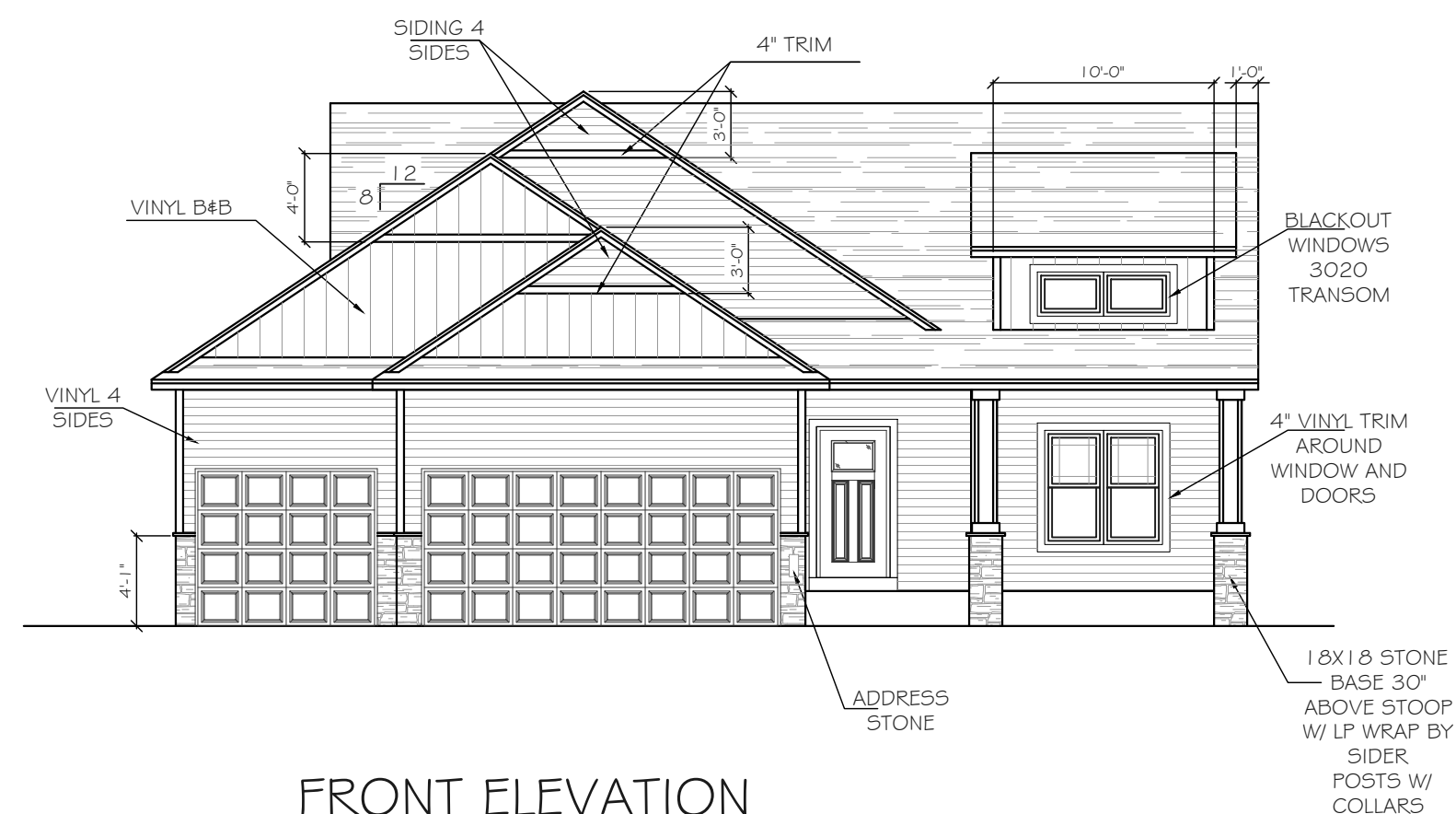
LEFT ELEVATION

SCALE: 1/8" = 1'-0"



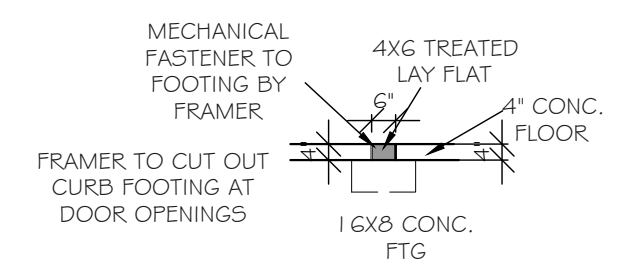
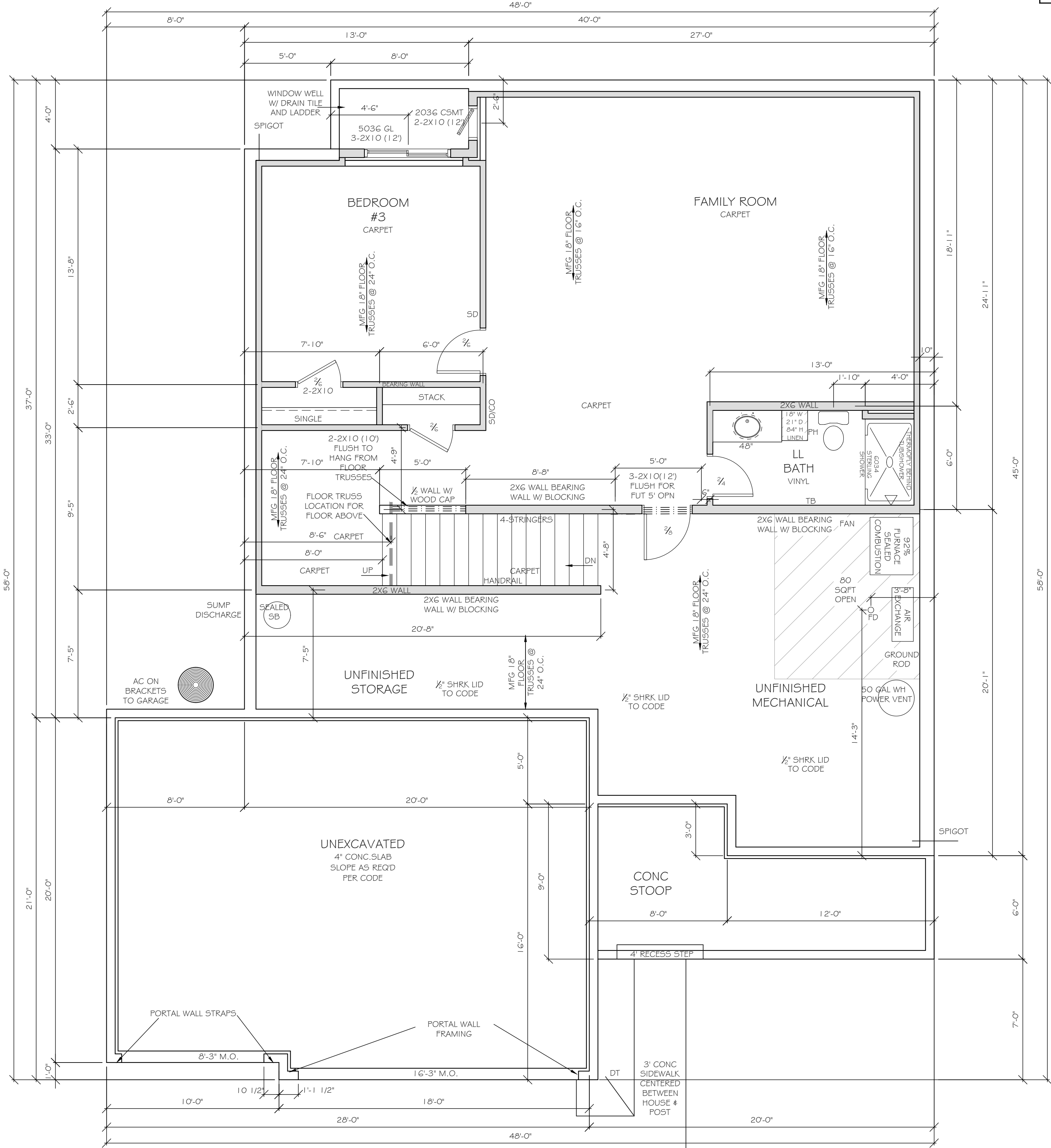
RIGHT ELEVATION

SCALE: 1/8" = 1'-0"



FRONT ELEVATION

SCALE: 1/8" = 1'-0"



**FRAMER NOTE:**  
**INTERIOR**  
**CURB DETAIL FOR 2X6**  
**BEARING WALL**

**FRAMER NOTES:**  
 -ALL WINDOWS/DOOR  
 TO HAVE DOUBLE JACK  
 STUDS  
 -WINDOWS/DOORS  
 LARGER THAN 8' TO  
 HAVE DOUBLE KING  
 STUDS

Intellectual property of Fieldstone Family Homes, Inc. © 2008. ALL RIGHTS RESERVED. These plan drawings, including but not limited to, all text, designs, renditions, floor plans, along with the selection and arrangement of thereof, are original copyrighted materials owned by Fieldstone Family Homes, Inc. These materials are protected by federal law against unauthorized copying, or reproduction by unauthorized persons and entities.  
 MN LIC: BC631164  
 WI LIC: DC-070800080

**CLIENT:**  
 Project:

**LOCATION:**  
 LOT \_ BLK \_  
 DEVELOPMENT  
 Street  
 CITY  
 MN ZIP  
 JOB #:

REVISION 1	
REVISION 2	
REVISION 3	
REVISION 4	
REVISION 5	
REVISION 6	
REVISION 7	
REVISION 8	
REVISION 9	
REVISION 10	
REVISION 11	
FINAL	2.28.23

All changes after above date will be done according to F.F.H. Change Order Policy

Homeowner Signature

Agent:  
 Plan: MAJESTIC  
 Total Foundation: 2294  
 House Foundation: 1564  
 Finished: 2560  
 Unfinished: 568

Scale: 1/4" = 1'-0"

Fin Sq Ft: 996

Intellectual property of Fieldstone Family Homes, Inc. © 2008. ALL RIGHTS RESERVED. These plan drawings, including but not limited to, all text, designs, renditions, floor plans, along with the selection and arrangement of thereof, are original copyrighted materials owned by Fieldstone Family Homes, Inc. These materials are protected by federal law against unauthorized copying, or reproduction by unauthorized persons and entities.

MN LIC: BC631164  
WI LIC: DC-070800080

CLIENT:  
Project:

LOCATION:  
LOT \_ BLK\_ DEVELOPMENT

Street  
CITY MN ZIP  
JOB #:

REVISION 1	
REVISION 2	
REVISION 3	
REVISION 4	
REVISION 5	
REVISION 6	
REVISION 7	
REVISION 8	
REVISION 9	
REVISION 10	
REVISION 11	
FINAL	2.28.23

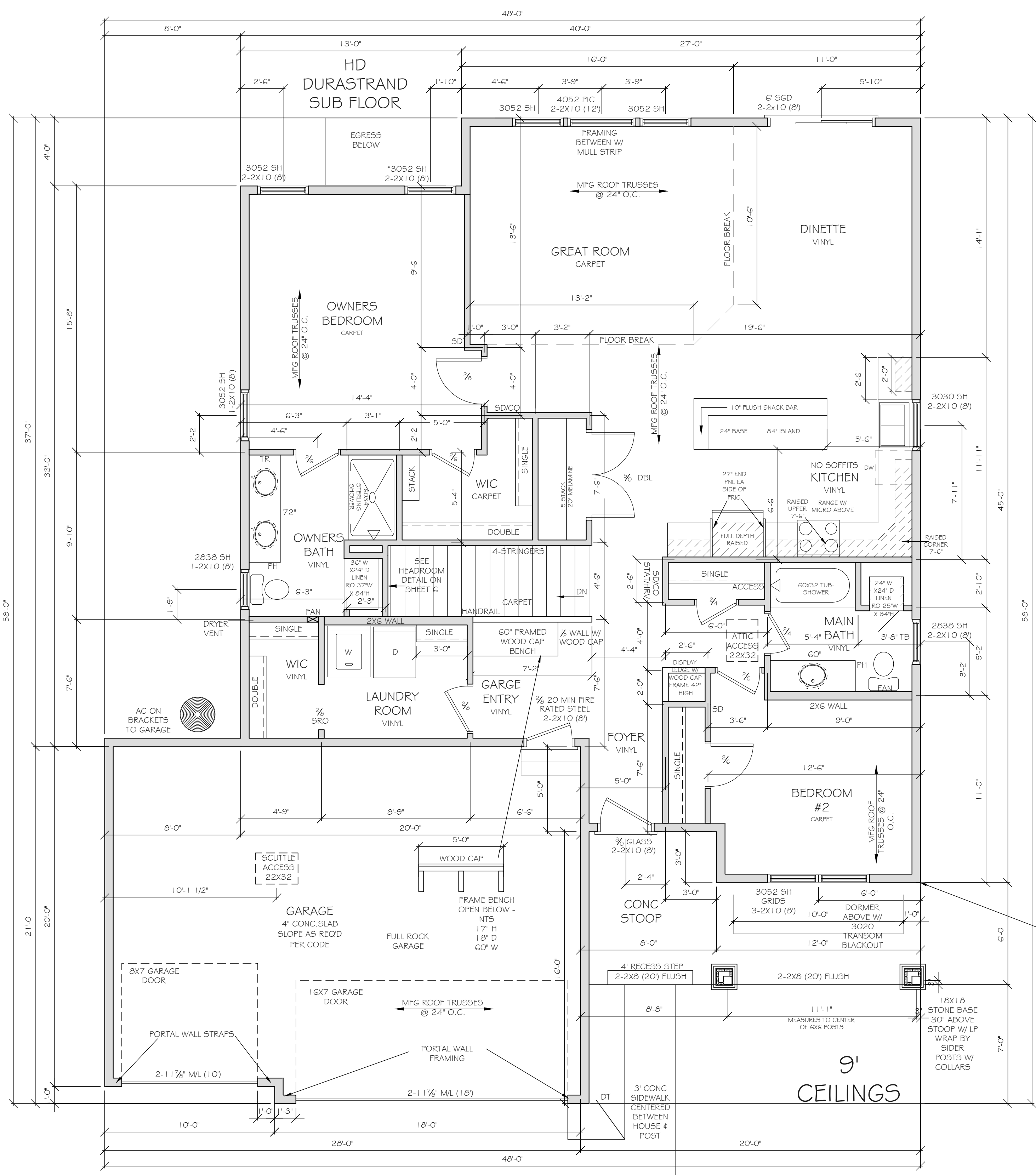
All changes after above date will be done according to F.F.H. Change Order Policy

Homeowner Signature

Agent:  
Plan: MAJESTIC  
Total Foundation: 2294  
House Foundation: 1564  
Finished: 2560  
Unfinished: 568

Scale: 1/4" = 1'-0"

Fin Sq Ft: 1564



FRAMER NOTES:  
-ALL WINDOWS/DOOR TO HAVE DOUBLE JACK STUDS  
-WINDOWS/DOORS LARGER THAN 8' TO HAVE DOUBLE KING STUDS

USE HOUSE WALL AS BEARING FOR ROOF TRUSSES - EXTEND HEELS