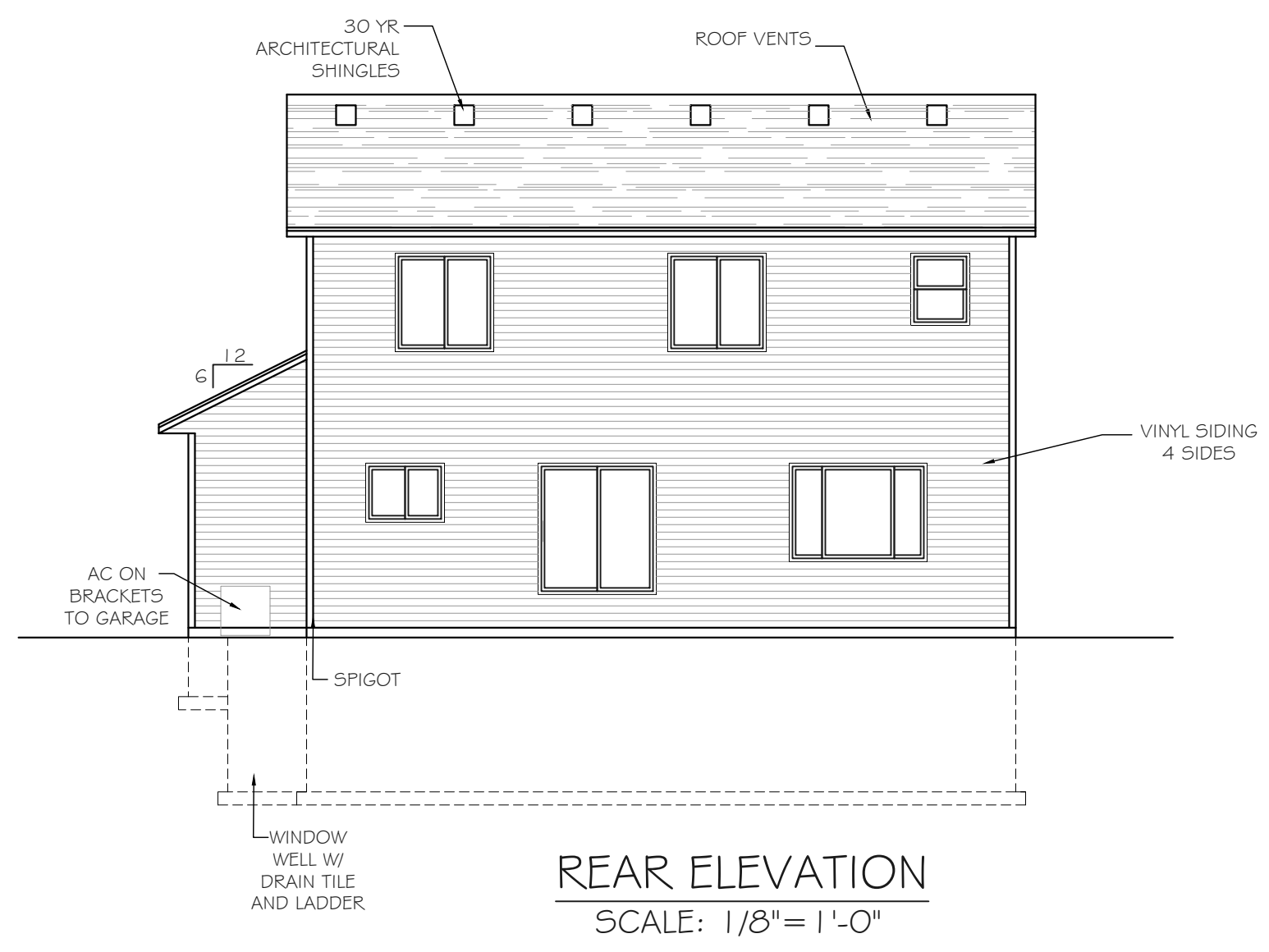
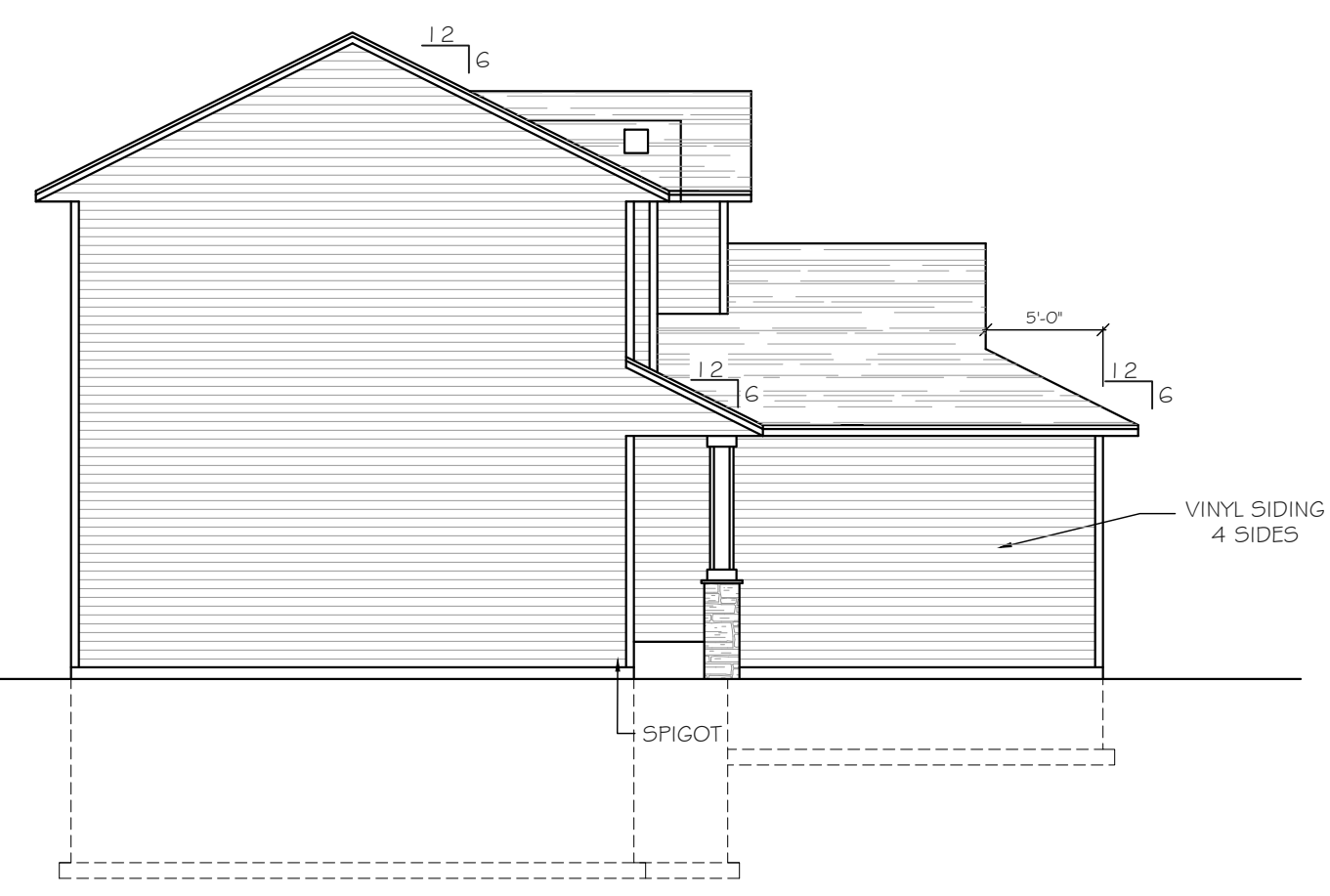


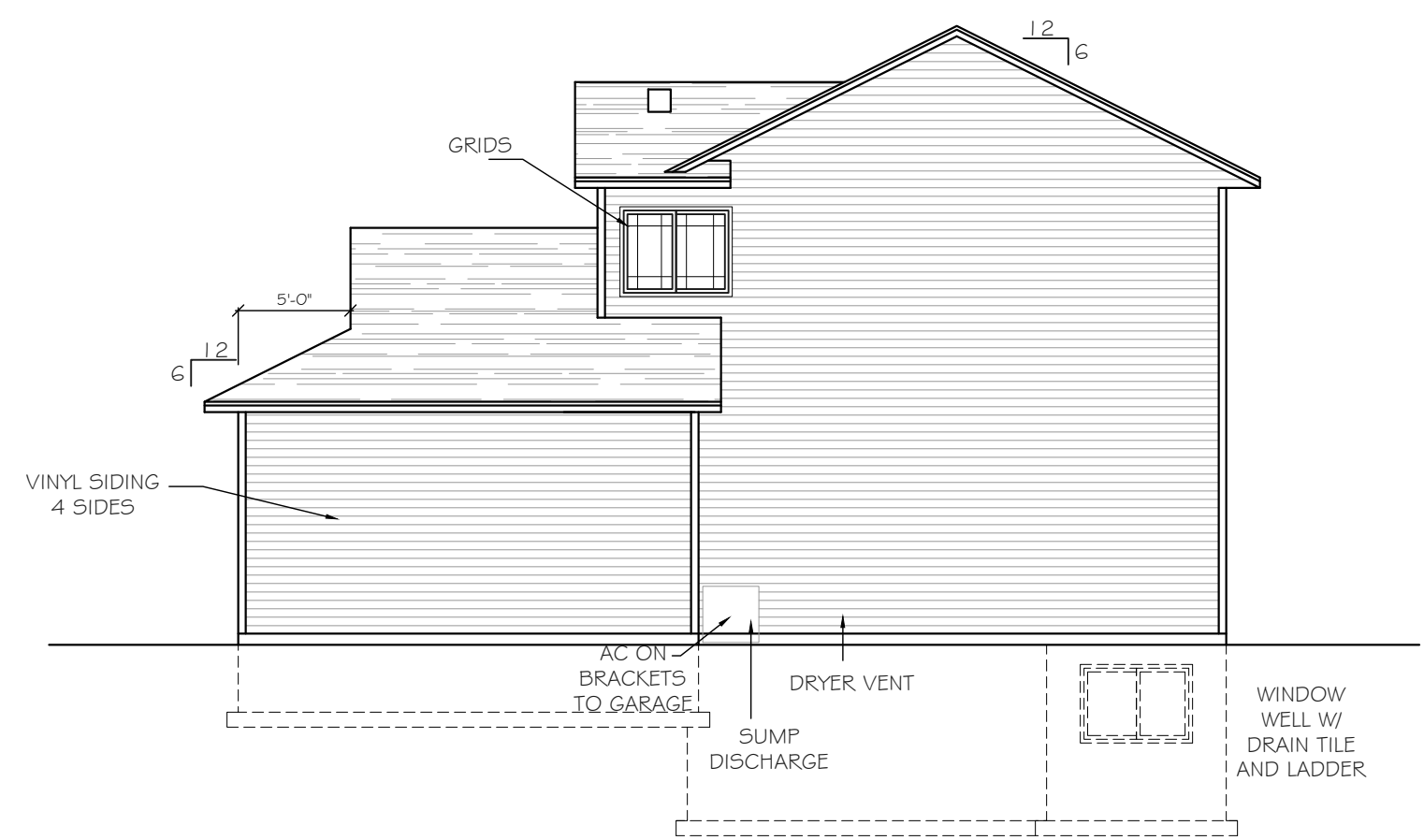
Intellectual property of Fieldstone Family Homes, Inc. © 2008. ALL RIGHTS RESERVED. These plan drawings, including but not limited to, all text, designs, renditions, floor plans, along with the selection and arrangement of thereof, are original copyrighted materials owned by Fieldstone Family Homes, Inc. These materials are protected by federal law against unauthorized copying, or reproduction by unauthorized persons and entities.
 MN LIC: BCG31164
 WI LIC: DC-070800080



REAR ELEVATION
 SCALE: 1/8" = 1'-0"



LEFT ELEVATION
 SCALE: 1/8" = 1'-0"



RIGHT ELEVATION
 SCALE: 1/8" = 1'-0"



FRONT ELEVATION
 SCALE: 1/8" = 1'-0"

CLIENT:
 Project:
 LOCATION:
 LOT _ BLK_ DEVELOPMENT
 Street
 CITY
 MN ZIP
 JOB #:

REVISION 1	
REVISION 2	
REVISION 3	
REVISION 4	
REVISION 5	
REVISION 6	
REVISION 7	
REVISION 8	
REVISION 9	
REVISION 10	
REVISION 11	
FINAL	2.28.23

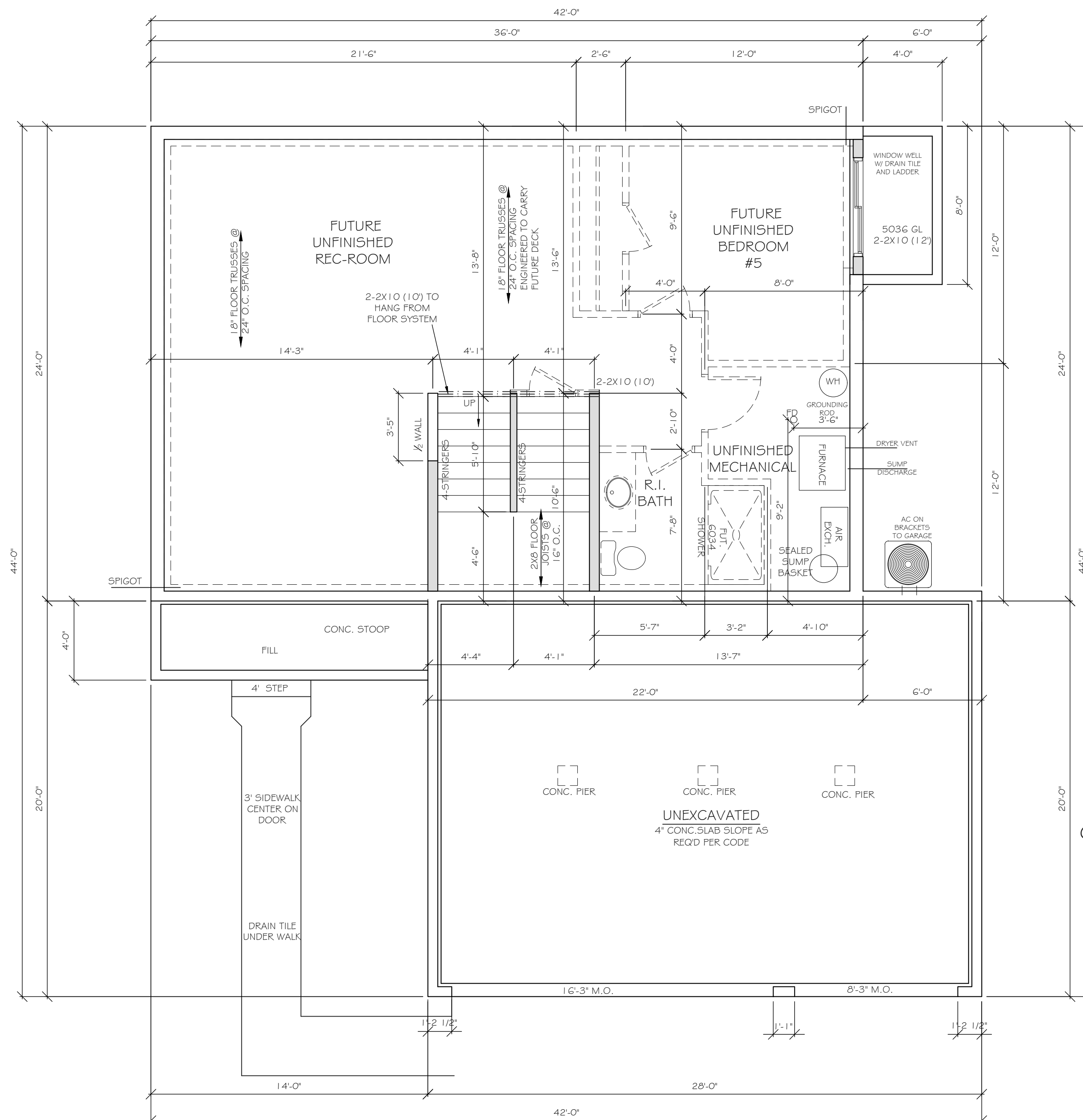
All changes after above date will be done according to F.F.H. Change Order Policy

Homeowner Signature

Agent:
 Plan: HAMMOND
 Total Foundation: 1524
 House Foundation: 864
 Finished: 1793
 Unfinished: 864

Scale: 1/4" = 1'-0"

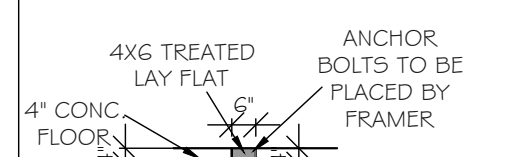
Fin Sq Ft: 1793



FRAMER NOTES:
 -ALL WINDOWS/DOOR TO HAVE DOUBLE JACK STUDS
 -WINDOWS/DOORS LARGER THAN 8' TO HAVE DOUBLE KING STUDS
 SEE PAGE 2 FOR ANCHOR BOLT LAYOUT FOR 16' TRD PLATE AND 1' SPLICES



FRAMER NOTE:
 INTERIOR CURB DETAIL FOR 2X4 BEARING WALL



FRAMER NOTE:
 INTERIOR CURB DETAIL FOR 2X6 BEARING WALL

Intellectual property of Fieldstone Family Homes, Inc. © 2008. ALL RIGHTS RESERVED. These plan drawings, including but not limited to, all text, designs, renditions, floor plans, along with the selection and arrangement of thereof, are original copyrighted materials owned by Fieldstone Family Homes, Inc. These materials are protected by federal law against unauthorized copying, or reproduction by unauthorized persons and entities.

MN LIC: BC631164
 WI LIC: DC-070800080

CLIENT:
 Project:

LOCATION:
 LOT _ BLK_ DEVELOPMENT
 Street
 CITY
 MN ZIP
 JOB #:

REVISION 1	
REVISION 2	
REVISION 3	
REVISION 4	
REVISION 5	
REVISION 6	
REVISION 7	
REVISION 8	
REVISION 9	
REVISION 10	
REVISION 11	
FINAL	2.28.23

All changes after above date will be done according to F.F.H. Change Order Policy

Homeowner Signature

Agent:
 Plan: HAMMOND
 Total Foundation: 1524
 House Foundation: 864
 Finished: 1793
 Unfinished: 864

Scale: 1/4" = 1'-0"

Fin Sq Ft:

Intellectual property of Fieldstone Family Homes, Inc. © 2008. ALL RIGHTS RESERVED. These plan drawings, including but not limited to, all text, designs, renditions, floor plans, along with the selection and arrangement of thereof, are original copyrighted materials owned by Fieldstone Family Homes, Inc. These materials are protected by federal law against unauthorized copying, or reproduction by unauthorized persons and entities.

MN LIC: BC631164
WI LIC: DC-070800080

CLIENT:

Project:

LOCATION:

LOT _ BLK_ DEVELOPMENT

Street

CITY

MN ZIP

JOB #:

REVISION 1	
REVISION 2	
REVISION 3	
REVISION 4	
REVISION 5	
REVISION 6	
REVISION 7	
REVISION 8	
REVISION 9	
REVISION 10	
REVISION 11	
FINAL	2.28.23

All changes after above date will be done according to F.F.H. Change Order Policy

Homeowner Signature

Agent:

Plan: HAMMOND

Total Foundation: 1524

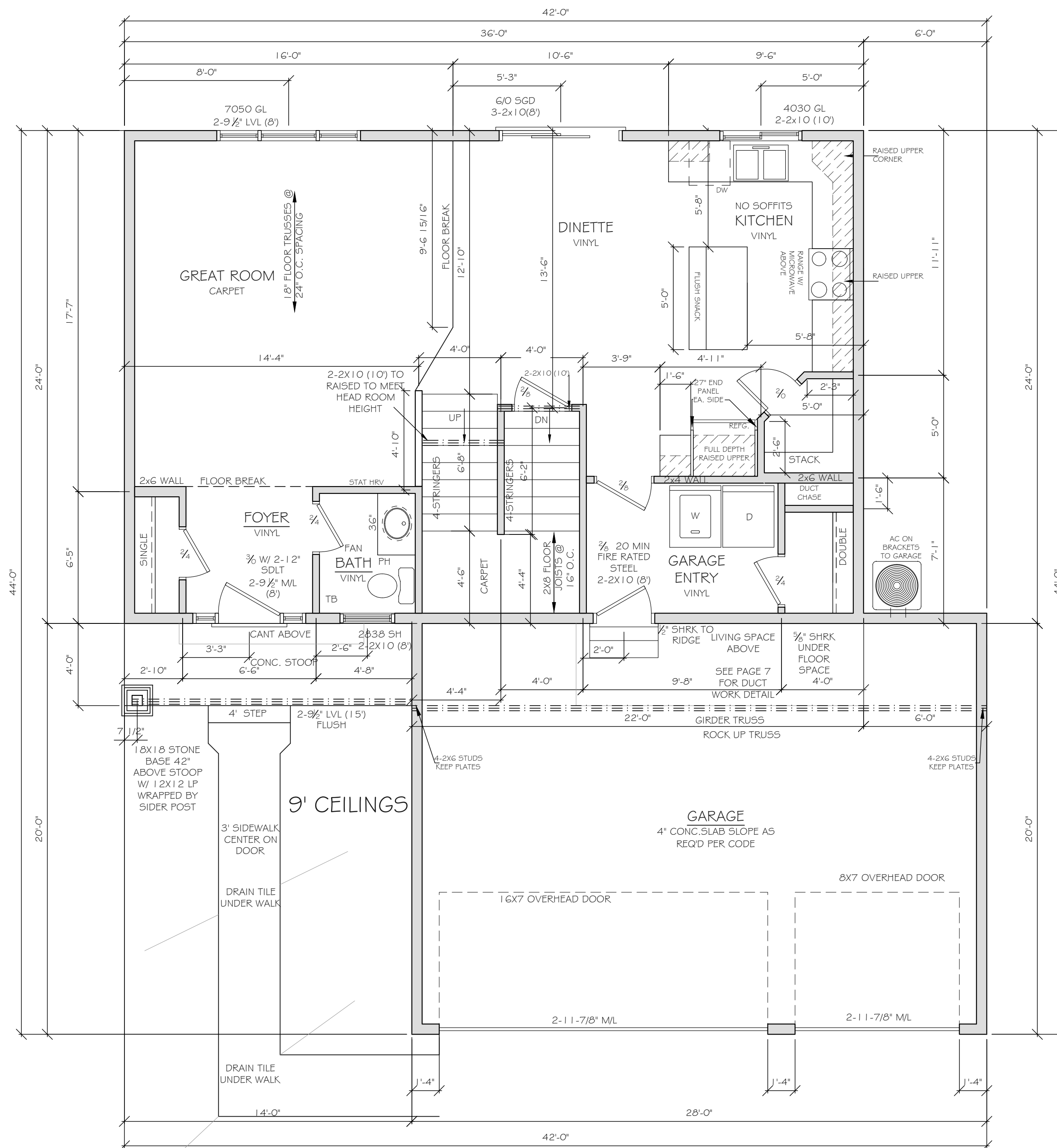
House Foundation: 864

Finished: 1793

Unfinished: 864

Scale: 1/4" = 1'-0"

Fin Sq Ft: 864



Intellectual property of Fieldstone Family Homes, Inc. © 2008. ALL RIGHTS RESERVED. These plan drawings, including but not limited to, all text, designs, renditions, floor plans, along with the selection and arrangement of thereof, are original copyrighted materials owned by Fieldstone Family Homes, Inc. These materials are protected by federal law against unauthorized copying, or reproduction by unauthorized persons and entities.

MN LIC: BC631164
WI LIC: DC-070800080

CLIENT:
Project:

LOCATION:

LOT _ BLK_ DEVELOPMENT

Street
CITY
MN ZIP
JOB #:

REVISION 1	
REVISION 2	
REVISION 3	
REVISION 4	
REVISION 5	
REVISION 6	
REVISION 7	
REVISION 8	
REVISION 9	
REVISION 10	
REVISION 11	
FINAL	2.28.23

All changes after above date will be done according to F.F.H. Change Order Policy

Homeowner
Signature

Agent:
Plan: HAMMOND
Total Foundation: 1524
House Foundation: 864
Finished: 1793
Unfinished: 864

Scale: 1/4" = 1'-0"

Fin Sq Ft: 929

