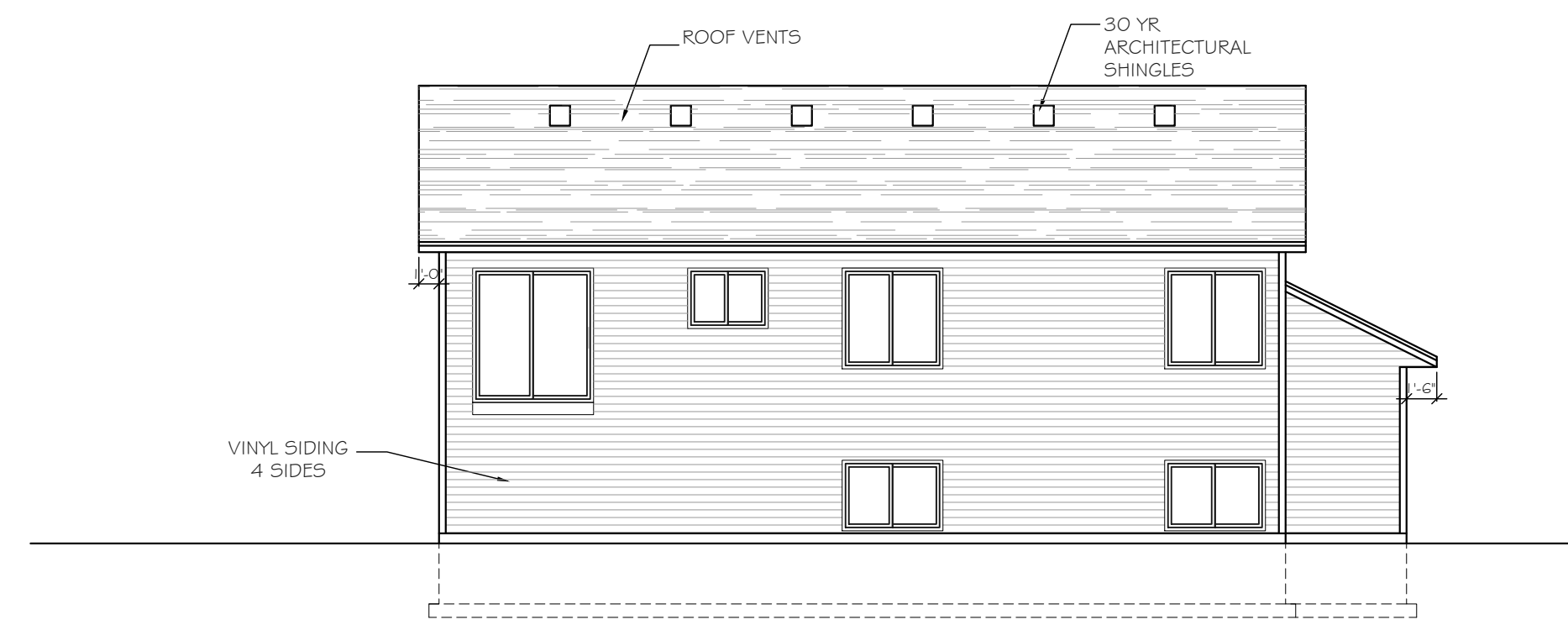
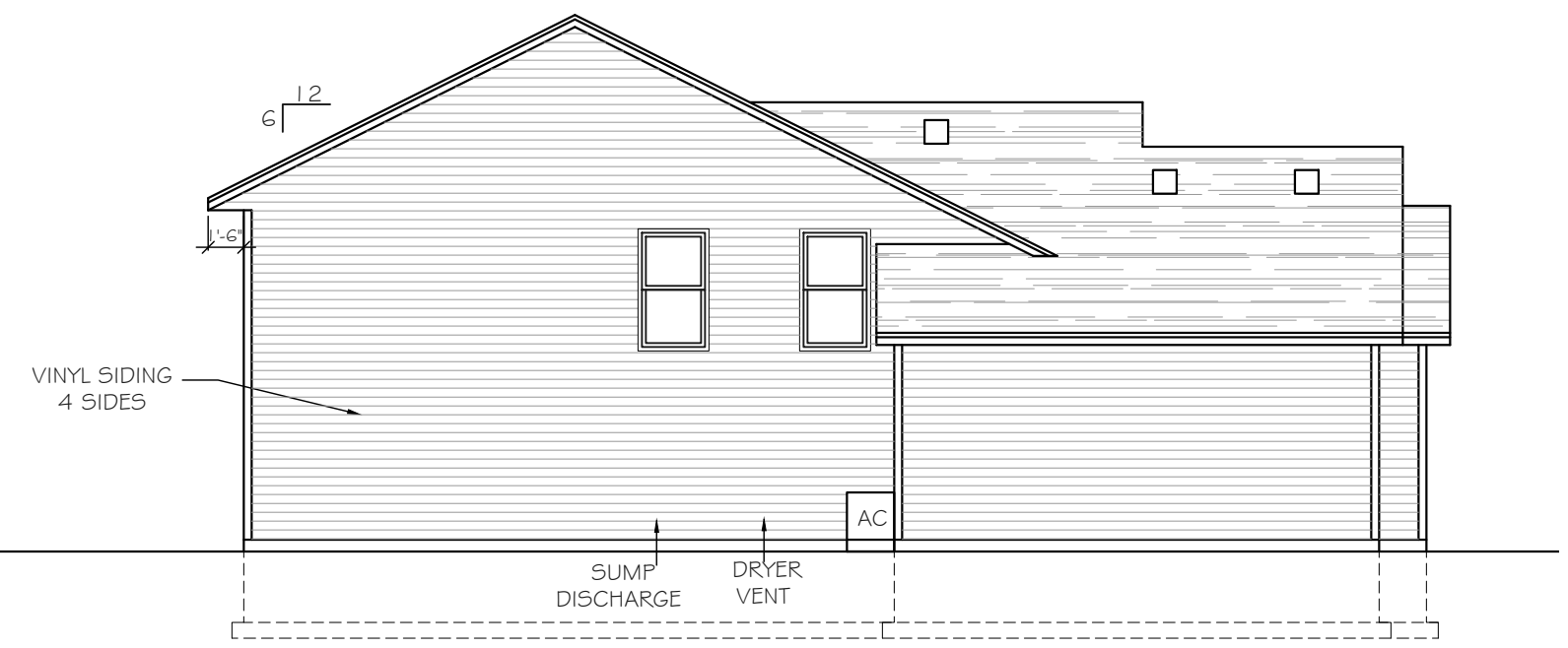


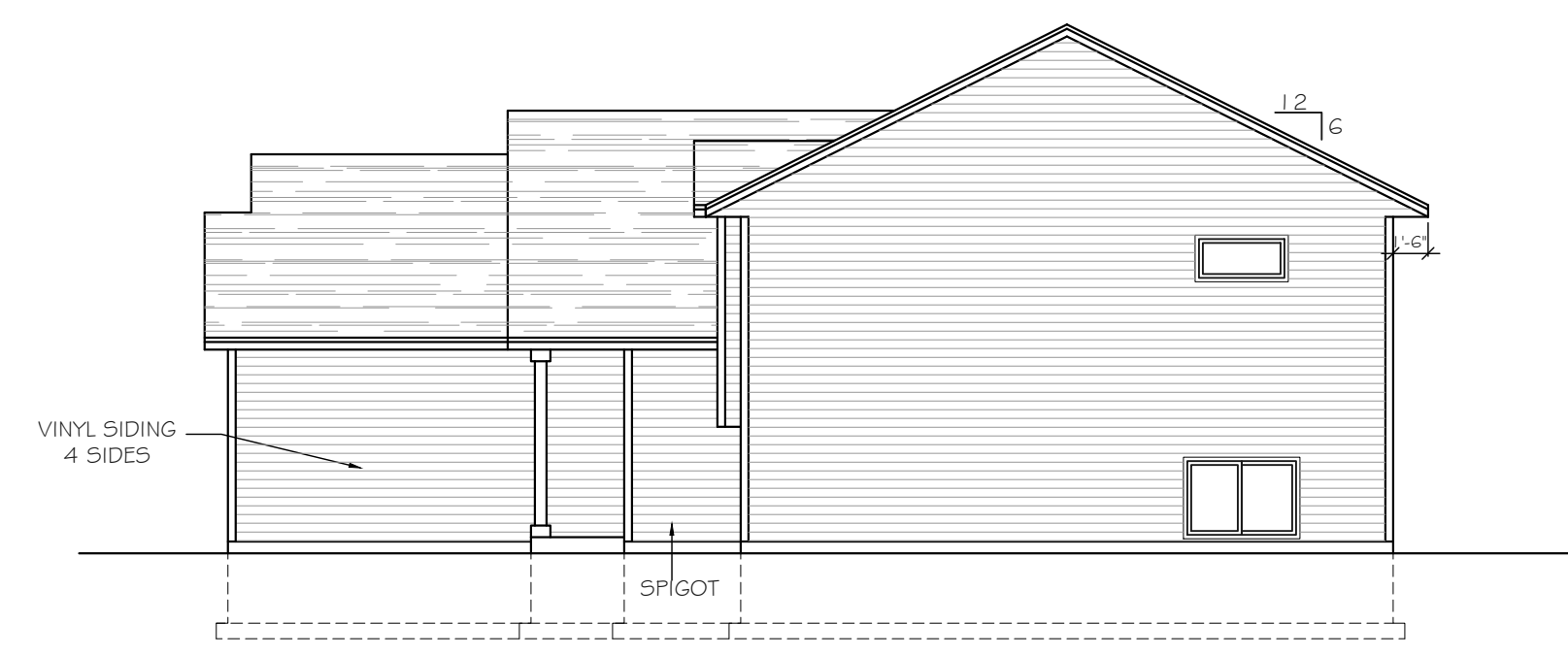
Intellectual property of Fieldstone Family Homes, Inc. © 2008. ALL RIGHTS RESERVED. These plan drawings, including but not limited to, all text, designs, renditions, floor plans, along with the selection and arrangement of thereof, are original copyrighted materials owned by Fieldstone Family Homes, Inc. These materials are protected by federal law against unauthorized copying, or reproduction by unauthorized persons and entities.  
 MN LIC: BCG31164  
 WI LIC: DC-070800080



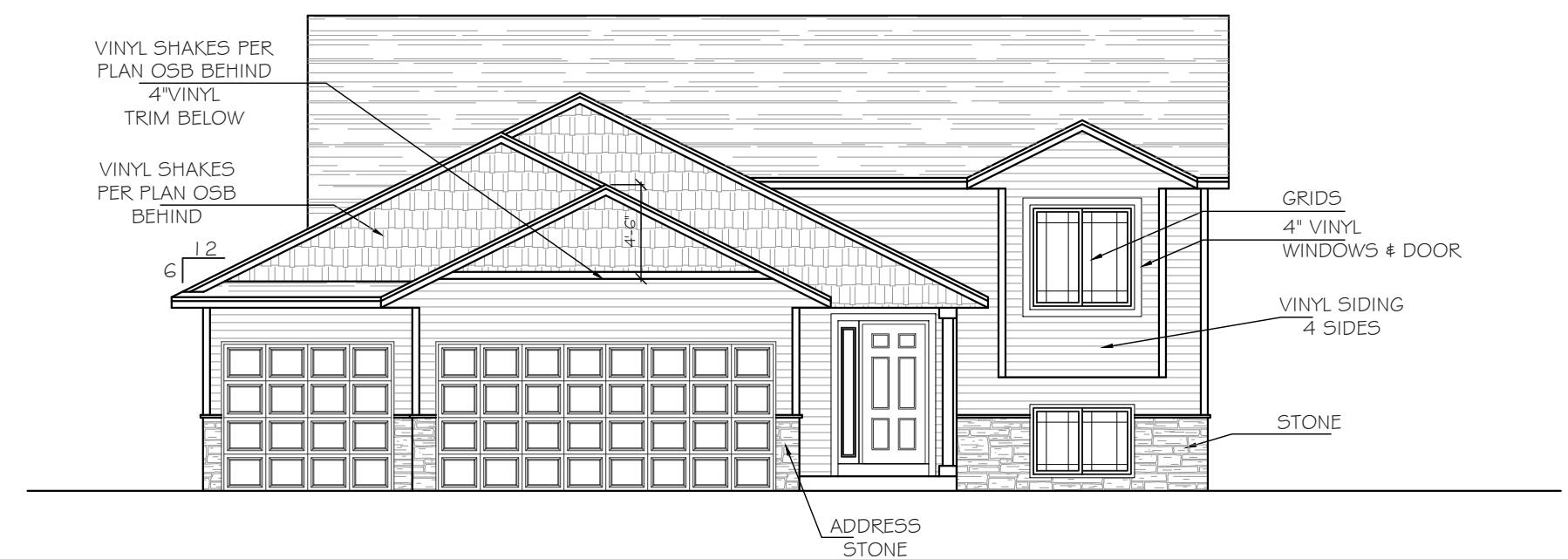
REAR ELEVATION  
 SCALE: 1/8" = 1'-0"



LEFT ELEVATION  
 SCALE: 1/8" = 1'-0"



RIGHT ELEVATION  
 SCALE: 1/8" = 1'-0"



FRONT ELEVATION  
 SCALE: 1/8" = 1'-0"

CLIENT:  
 Project:

LOCATION:  
 LOT \_ BLK\_ DEVELOPMENT  
 Street  
 CITY  
 MN ZIP  
 JOB #:

REVISION 1	
REVISION 2	
REVISION 3	
REVISION 4	
REVISION 5	
REVISION 6	
REVISION 7	
REVISION 8	
REVISION 9	
REVISION 10	
REVISION 11	
FINAL	2.28.23

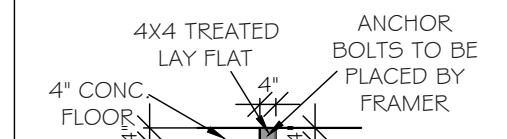
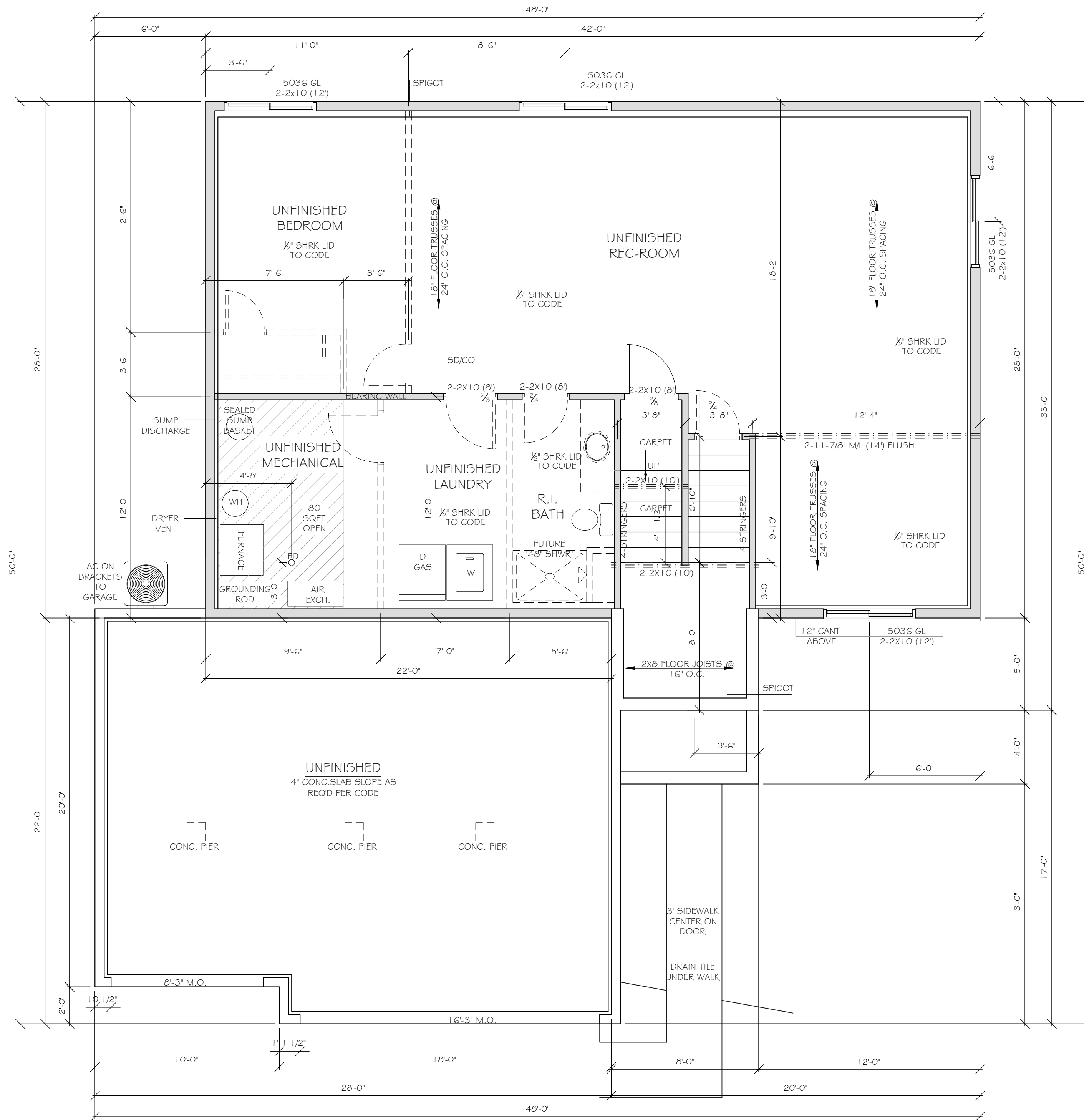
All changes after above date will be done according to F.F.H. Change Order Policy

Homeowner Signature

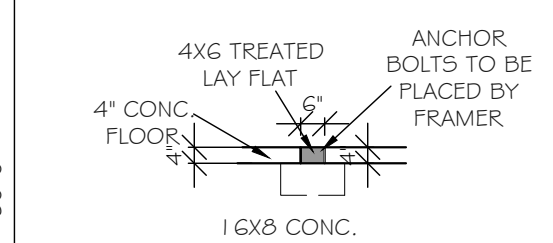
Agent:  
 Plan: GARRISON  
 Total Foundation: 1854  
 House Foundation: 1216  
 Finished: 1244  
 Unfinished: 1196

Scale: 1/4" = 1'-0"

Fin Sq Ft: 1244



**FRAMER NOTE:**  
**INTERIOR**  
**CURB DETAIL FOR 2X4**  
**BEARING WALL**



**FRAMER NOTE:**  
**INTERIOR**  
**CURB DETAIL FOR 2X6**  
**BEARING WALL**

Intellectual property of Fieldstone Family Homes, Inc. © 2008. ALL RIGHTS RESERVED. These plan drawings, including but not limited to, all text, designs, renditions, floor plans, along with the selection and arrangement of thereof, are original copyrighted materials owned by Fieldstone Family Homes, Inc. These materials are protected by federal law against unauthorized copying, or reproduction by unauthorized persons and entities.

MN LIC: BC631164  
 WI LIC: DC-070800080

CLIENT:  
 Project:

LOCATION:  
 LOT \_ BLK\_ DEVELOPMENT

Street  
 CITY  
 MN ZIP  
 JOB #:

REVISION 1	
REVISION 2	
REVISION 3	
REVISION 4	
REVISION 5	
REVISION 6	
REVISION 7	
REVISION 8	
REVISION 9	
REVISION 10	
REVISION 11	
FINAL	2.28.23

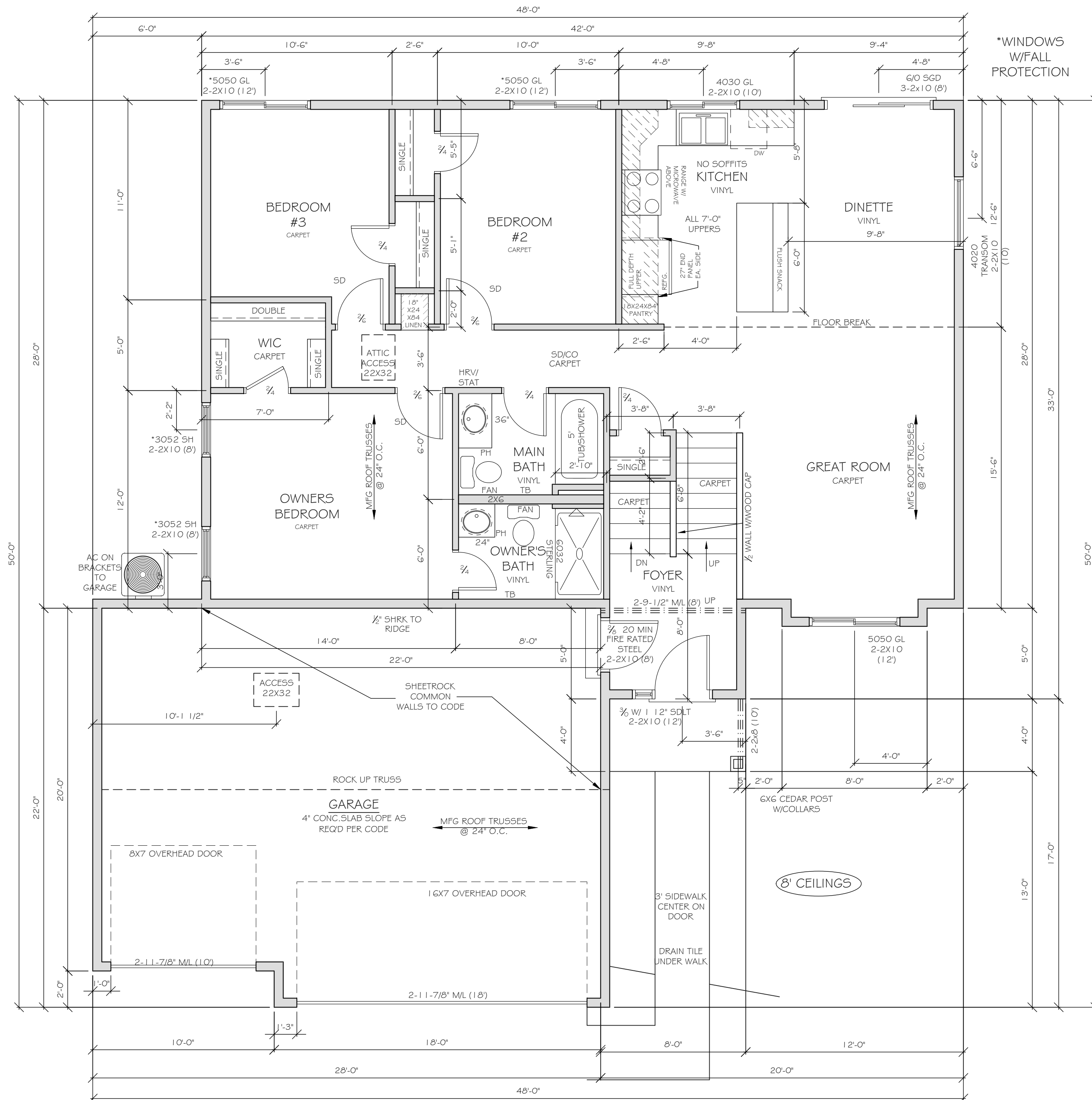
All changes after above date will be done according to F.F.H. Change Order Policy

Homeowner Signature

Agent:  
 Plan: GARRISON  
 Total Foundation: 1854  
 House Foundation: 1216  
 Finished: 1244  
 Unfinished: 1196

Scale: 1/4" = 1'-0"

Fin Sq Ft: 20



\*WINDOWS W/FALL PROTECTION

Intellectual property of Fieldstone Family Homes, Inc. © 2008. ALL RIGHTS RESERVED. These plan drawings, including but not limited to, all text, designs, renditions, floor plans, along with the selection and arrangement of thereof, are original copyrighted materials owned by Fieldstone Family Homes, Inc. These materials are protected by federal law against unauthorized copying, or reproduction by unauthorized persons and entities.  
 MN LIC: BCG31164  
 WI LIC: DC-070800080

CLIENT:  
 Project:

LOCATION:  
 LOT \_ BLK\_ DEVELOPMENT  
 Street  
 CITY  
 MN ZIP  
 JOB #:

REVISION 1	
REVISION 2	
REVISION 3	
REVISION 4	
REVISION 5	
REVISION 6	
REVISION 7	
REVISION 8	
REVISION 9	
REVISION 10	
REVISION 11	
FINAL	2.28.23

All changes after above date will be done according to F.F.H. Change Order Policy

Homeowner Signature

Agent:  
 Plan: GARRISON  
 Total Foundation: 1854  
 House Foundation: 1216  
 Finished: 1244  
 Unfinished: 1196

Scale: 1/4" = 1'-0"

Fin Sq Ft: 1224