

Intellectual property of Fieldstone Family Homes, Inc. © 2008. ALL RIGHTS RESERVED. These plan drawings, including but not limited to, all text, designs, renditions, floor plans, along with the selection and arrangement of thereof, are original copyrighted materials owned by Fieldstone Family Homes, Inc. These materials are protected by federal law against unauthorized copying, or reproduction by unauthorized persons and entities.

MN LIC: BCG31164
WI LIC: DC-070800080

CLIENT:
Project:

LOCATION:
LOT_BLK_DEVELOPMENT

Street
CITY
MN ZIP
JOB #:

REVISION 1	
REVISION 2	
REVISION 3	
REVISION 4	
REVISION 5	
REVISION 6	
REVISION 7	
REVISION 8	
REVISION 9	
REVISION 10	
REVISION 11	
FINAL	2.28.23

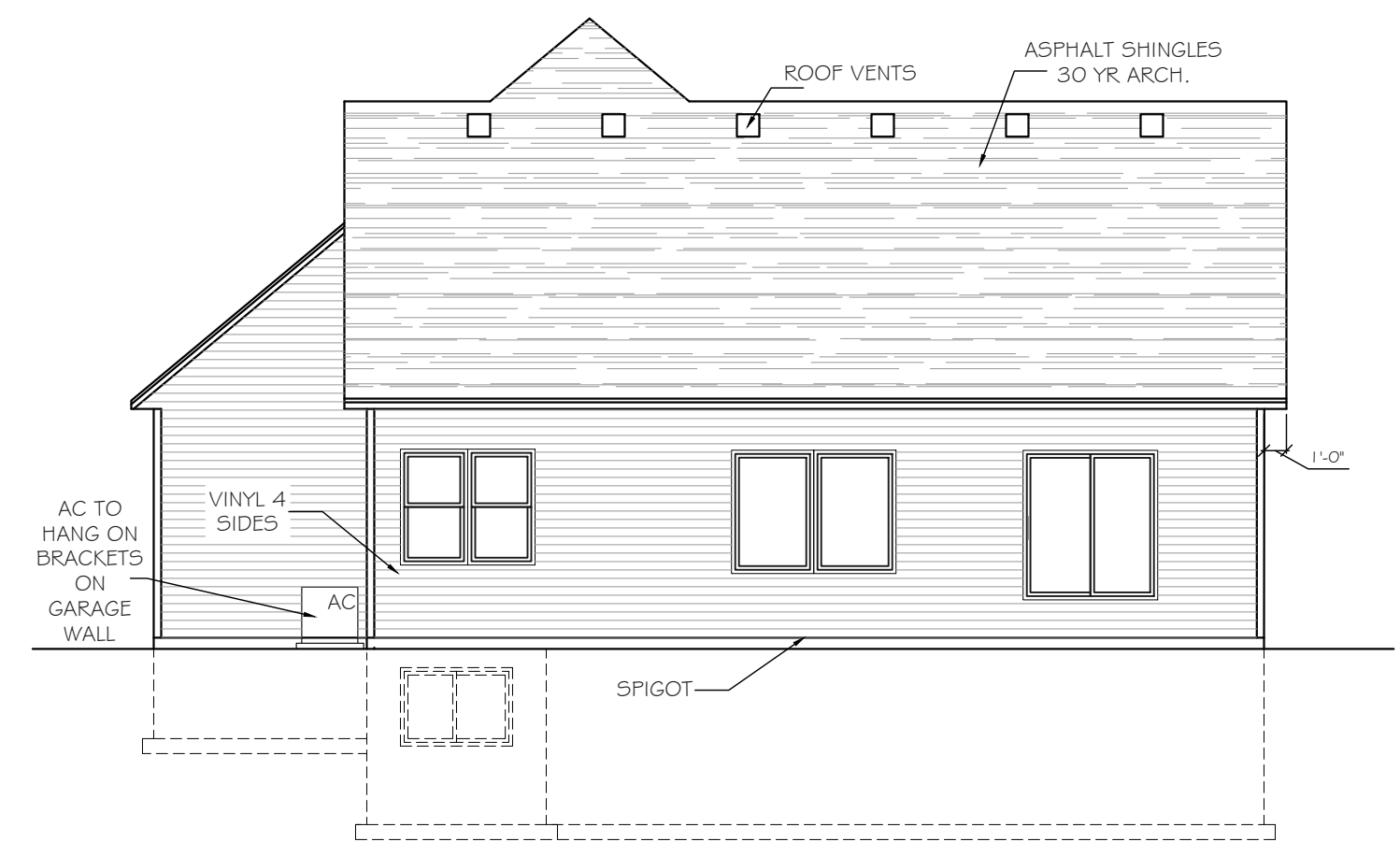
All changes after above date will be done according to F.F.H. Change Order Policy

Homeowner Signature

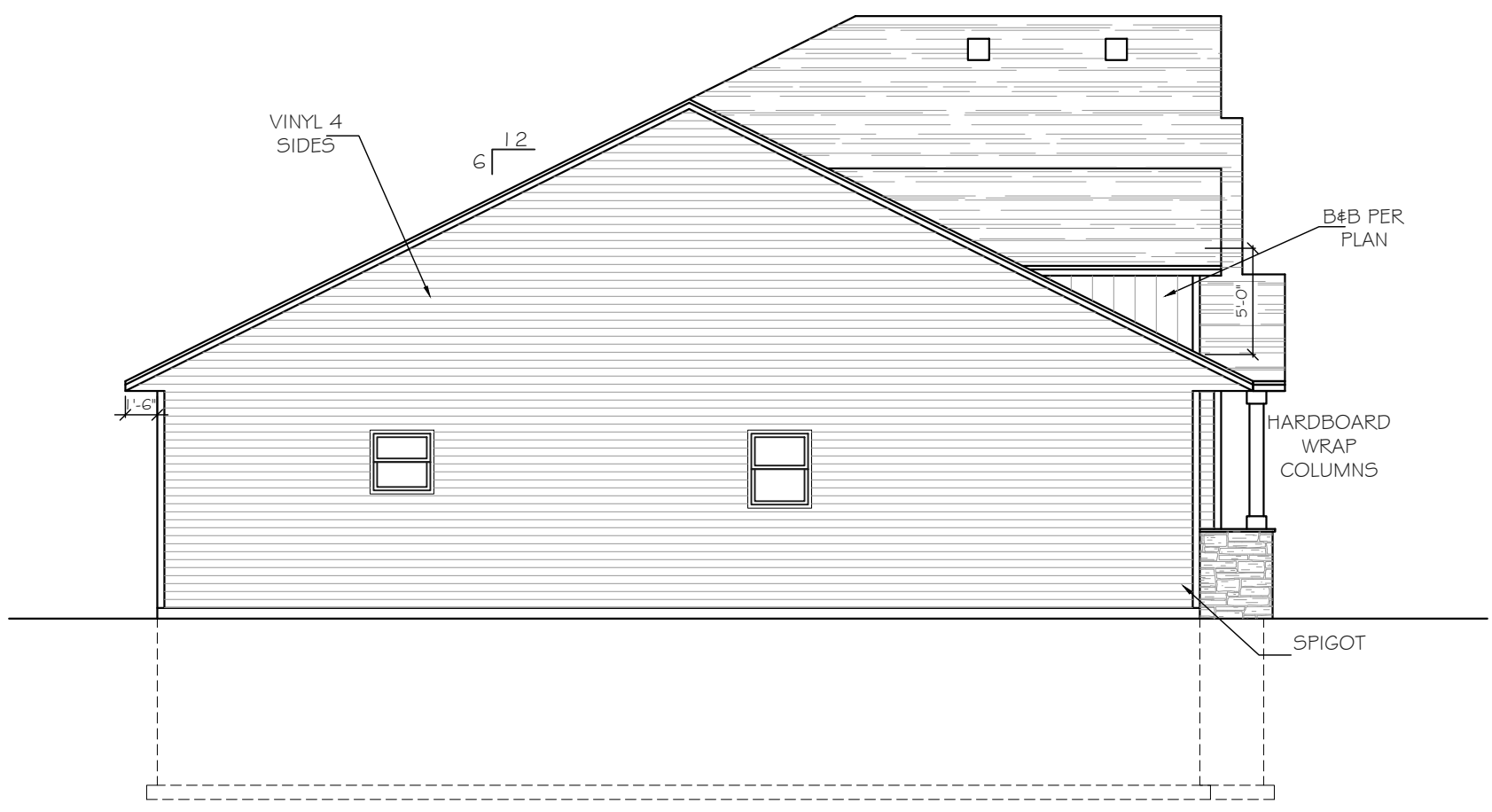
Agent:
Plan: Fairhaven
Total Foundation: 2217
House Foundation: 1515
Finished: 2430
Unfinished: 594

Scale: 1/4" = 1'-0"

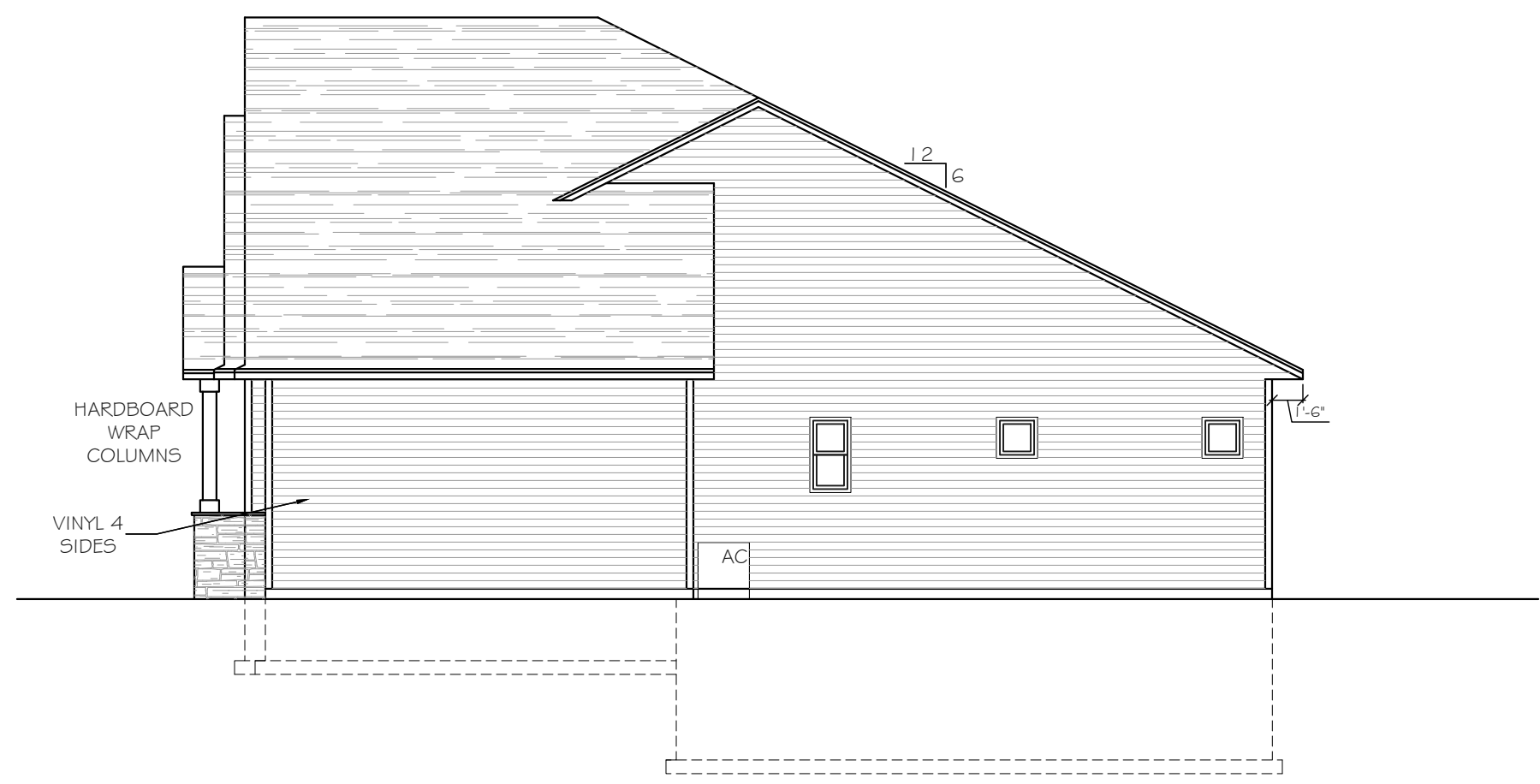
Fin Sq Ft: 2430



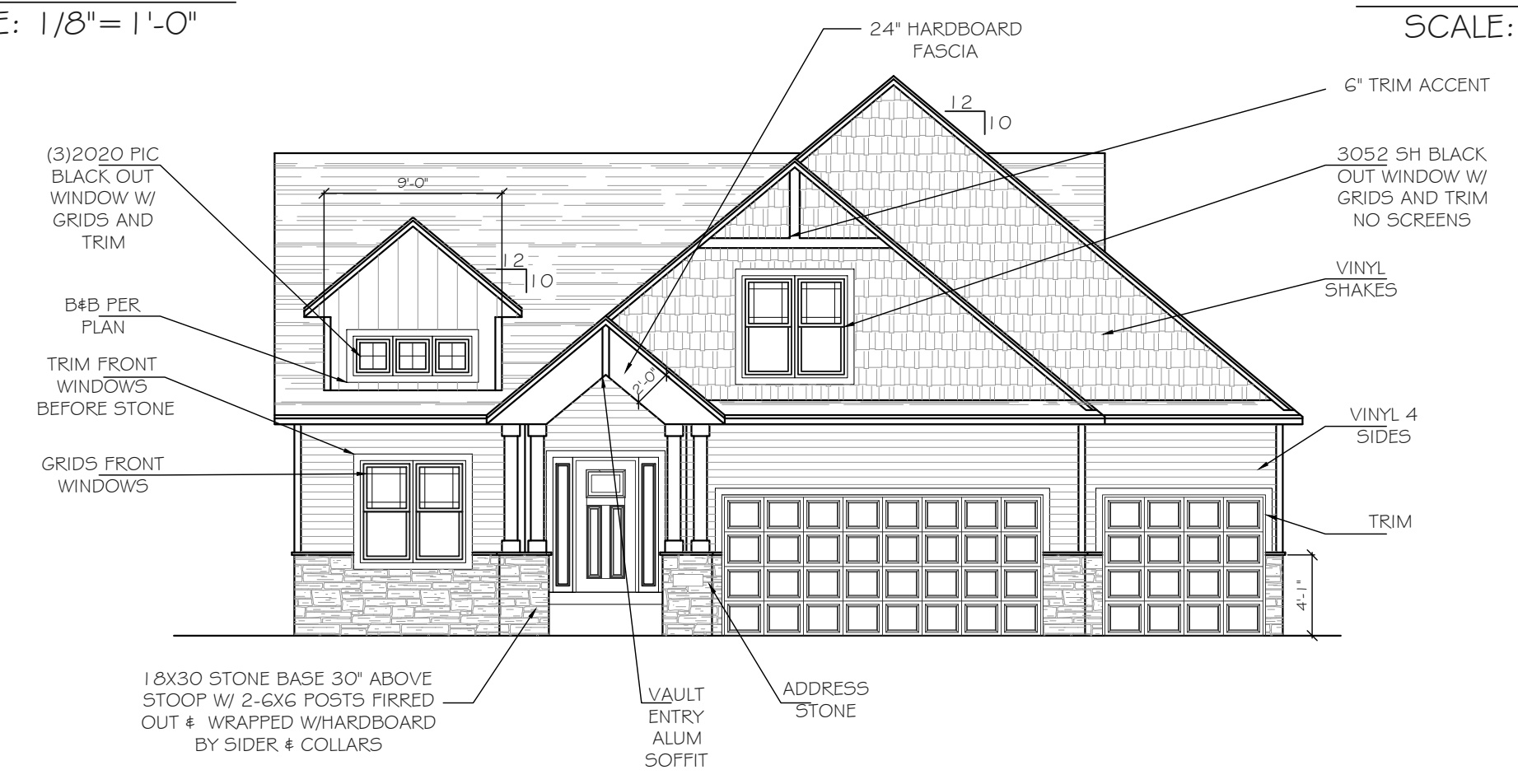
REAR ELEVATION
SCALE: 1/8" = 1'-0"



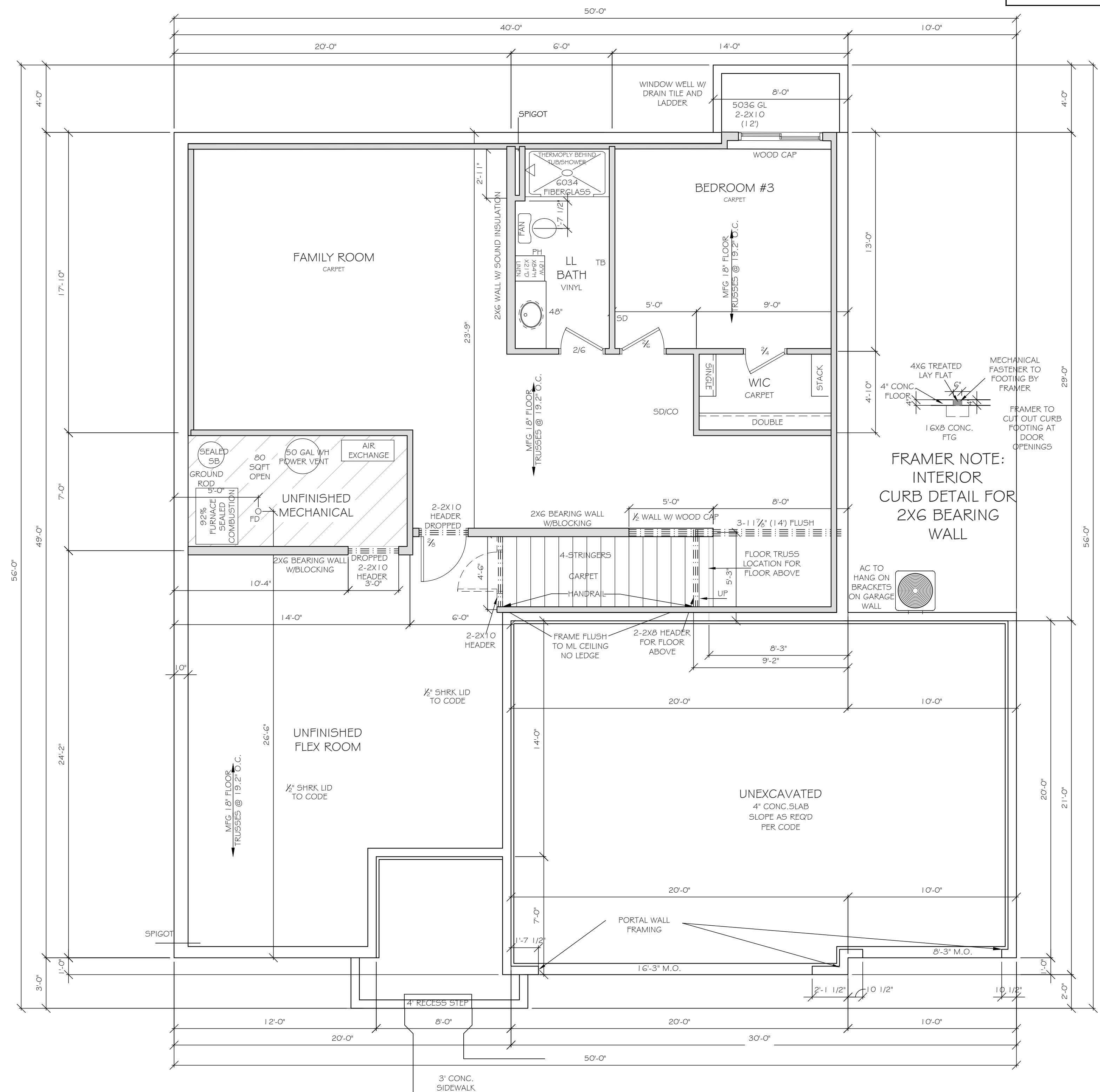
LEFT ELEVATION
SCALE: 1/8" = 1'-0"



RIGHT ELEVATION
SCALE: 1/8" = 1'-0"



FRONT ELEVATION
SCALE: 1/8" = 1'-0"



Intellectual property of Fieldstone Family Homes, Inc. © 2008. ALL RIGHTS RESERVED. These plan drawings, including but not limited to, all text, designs, renditions, floor plans, along with the selection and arrangement of thereof, are original copyrighted materials owned by Fieldstone Family Homes, Inc. These materials are protected by federal law against unauthorized copying, or reproduction by unauthorized persons and entities.

MN LIC: BC631164
WI LIC: DC-070800080

CLIENT:
Project:

LOCATION:
LOT _ BLK_ DEVELOPMENT

Street
CITY MN ZIP
JOB #:

REVISION 1	
REVISION 2	
REVISION 3	
REVISION 4	
REVISION 5	
REVISION 6	
REVISION 7	
REVISION 8	
REVISION 9	
REVISION 10	
REVISION 11	
FINAL	2.28.23

All changes after above date will be done according to F.F.H. Change Order Policy

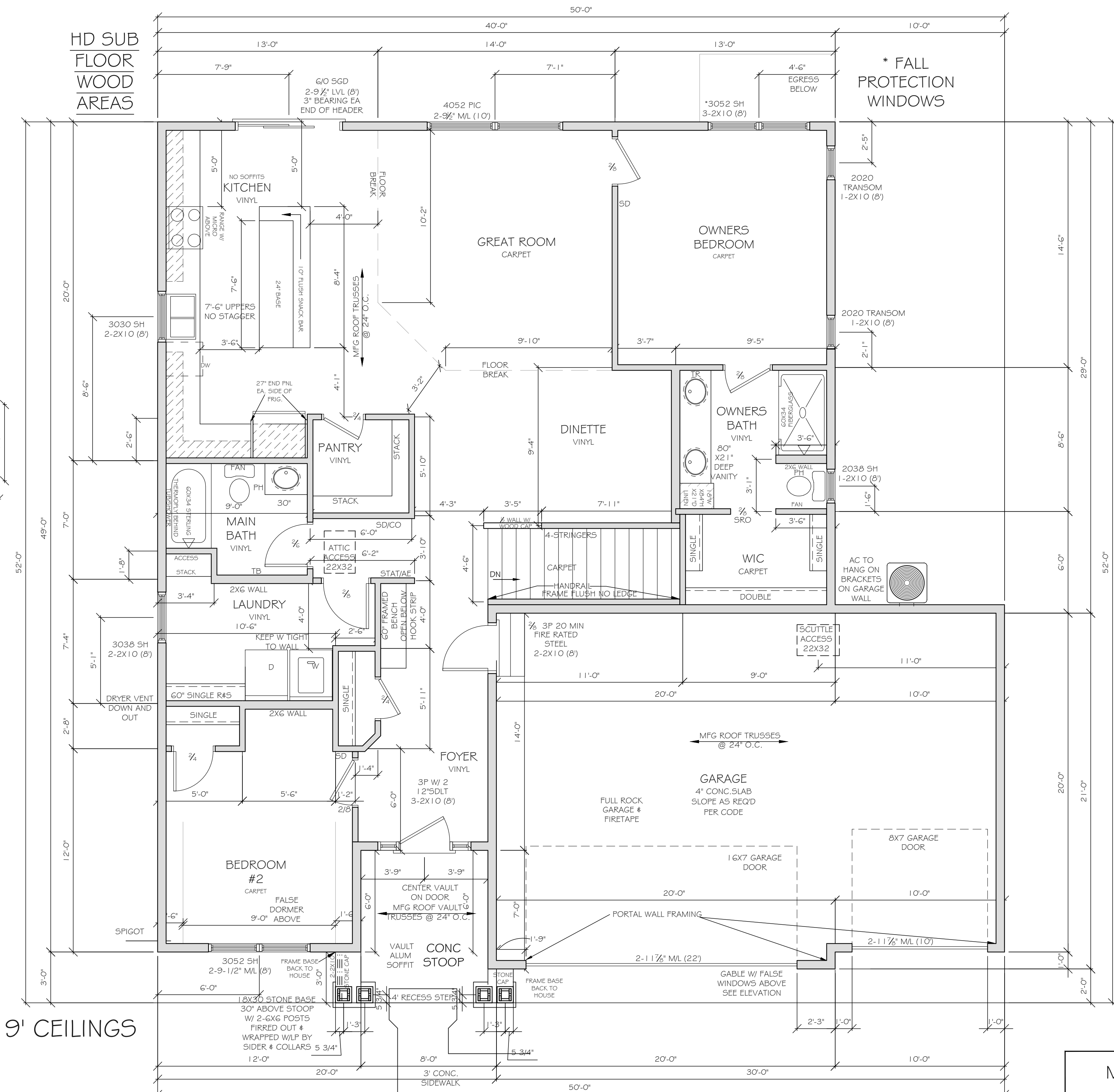
Homeowner Signature

Agent:
Plan: Fairhaven
Total Foundation: 2217
House Foundation: 1515
Finished: 2430
Unfinished: 594

Scale: 1/4" = 1'-0"

Fin Sq Ft: 918

Intellectual property of Fieldstone Family Homes, Inc. © 2008. ALL RIGHTS RESERVED. These plan drawings, including but not limited to, all text, designs, renditions, floor plans, along with the selection and arrangement of thereof, are original copyrighted materials owned by Fieldstone Family Homes, Inc. These materials are protected by federal law against unauthorized copying, or reproduction by unauthorized persons and entities.
 MN LIC: BCG31164
 WI LIC: DC-070800080



CLIENT:
 Project:

LOCATION:
 LOT_BLK_ DEVELOPMENT

Street
 CITY
 MN ZIP
 JOB #:

REVISION 1	
REVISION 2	
REVISION 3	
REVISION 4	
REVISION 5	
REVISION 6	
REVISION 7	
REVISION 8	
REVISION 9	
REVISION 10	
REVISION 11	
FINAL	2.28.23

All changes after above date will be done according to F.F.H. Change Order Policy

Homeowner Signature

Agent:
 Plan: Fairhaven
 Total Foundation: 2217
 House Foundation: 1515
 Finished: 2430
 Unfinished: 594

Scale: 1/4" = 1'-0"

Fin Sq Ft: 1512