

Intellectual property of Fieldstone Family Homes, Inc. © 2008. ALL RIGHTS RESERVED. These plan drawings, including but not limited to, all text, designs, renditions, floor plans, along with the selection and arrangement of thereof, are original copyrighted materials owned by Fieldstone Family Homes, Inc. These materials are protected by federal law against unauthorized copying, or reproduction by unauthorized persons and entities.

MN LIC: BCG31164
WI LIC: DC-070800080

CLIENT:
Project:

LOCATION:
LOT _ BLK _
DEVELOPMENT

Street
CITY
MN ZIP
JOB #:

REVISION 1	
REVISION 2	
REVISION 3	
REVISION 4	
REVISION 5	
REVISION 6	
REVISION 7	
REVISION 8	
REVISION 9	
REVISION 10	
REVISION 11	
FINAL	2.28.23

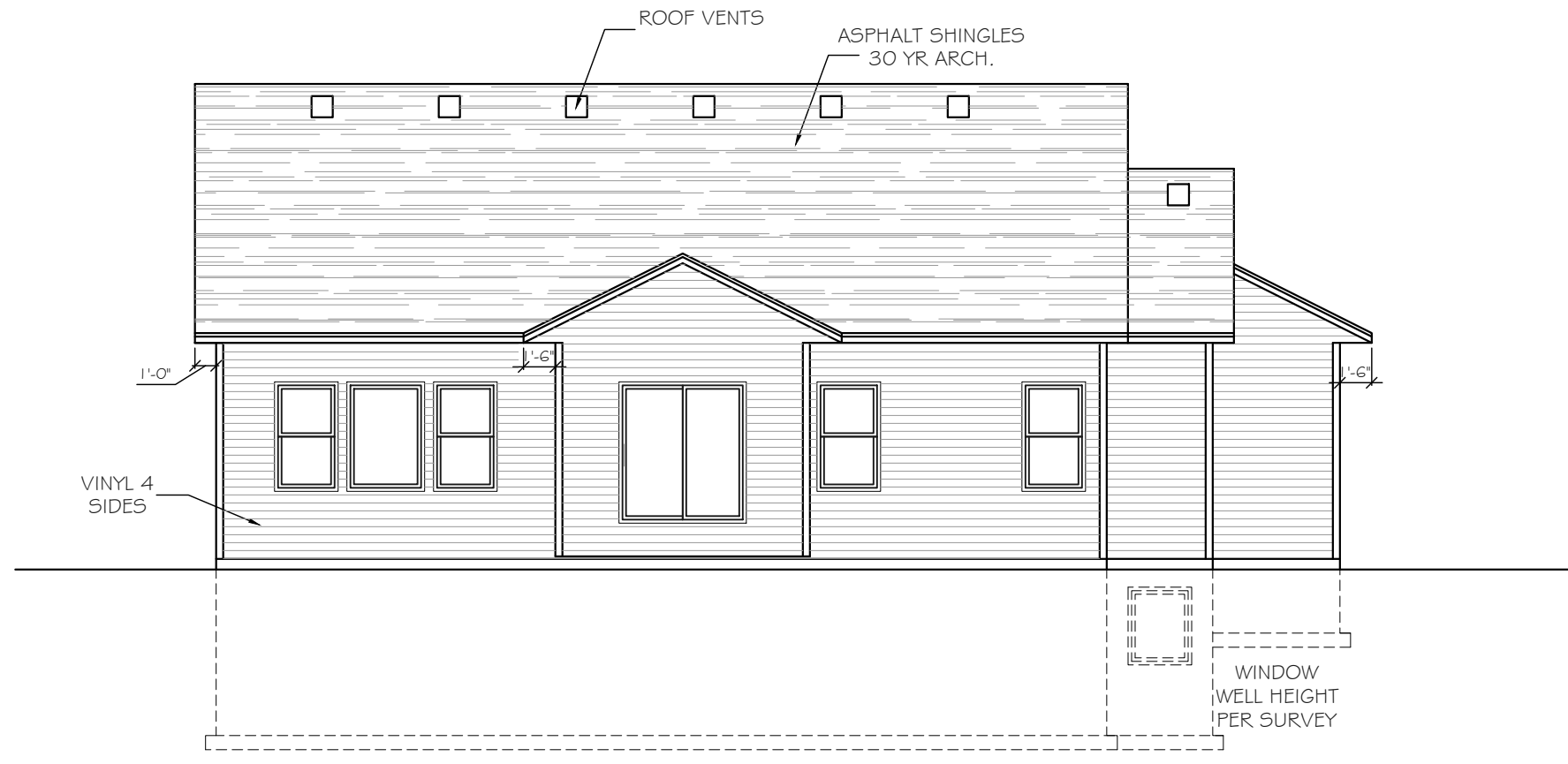
All changes after above date will be done according to F.F.H. Change Order Policy

Homeowner Signature

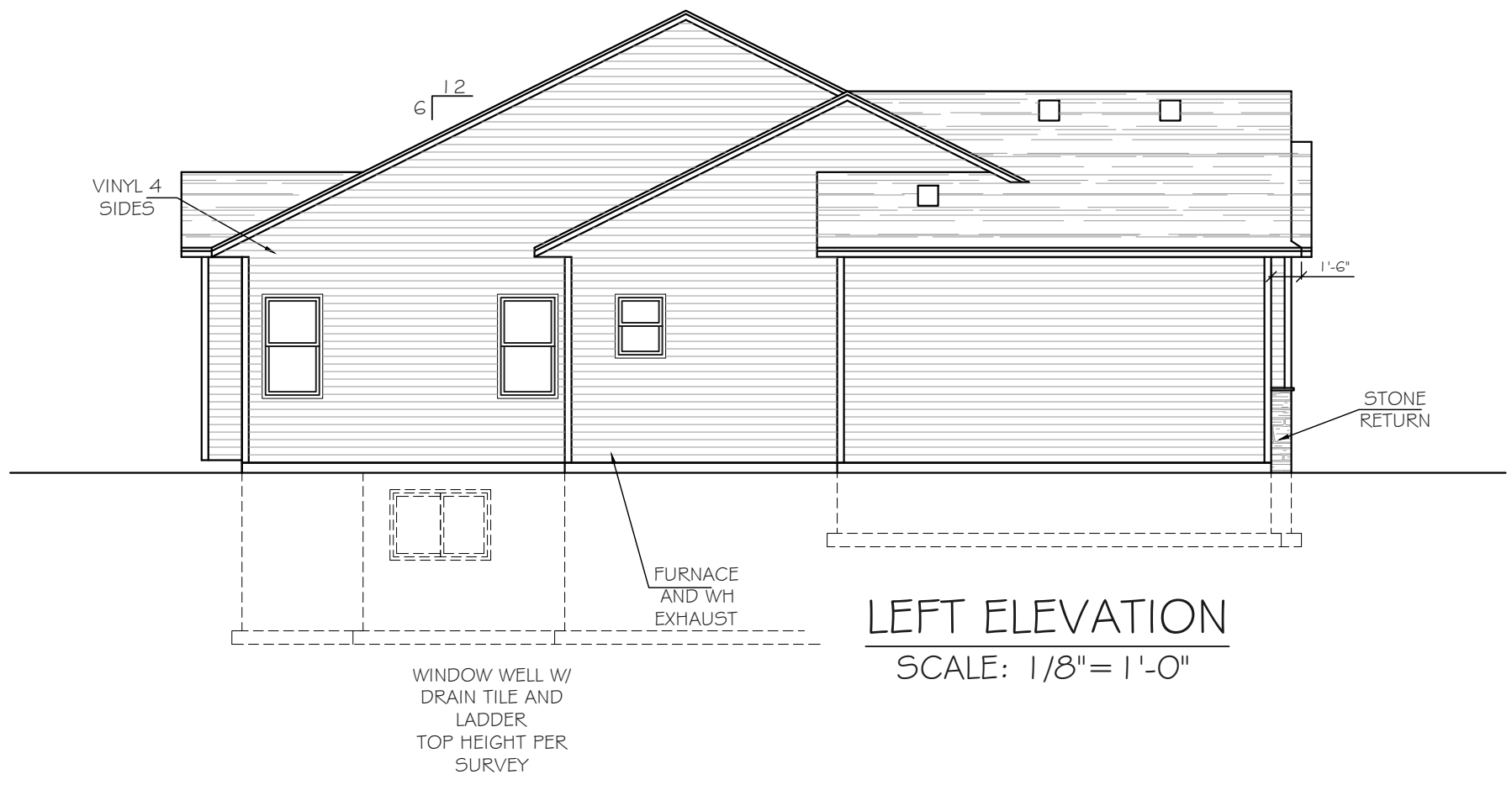
Agent:
Plan: EVERLEIGH
Total Foundation: 2297
House Foundation: 1611
Finished: 2746
Unfinished: 500

Scale: 1/8" = 1'-0"

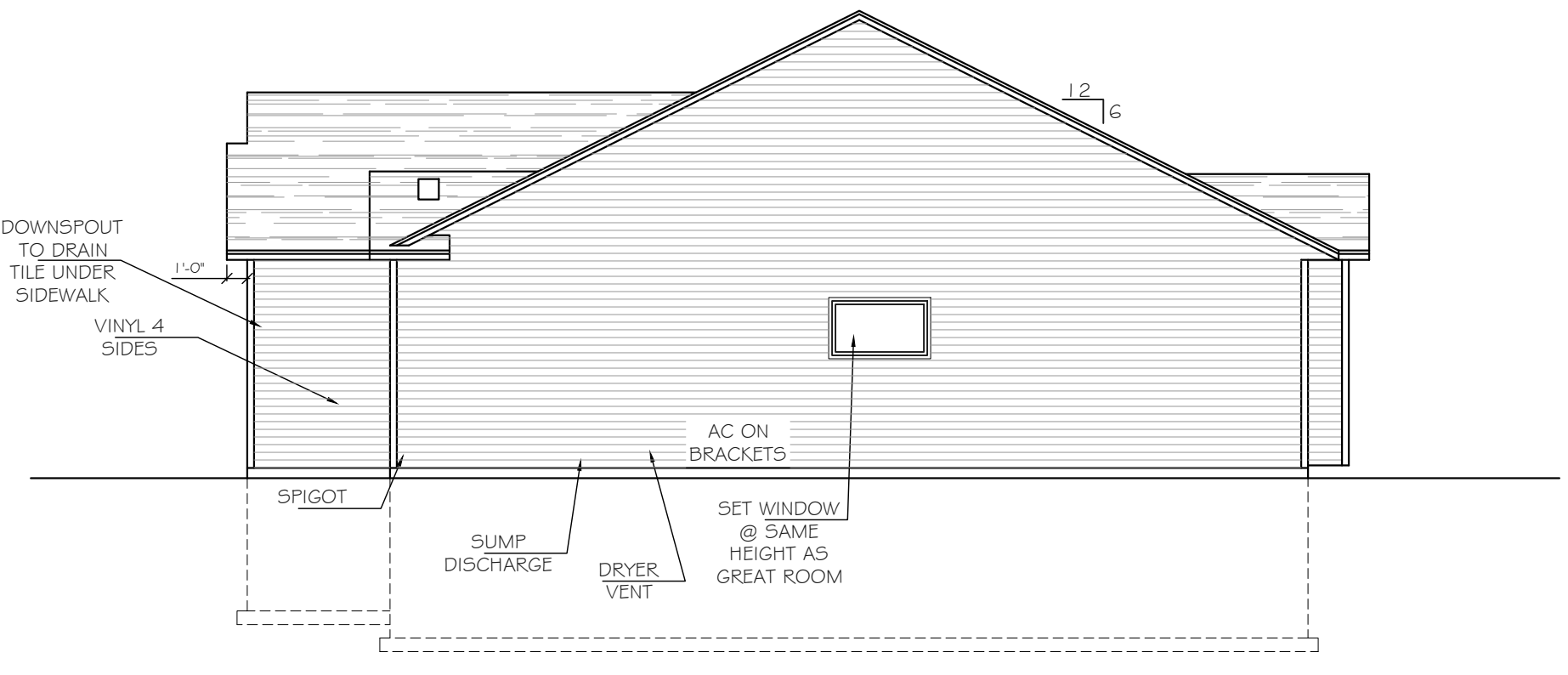
Fin Sq Ft: 2746



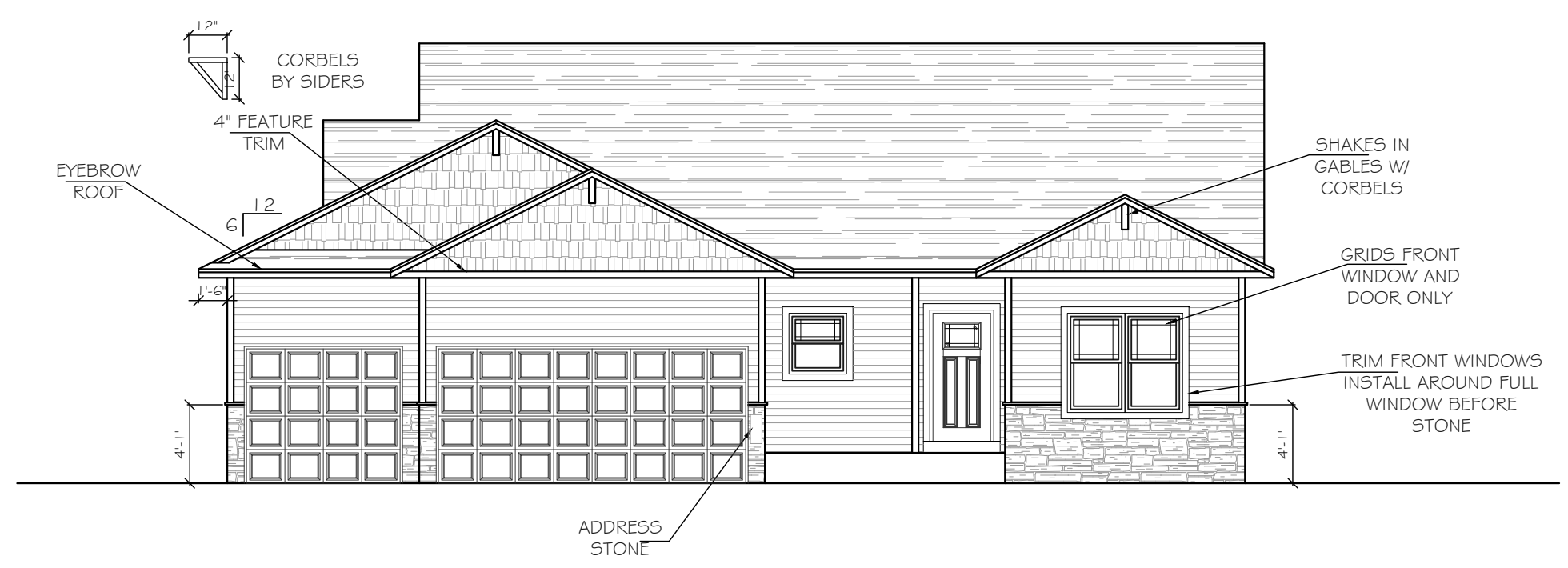
REAR ELEVATION
SCALE: 1/8" = 1'-0"



LEFT ELEVATION
SCALE: 1/8" = 1'-0"



RIGHT ELEVATION
SCALE: 1/8" = 1'-0"



FRONT ELEVATION
SCALE: 1/8" = 1'-0"

Intellectual property of Fieldstone Family Homes, Inc. © 2008. ALL RIGHTS RESERVED. These plan drawings, including but not limited to, all text, designs, renditions, floor plans, along with the selection and arrangement of thereof, are original copyrighted materials owned by Fieldstone Family Homes, Inc. These materials are protected by federal law against unauthorized copying, or reproduction by unauthorized persons and entities.

MN LIC: BC631164
WI LIC: DC-070800080

CLIENT:
Project:

LOCATION:
LOT _ BLK_ DEVELOPMENT

Street
CITY MN ZIP
JOB #:

REVISION 1	
REVISION 2	
REVISION 3	
REVISION 4	
REVISION 5	
REVISION 6	
REVISION 7	
REVISION 8	
REVISION 9	
REVISION 10	
REVISION 11	
FINAL	2.28.23

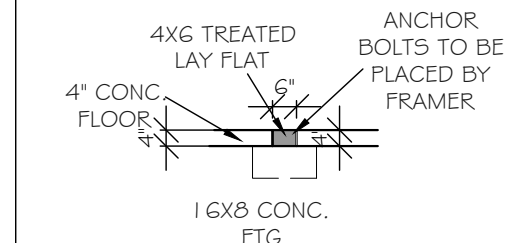
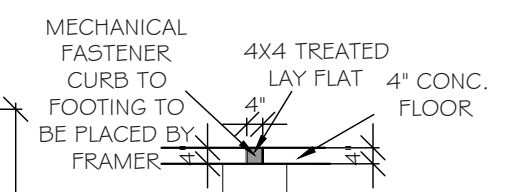
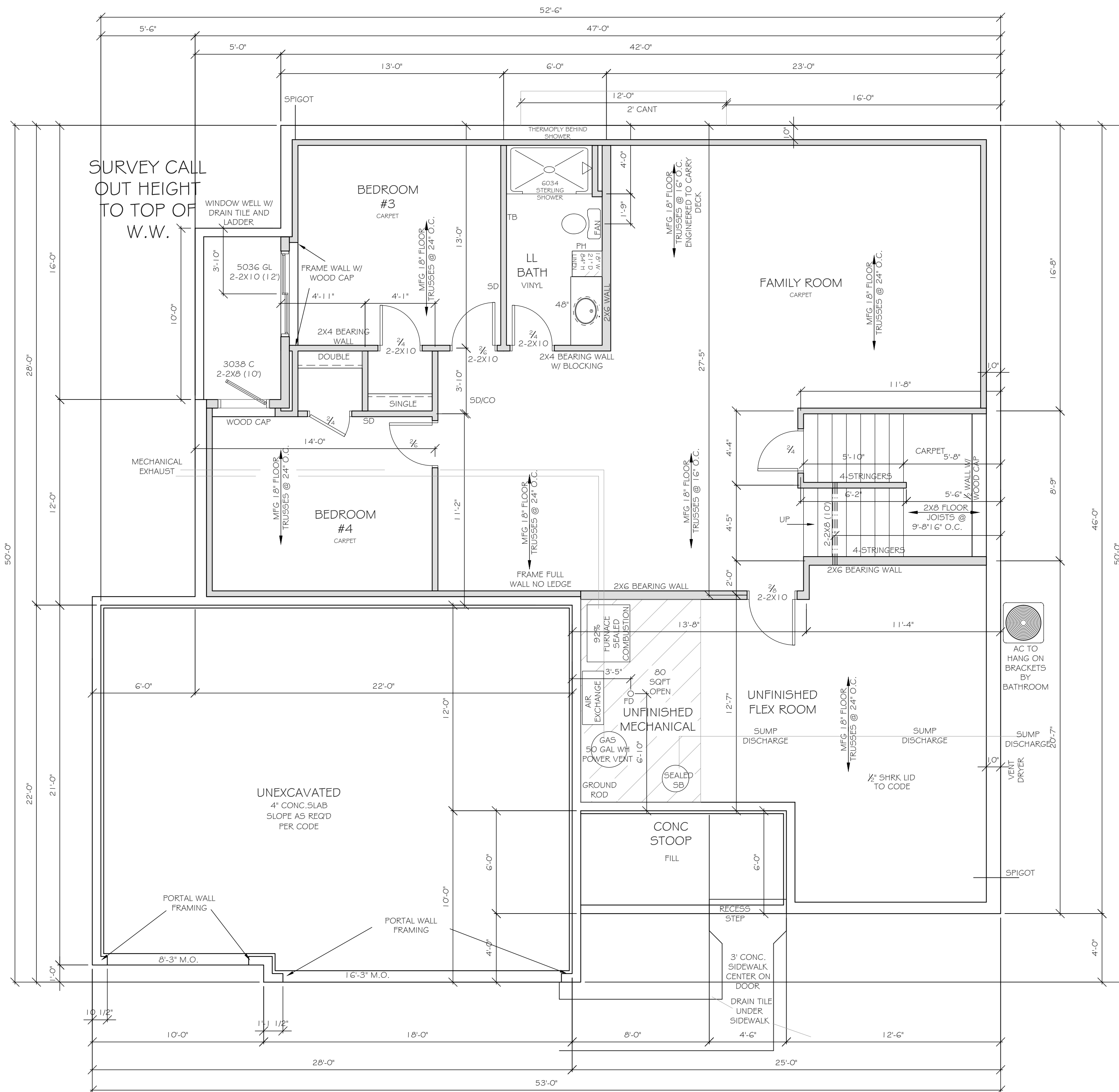
All changes after above date will be done according to F.F.H. Change Order Policy

Homeowner Signature

Agent:
Plan: EVERLEIGH
Total Foundation: 2297
House Foundation: 1611
Finished: 2746
Unfinished: 500

Scale: 1/4" = 1'-0"

Fin Sq Ft: 1111



FRAMER NOTES:
 -ALL WINDOWS/DOOR TO HAVE DOUBLE JACK STUDS
 -WINDOWS/DOORS LARGER THAN 8' TO HAVE DOUBLE KING STUDS

HD DURASTRAND SUB FLOOR MAIN LEVEL
 * FALL PROTECTION WINDOWS

Intellectual property of Fieldstone Family Homes, Inc. © 2008. ALL RIGHTS RESERVED. These plan drawings, including but not limited to, all text, designs, renditions, floor plans, along with the selection and arrangement of thereof, are original copyrighted materials owned by Fieldstone Family Homes, Inc. These materials are protected by federal law against unauthorized copying, or reproduction by unauthorized persons and entities.
 MN LIC: BC631164
 WI LIC: DC-070800080

CLIENT:
 Project:

LOCATION:
 LOT _ BLK_ DEVELOPMENT

Street
 CITY
 MN ZIP
 JOB #:

REVISION 1	
REVISION 2	
REVISION 3	
REVISION 4	
REVISION 5	
REVISION 6	
REVISION 7	
REVISION 8	
REVISION 9	
REVISION 10	
REVISION 11	
FINAL	2.28.23

All changes after above date will be done according to F.F.H. Change Order Policy

Homeowner Signature

Agent:
 Plan: EVERLEIGH
 Total Foundation: 2297
 House Foundation: 1611
 Finished: 2746
 Unfinished: 500

Scale: 1/4" = 1'-0"
 Fin Sq Ft: 1635

