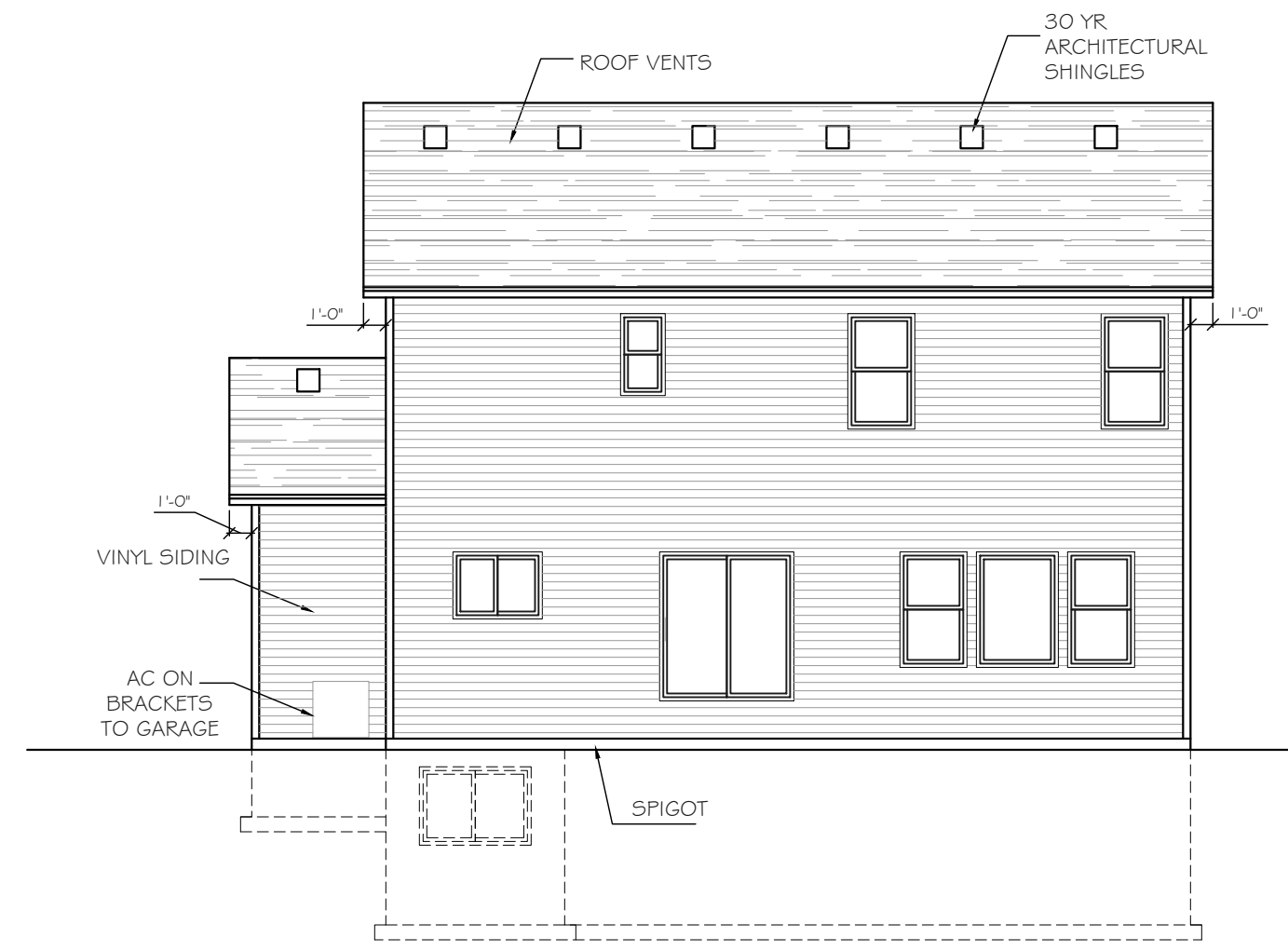
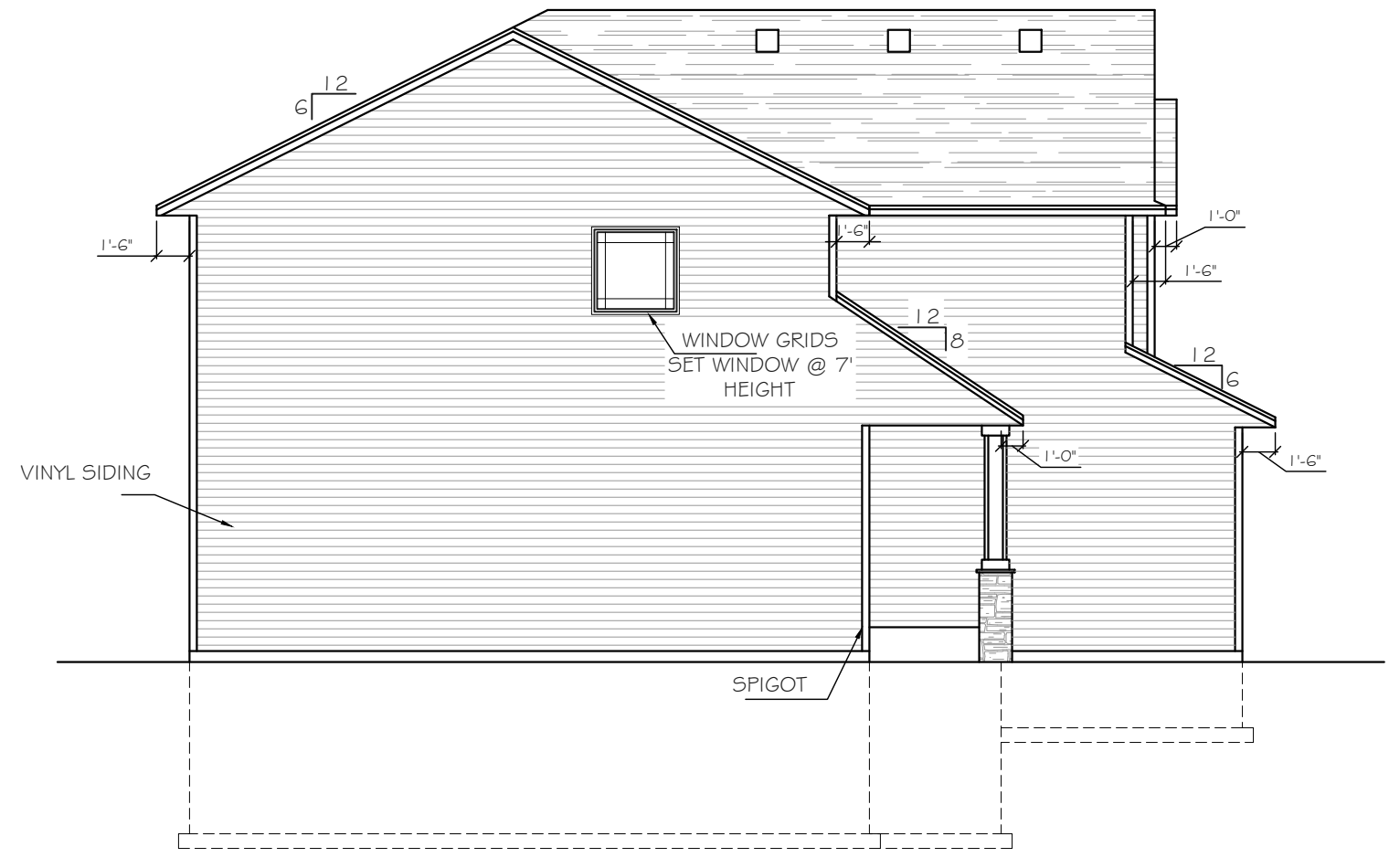


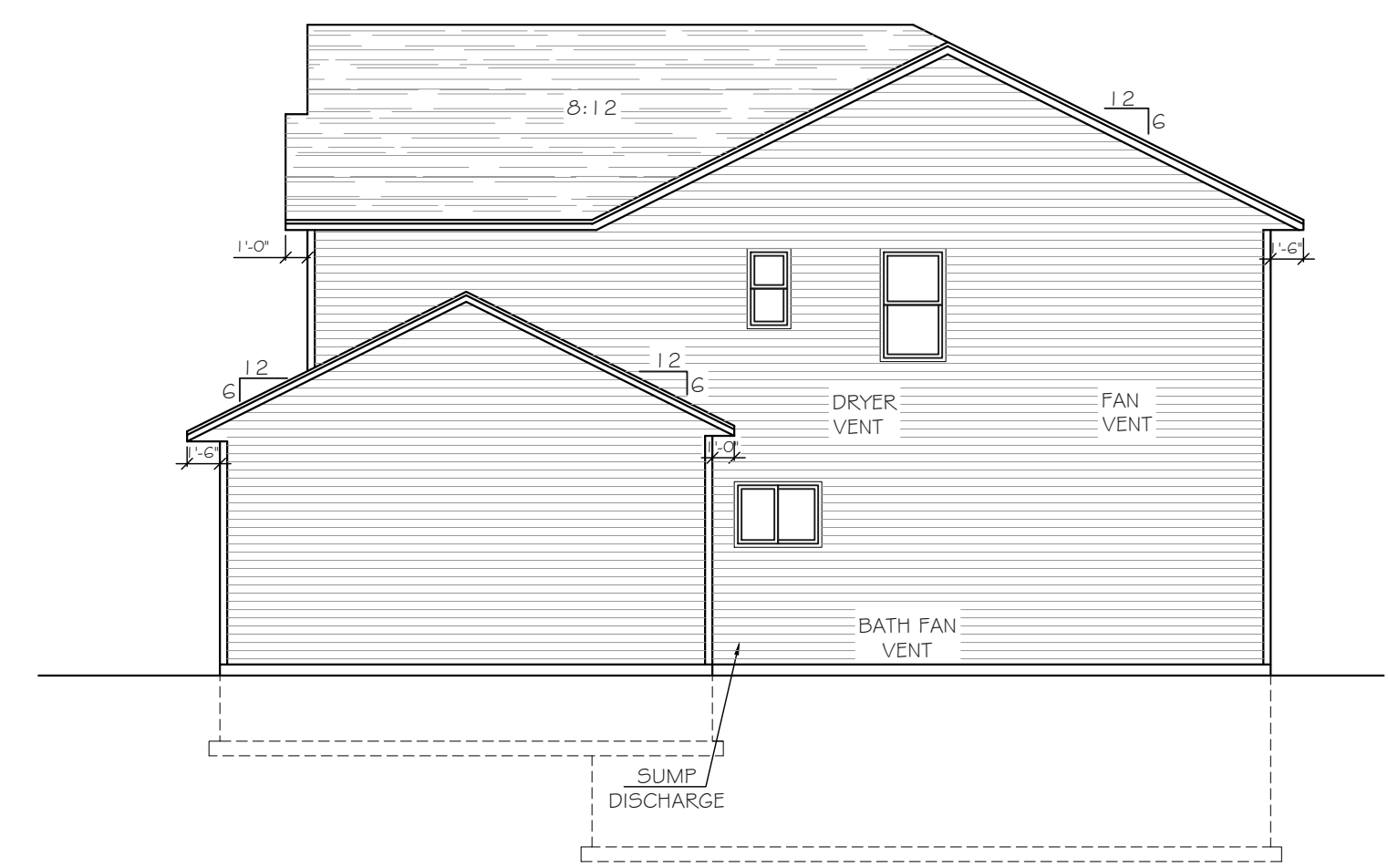
Intellectual property of Fieldstone Family Homes, Inc. © 2008. ALL RIGHTS RESERVED. These plan drawings, including but not limited to, all text, designs, renditions, floor plans, along with the selection and arrangement of thereof, are original copyrighted materials owned by Fieldstone Family Homes, Inc. These materials are protected by federal law against unauthorized copying, or reproduction by unauthorized persons and entities.
 MN LIC: BCG31164
 WI LIC: DC-070800080



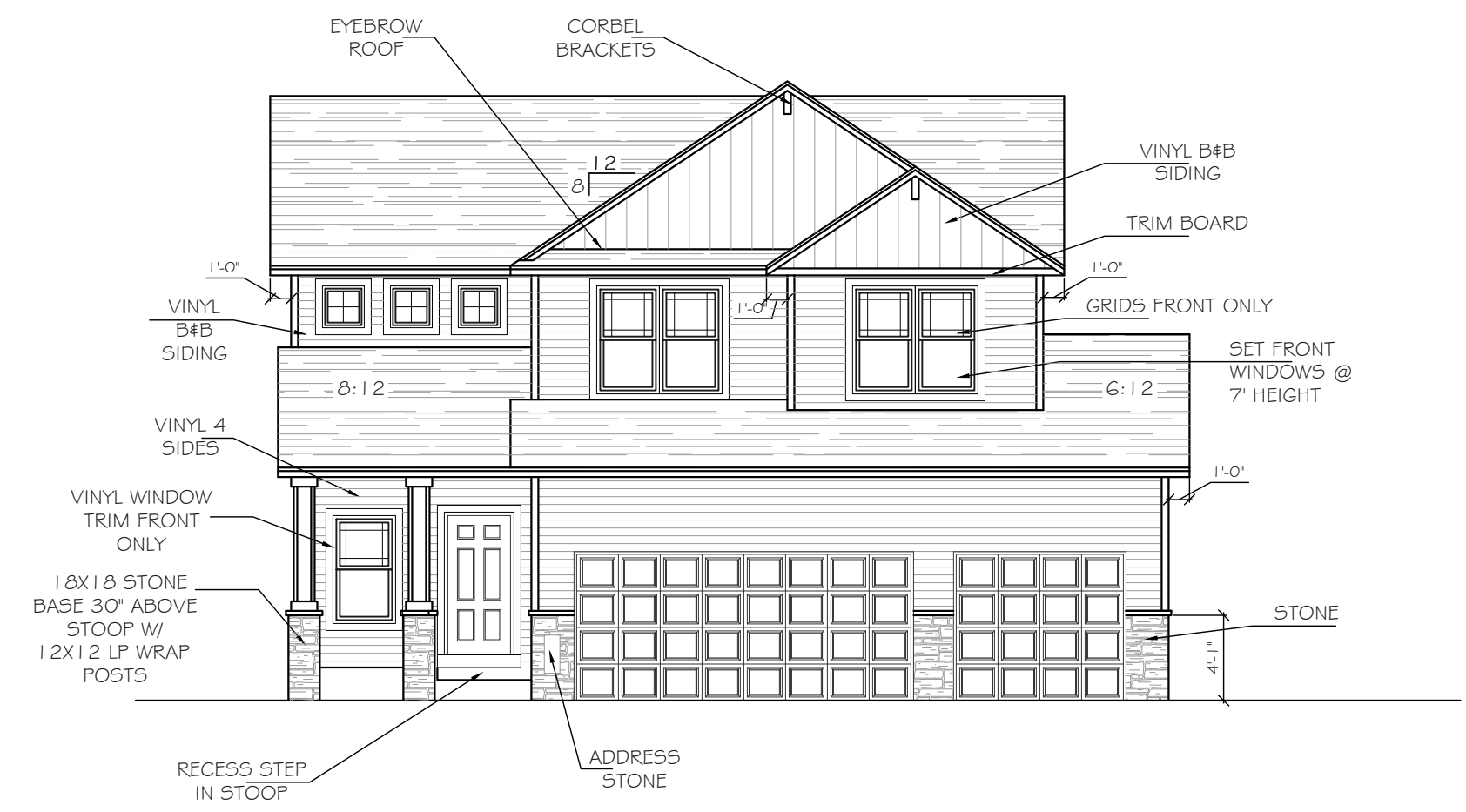
REAR ELEVATION
 SCALE: 1/8" = 1'-0"



LEFT ELEVATION
 SCALE: 1/8" = 1'-0"



RIGHT ELEVATION
 SCALE: 1/8" = 1'-0"



FRONT ELEVATION
 SCALE: 1/8" = 1'-0"

CLIENT:
 Project:

LOCATION:
 LOT _ BLK_ DEVELOPMENT
 Street
 CITY
 MN ZIP
 JOB #:

| | |
|-------------|---------|
| REVISION 1 | |
| REVISION 2 | |
| REVISION 3 | |
| REVISION 4 | |
| REVISION 5 | |
| REVISION 6 | |
| REVISION 7 | |
| REVISION 8 | |
| REVISION 9 | |
| REVISION 10 | |
| REVISION 11 | |
| FINAL | 2.28.23 |

All changes after above date will be done according to F.F.H. Change Order Policy

Homeowner Signature

Agent:
 Plan: ENCLAVE II
 Total Foundation: 1737
 House Foundation: 996
 Finished: 2455
 Unfinished: 942

Scale: 1/8" = 1'-0"

Fin Sq Ft: 2455

Intellectual property of Fieldstone Family Homes, Inc. © 2008. ALL RIGHTS RESERVED. These plan drawings, including but not limited to, all text, designs, renditions, floor plans, along with the selection and arrangement of thereof, are original copyrighted materials owned by Fieldstone Family Homes, Inc. These materials are protected by federal law against unauthorized copying, or reproduction by unauthorized persons and entities.

MN LIC: BC63 1164
WI LIC: DC-070800080

CLIENT:
Project:

LOCATION:
LOT _ BLK_ DEVELOPMENT

Street
CITY
MN ZIP
JOB #:

| | |
|-------------|---------|
| REVISION 1 | |
| REVISION 2 | |
| REVISION 3 | |
| REVISION 4 | |
| REVISION 5 | |
| REVISION 6 | |
| REVISION 7 | |
| REVISION 8 | |
| REVISION 9 | |
| REVISION 10 | |
| REVISION 11 | |
| FINAL | 2.28.23 |

All changes after above date will be done according to F.F.H. Change Order Policy

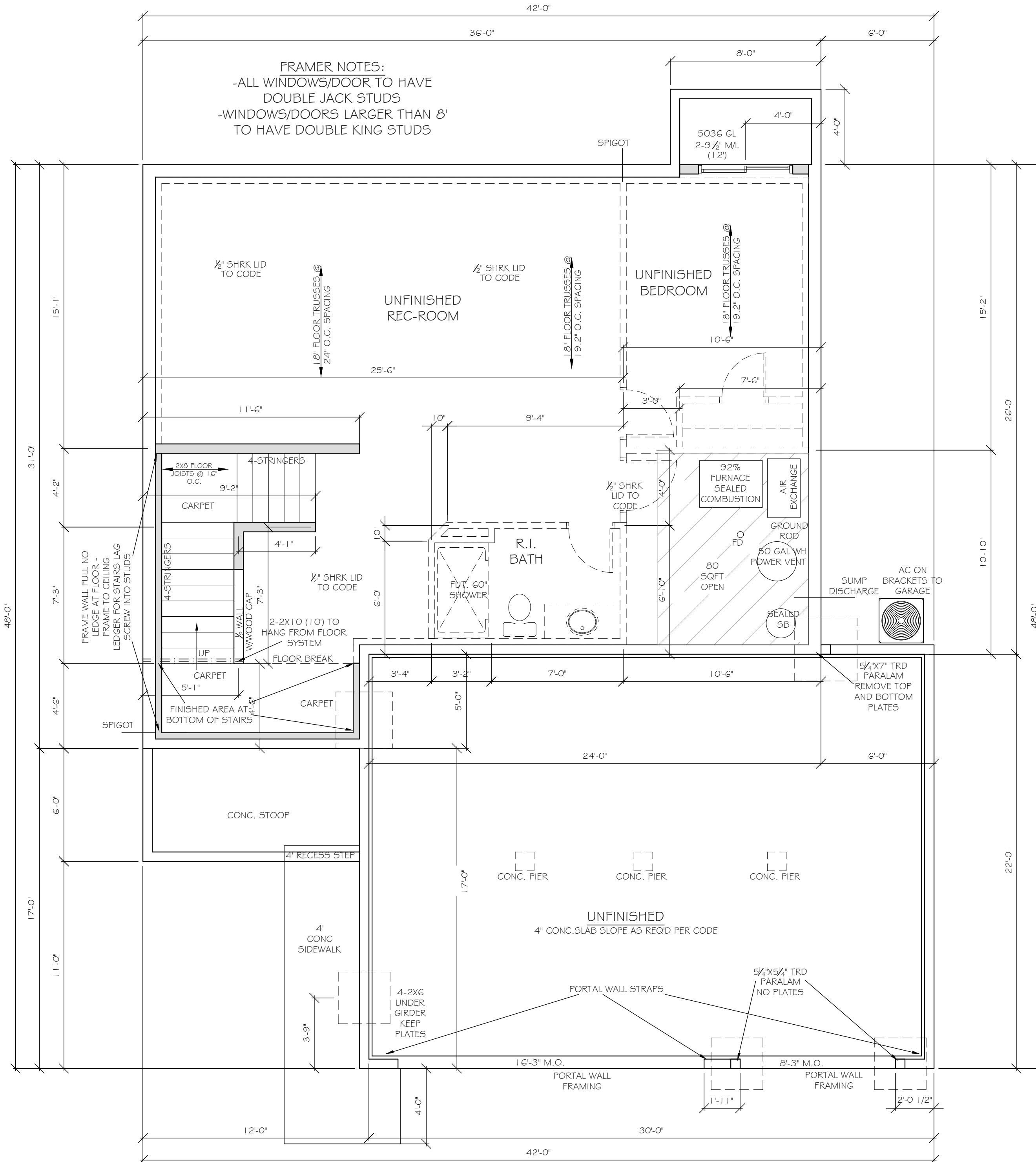
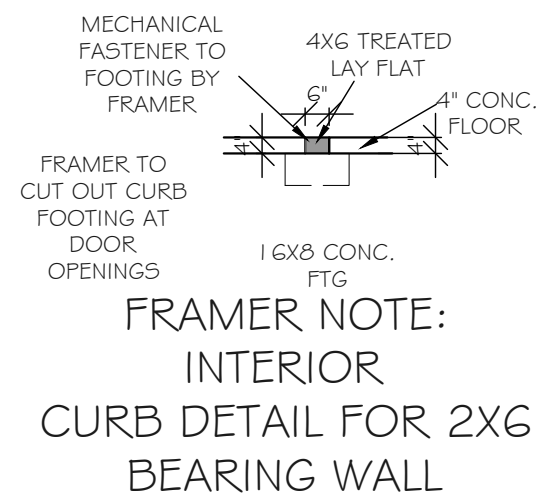
Homeowner
Signature

Agent:
Plan: ENCLAVE II
Total Foundation: 1737
House Foundation: 996
Finished: 2455
Unfinished: 942

Scale: 1/4" = 1'-0"

Fin Sq Ft: 54

FRAMER NOTES:
-ALL WINDOWS/DOOR TO HAVE DOUBLE JACK STUDS
-WINDOWS/DOORS LARGER THAN 8' TO HAVE DOUBLE KING STUDS



Intellectual property of Fieldstone Family Homes, Inc. © 2008. ALL RIGHTS RESERVED. These plan drawings, including but not limited to, all text, designs, renditions, floor plans, along with the selection and arrangement of thereof, are original copyrighted materials owned by Fieldstone Family Homes, Inc. These materials are protected by federal law against unauthorized copying, or reproduction by unauthorized persons and entities.

MN LIC: BC631164
WI LIC: DC-070800080

CLIENT:
Project:

LOCATION:
LOT _ BLK_ DEVELOPMENT

Street
CITY
MN ZIP
JOB #:

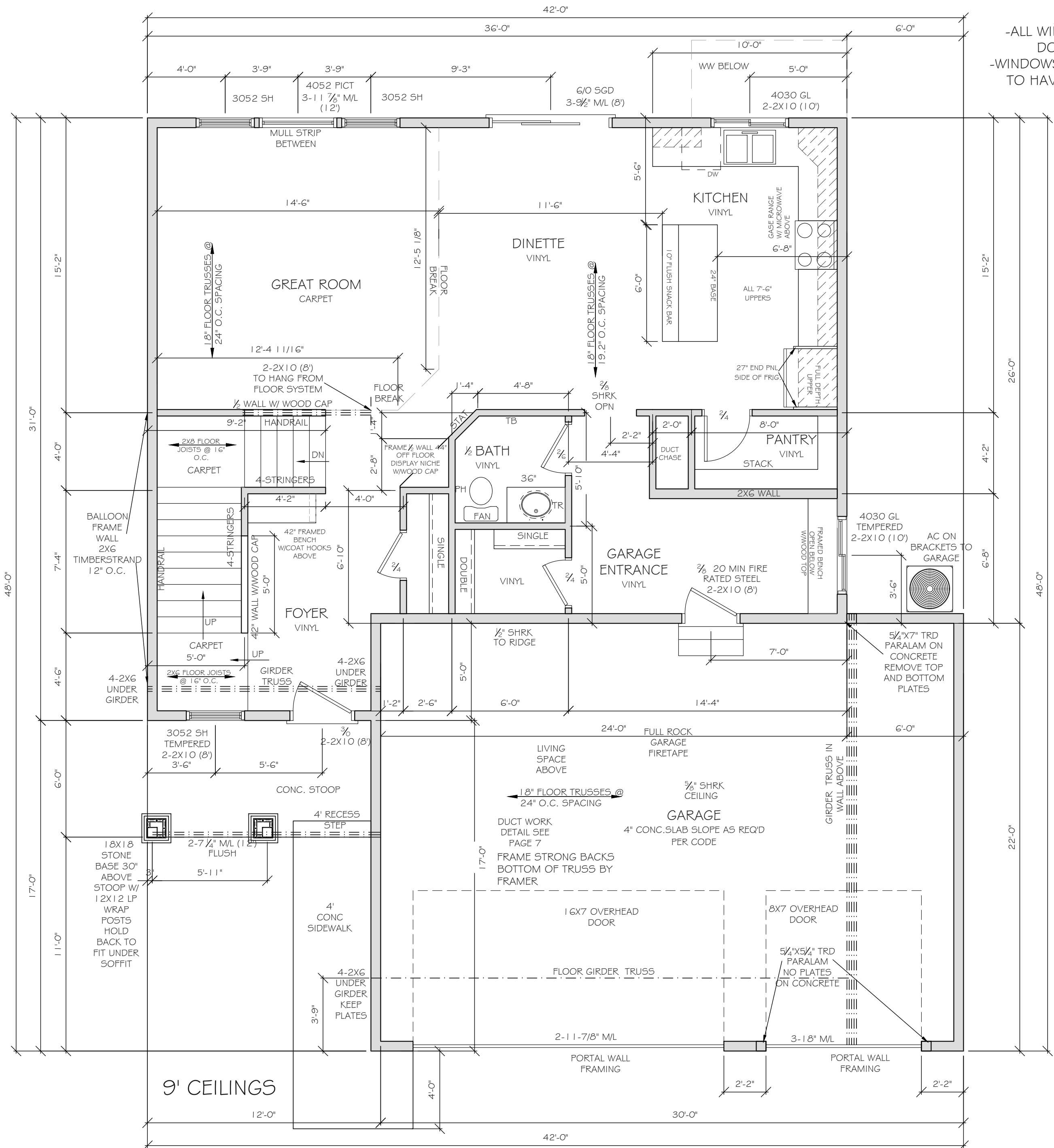
| | |
|-------------|---------|
| REVISION 1 | |
| REVISION 2 | |
| REVISION 3 | |
| REVISION 4 | |
| REVISION 5 | |
| REVISION 6 | |
| REVISION 7 | |
| REVISION 8 | |
| REVISION 9 | |
| REVISION 10 | |
| REVISION 11 | |
| FINAL | 2.28.23 |

All changes after above date will be done according to F.F.H. Change Order Policy

Homeowner Signature

Agent:
Plan: ENCLAVE II
Total Foundation: 1737
House Foundation: 996
Finished: 2455
Unfinished: 942

Scale: 1/4" = 1'-0"
Fin Sq Ft: 996



FRAMER NOTES:
-ALL WINDOWS/DOOR TO HAVE DOUBLE JACK STUDS
-WINDOWS/DOORS LARGER THAN 8' TO HAVE DOUBLE KING STUDS

FRAMED BENCH
FOYER & GARAGE
ENTRANCE NO
HOOK STRIP AT
GARAGE ENTRANCE

Intellectual property of Fieldstone Family Homes, Inc. © 2008. ALL RIGHTS RESERVED. These plan drawings, including but not limited to, all text, designs, renditions, floor plans, along with the selection and arrangement of thereof, are original copyrighted materials owned by Fieldstone Family Homes, Inc. These materials are protected by federal law against unauthorized copying, or reproduction by unauthorized persons and entities.

MN LIC: BC631164
WI LIC: DC-070800080

CLIENT:
Project:

LOCATION:
LOT _ BLK _
DEVELOPMENT

Street
CITY
MN ZIP
JOB #:

| | |
|-------------|---------|
| REVISION 1 | |
| REVISION 2 | |
| REVISION 3 | |
| REVISION 4 | |
| REVISION 5 | |
| REVISION 6 | |
| REVISION 7 | |
| REVISION 8 | |
| REVISION 9 | |
| REVISION 10 | |
| REVISION 11 | |
| FINAL | 2.28.23 |

All changes after above date will be done according to F.F.H. Change Order Policy

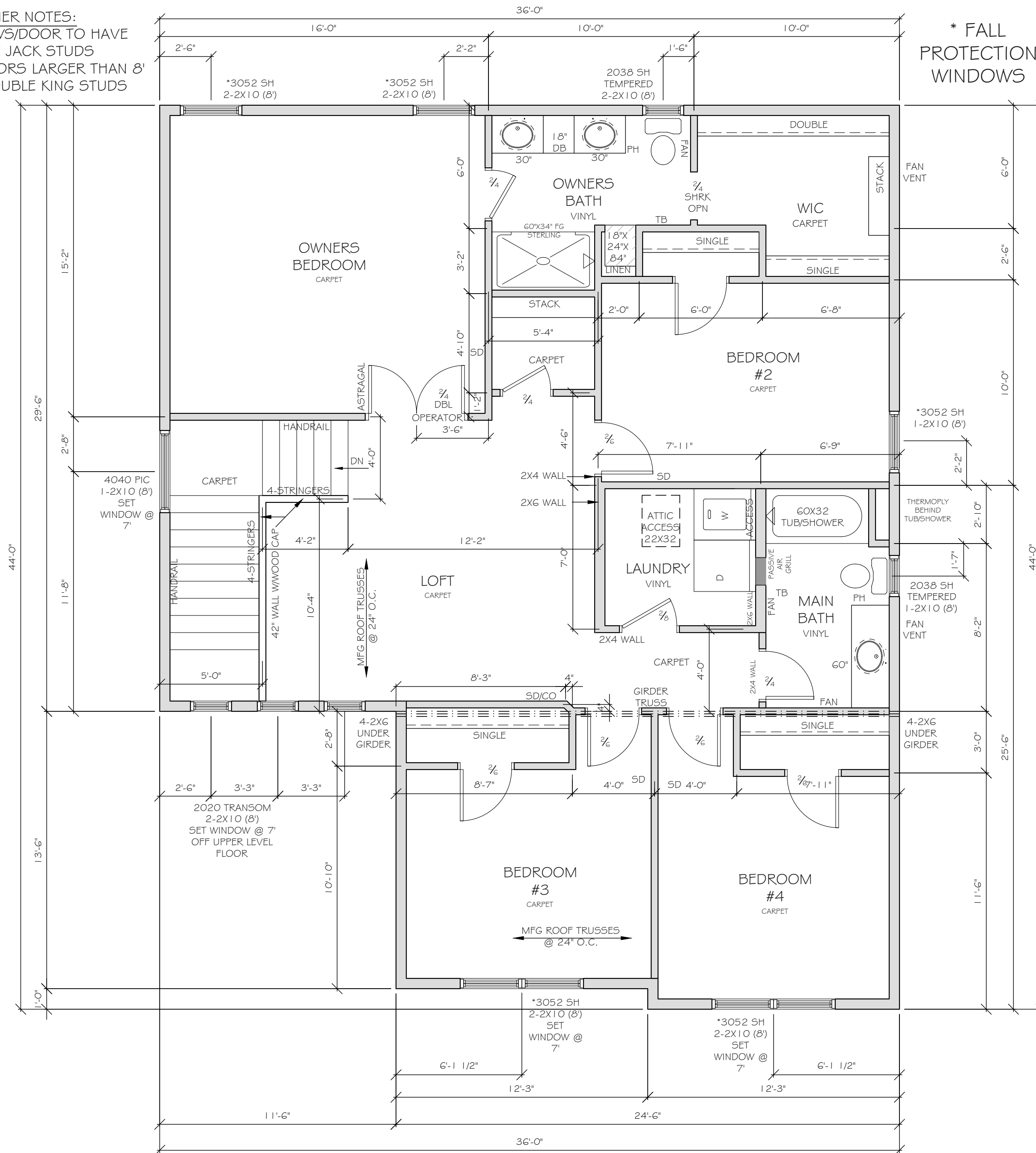
Homeowner
Signature

Agent:
Plan: ENCLAVE II
Total Foundation: 1737
House Foundation: 996
Finished: 2455
Unfinished: 942

Scale: 1/4" = 1'-0"

Fin Sq Ft: 1405

FRAMER NOTES:
-ALL WINDOWS/DOOR TO HAVE DOUBLE JACK STUDS
-WINDOWS/DOORS LARGER THAN 8' TO HAVE DOUBLE KING STUDS



* FALL PROTECTION WINDOWS