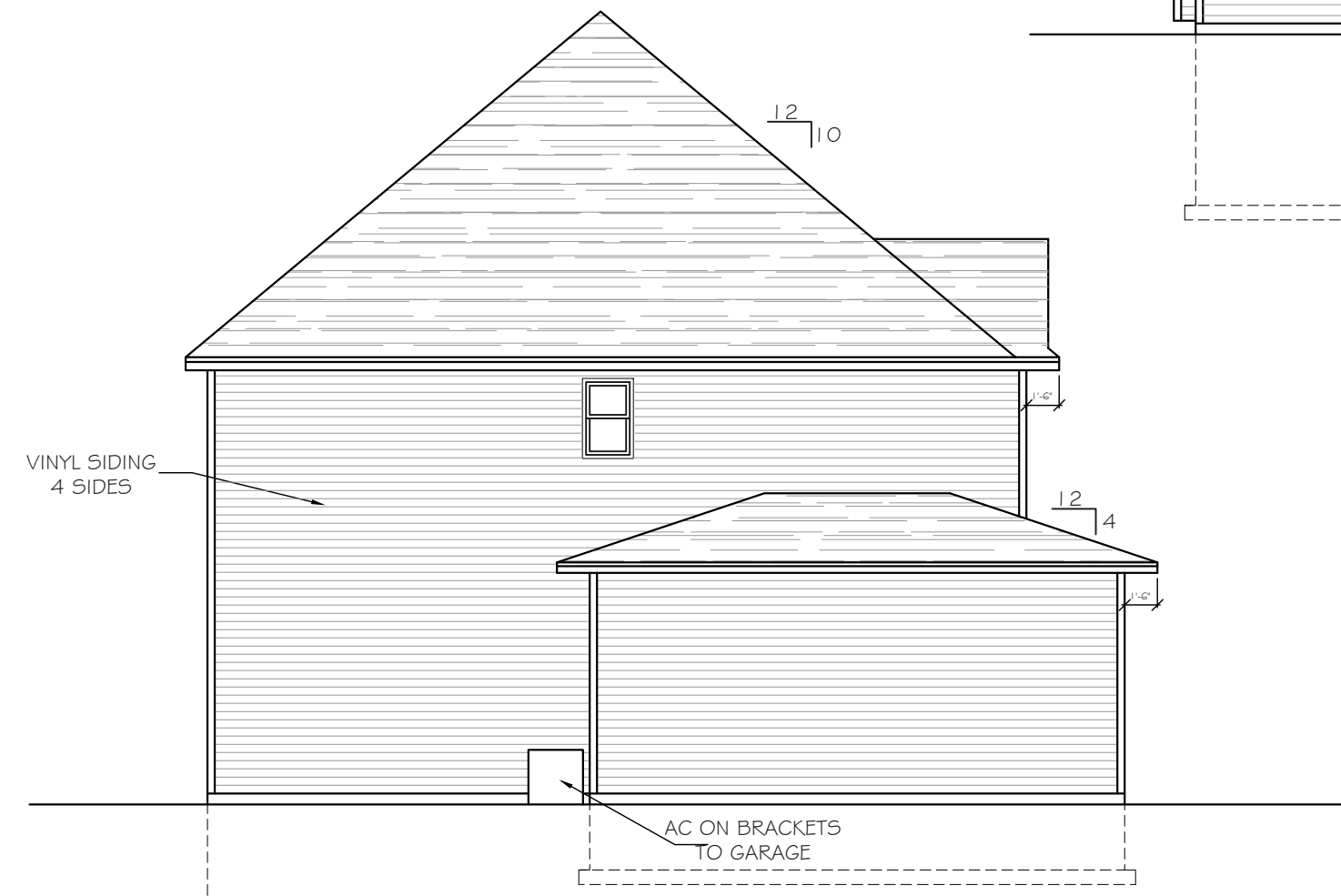


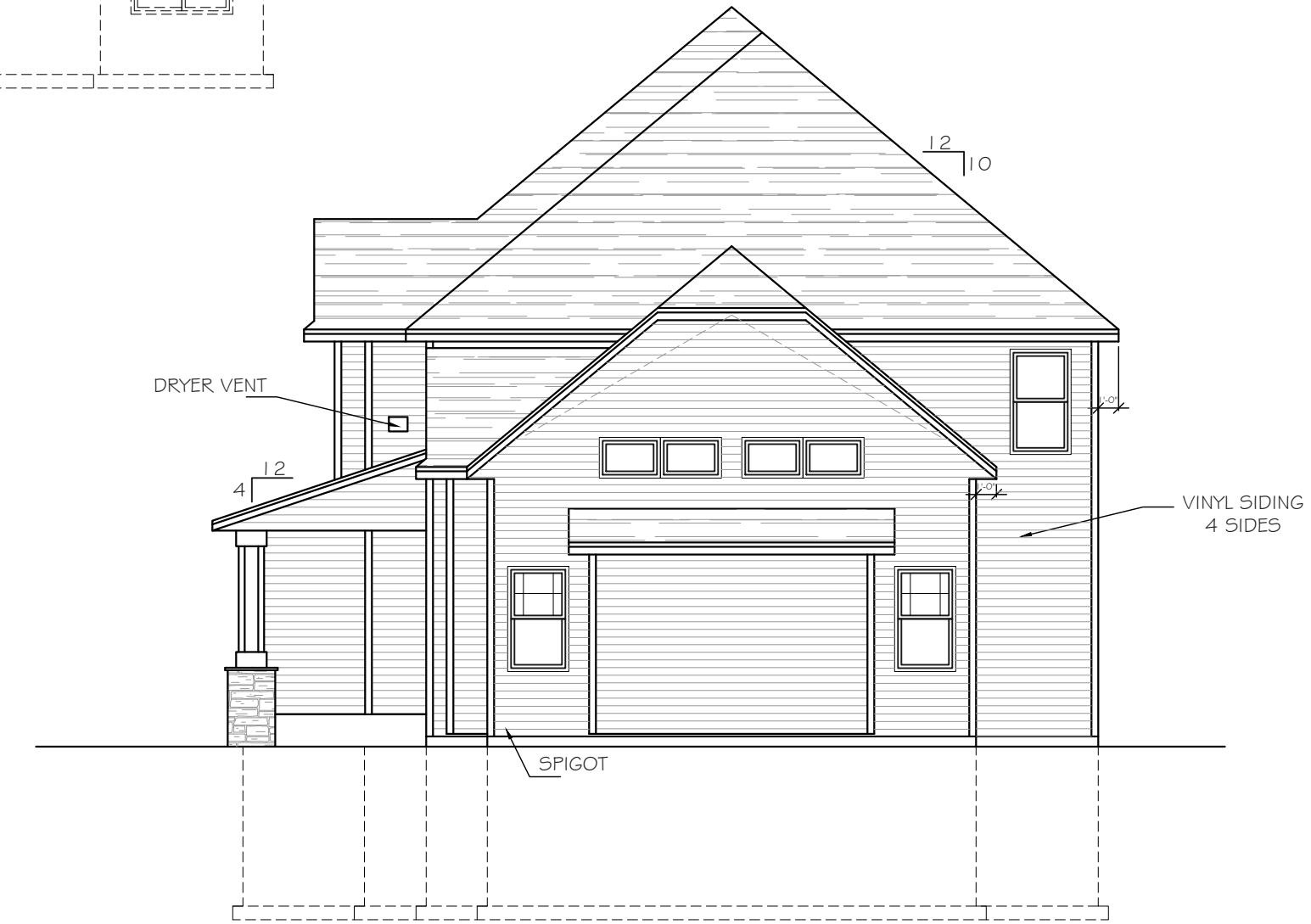
Intellectual property of Fieldstone Family Homes, Inc. © 2008. ALL RIGHTS RESERVED. These plan drawings, including but not limited to, all text, designs, renditions, floor plans, along with the selection and arrangement of thereof, are original copyrighted materials owned by Fieldstone Family Homes, Inc. These materials are protected by federal law against unauthorized copying, or reproduction by unauthorized persons and entities.
 MN LIC: BC631164
 WI LIC: DC-070800080



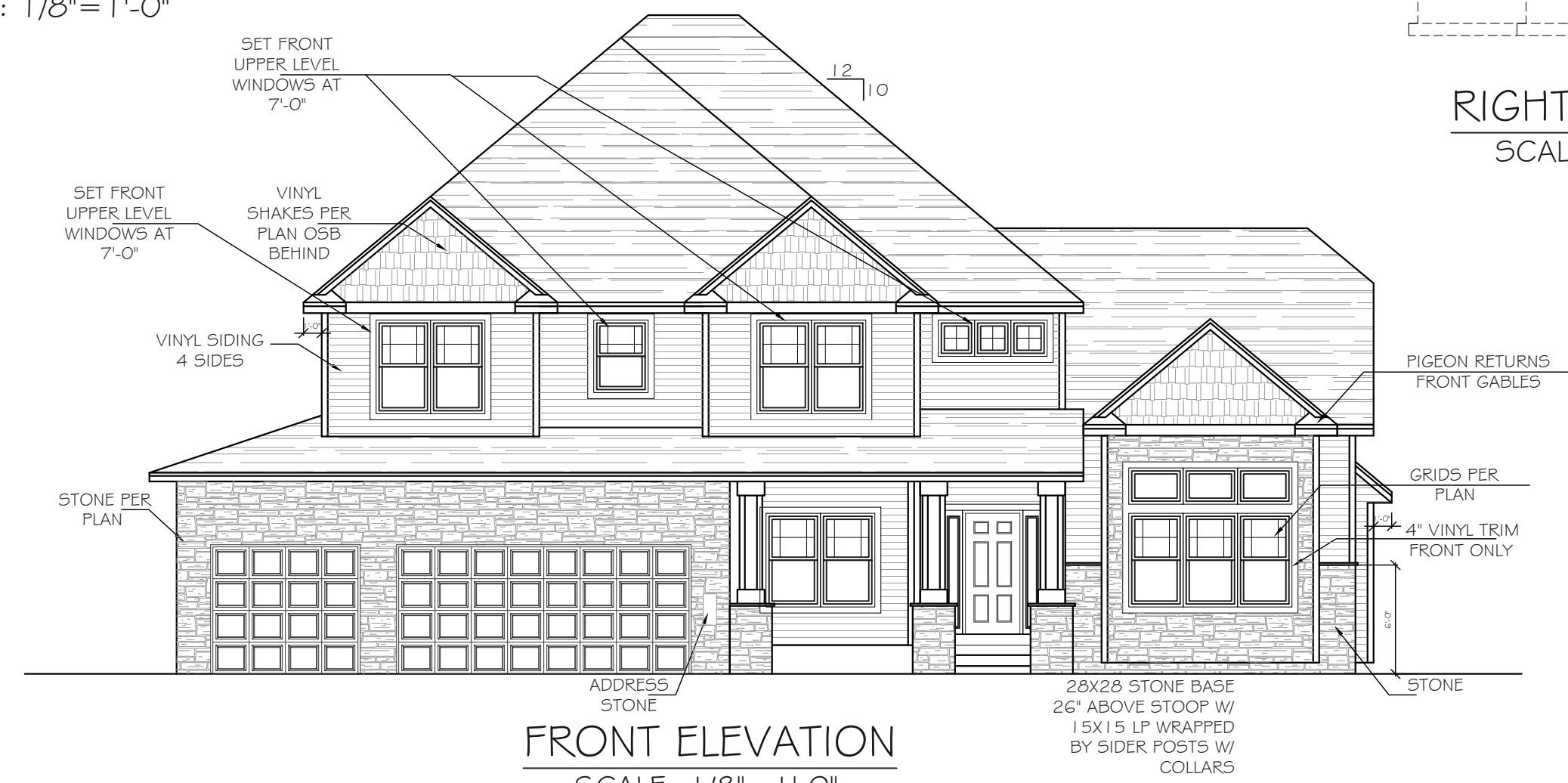
REAR ELEVATION
 SCALE: 1/8" = 1'-0"



LEFT ELEVATION
 SCALE: 1/8" = 1'-0"



RIGHT ELEVATION
 SCALE: 1/8" = 1'-0"



FRONT ELEVATION
 SCALE: 1/8" = 1'-0"

CLIENT:
 Project:

LOCATION:
 LOT _ BLK_ DEVELOPMENT

Street
 CITY
 MN ZIP
 JOB #:

| | |
|-------------|---------|
| REVISION 1 | |
| REVISION 2 | |
| REVISION 3 | |
| REVISION 4 | |
| REVISION 5 | |
| REVISION 6 | |
| REVISION 7 | |
| REVISION 8 | |
| REVISION 9 | |
| REVISION 10 | |
| REVISION 11 | |
| FINAL | 2.28.23 |

All changes after above date will be done according to F.F.H. Change Order Policy

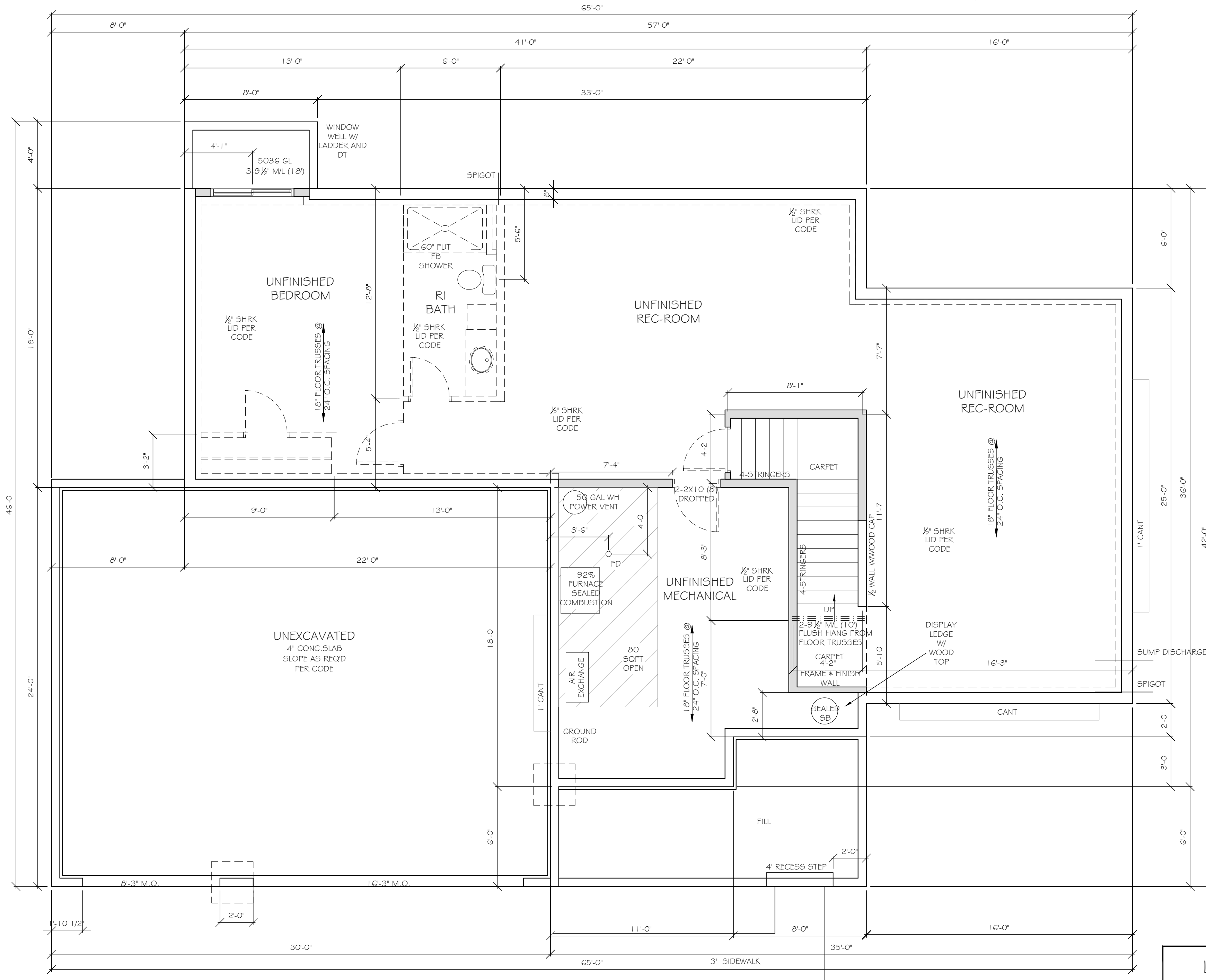
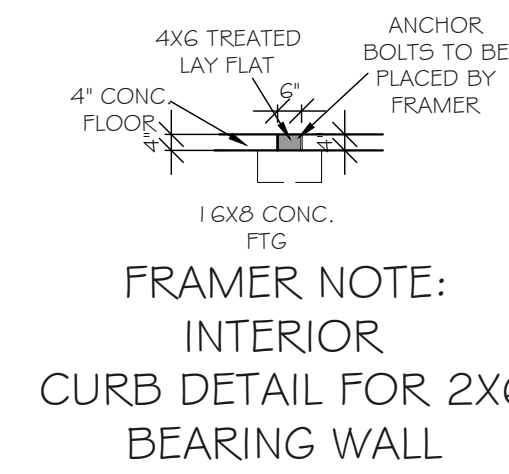
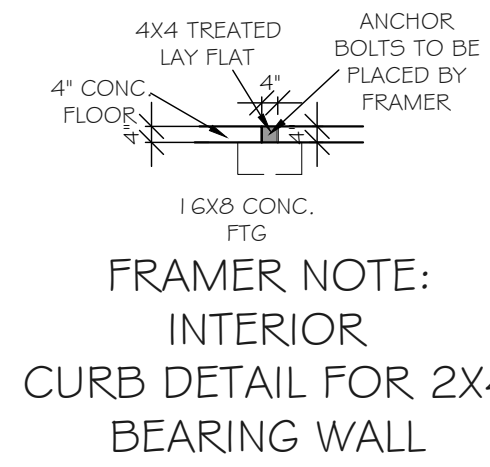
Homeowner Signature

Agent:
 Plan: BELLEFONTE
 Total Foundation: 2318
 House Foundation: 1456
 Finished: 3054
 Unfinished: 1376

Scale: 1/4" = 1'-0"

Fin Sq Ft: 3054

FRAMER NOTES:
 -ALL WINDOWS/DOOR TO HAVE DOUBLE JACK STUDS
 -WINDOWS/DOORS LARGER THAN 8' TO HAVE DOUBLE KING STUDS
 SEE PAGE 2 FOR ANCHOR BOLT LAYOUT FOR 1' TRD PLATE AND 1" SPLICES



Intellectual property of Fieldstone Family Homes, Inc. © 2008. ALL RIGHTS RESERVED. These plan drawings, including but not limited to, all text, designs, renditions, floor plans, along with the selection and arrangement of thereof, are original copyrighted materials owned by Fieldstone Family Homes, Inc. These materials are protected by federal law against unauthorized copying, or reproduction by unauthorized persons and entities.
 MN LIC: BC631164
 WI LIC: DC-070800080

CLIENT:
 Project:

LOCATION:
 LOT _ BLK_ DEVELOPMENT
 Street
 CITY
 MN ZIP
 JOB #:

| | |
|-------------|---------|
| REVISION 1 | |
| REVISION 2 | |
| REVISION 3 | |
| REVISION 4 | |
| REVISION 5 | |
| REVISION 6 | |
| REVISION 7 | |
| REVISION 8 | |
| REVISION 9 | |
| REVISION 10 | |
| REVISION 11 | |
| FINAL | 2.28.23 |

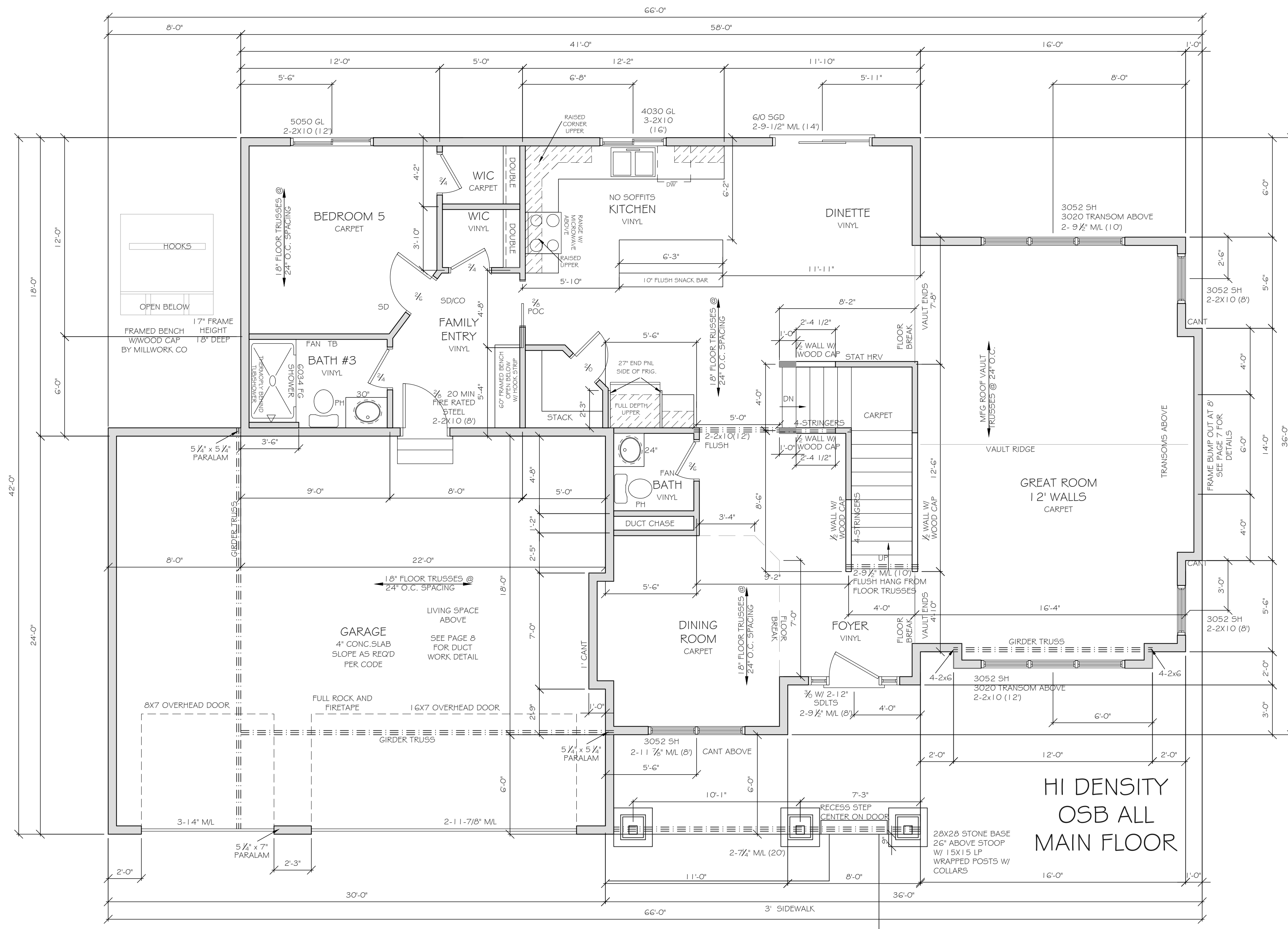
All changes after above date will be done according to F.F.H. Change Order Policy

Homeowner Signature

Agent:
 Plan: BELLEFONTE
 Total Foundation: 2318
 House Foundation: 1456
 Finished: 3054
 Unfinished: 1376

Scale: 1/4" = 1'-0"

Fin Sq Ft: 80



Intellectual property of Fieldstone Family Homes, Inc. © 2008. ALL RIGHTS RESERVED. These plan drawings, including but not limited to, all text, designs, renditions, floor plans, along with the selection and arrangement of thereof, are original copyrighted materials owned by Fieldstone Family Homes, Inc. These materials are protected by federal law against unauthorized copying, or reproduction by unauthorized persons and entities.

MN LIC: BC631164
WI LIC: DC-070800080

CLIENT:
Project:

LOCATION:
LOT _ BLK_ DEVELOPMENT

Street
CITY MN ZIP
JOB #:

| | |
|-------------|---------|
| REVISION 1 | |
| REVISION 2 | |
| REVISION 3 | |
| REVISION 4 | |
| REVISION 5 | |
| REVISION 6 | |
| REVISION 7 | |
| REVISION 8 | |
| REVISION 9 | |
| REVISION 10 | |
| REVISION 11 | |
| FINAL | 2.28.23 |

All changes after above date will be done according to F.F.H. Change Order Policy

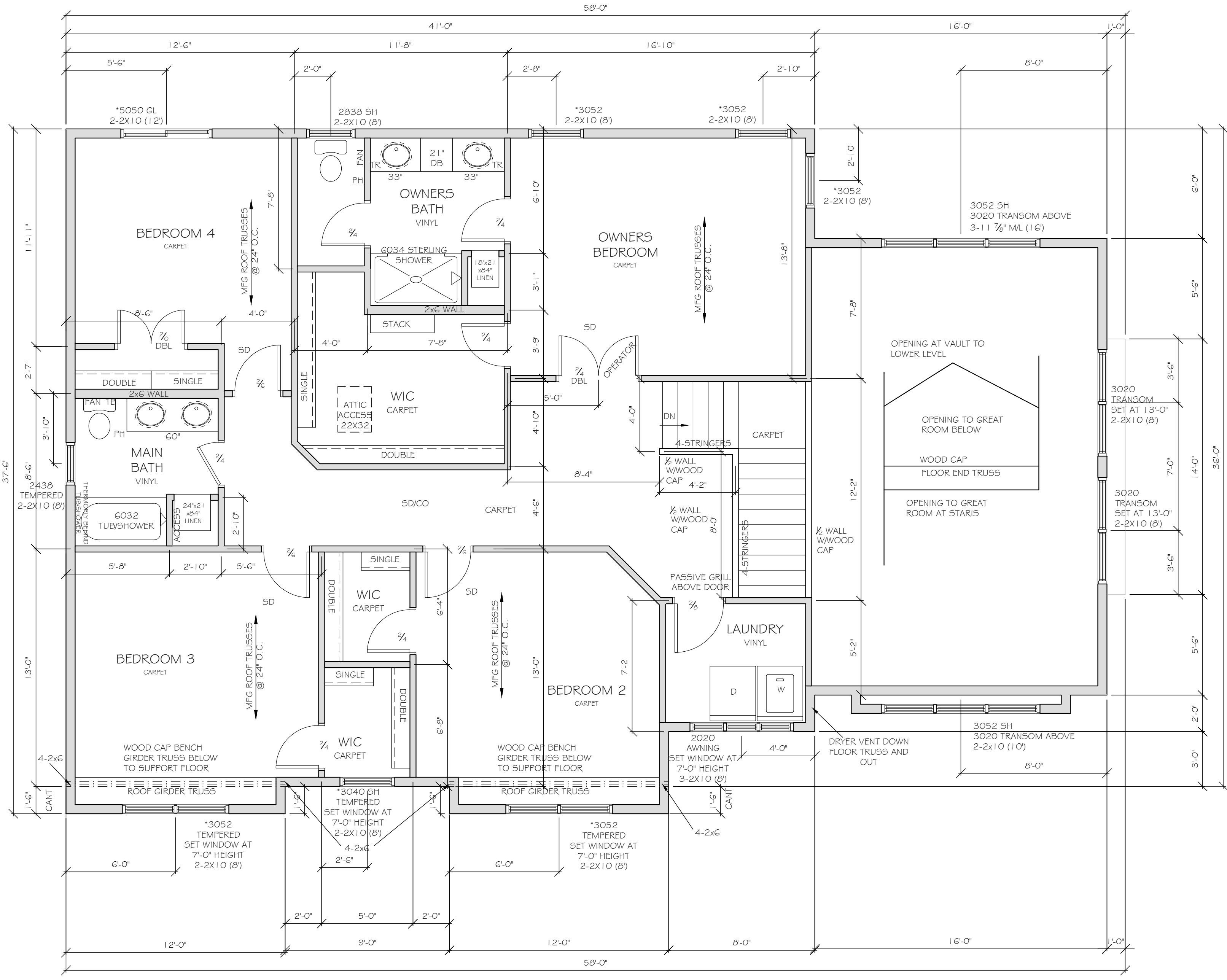
Homeowner Signature

Agent:
Plan: BELLEFONTE
Total Foundation: 2318
House Foundation: 1456
Finished: 3054
Unfinished: 1376

Scale: 1/4" = 1'-0"

Fin Sq Ft: 1489

Intellectual property of Fieldstone Family Homes, Inc. © 2008. ALL RIGHTS RESERVED. These plan drawings, including but not limited to, all text, designs, renditions, floor plans, along with the selection and arrangement of thereof, are original copyrighted materials owned by Fieldstone Family Homes, Inc. These materials are protected by federal law against unauthorized copying, or reproduction by unauthorized persons and entities.
 MN LIC: BC631164
 WI LIC: DC-070800080



CLIENT:
Project:

LOCATION:
LOT _ BLK_ DEVELOPMENT

Street
CITY
MN ZIP
JOB #:

| | |
|-------------|---------|
| REVISION 1 | |
| REVISION 2 | |
| REVISION 3 | |
| REVISION 4 | |
| REVISION 5 | |
| REVISION 6 | |
| REVISION 7 | |
| REVISION 8 | |
| REVISION 9 | |
| REVISION 10 | |
| REVISION 11 | |
| FINAL | 2.28.23 |

All changes after above date will be done according to F.F.H. Change Order Policy

Homeowner Signature

Agent:
Plan: BELLEFONTE
Total Foundation: 2318
House Foundation: 1456
Finished: 3054
Unfinished: 1376

Scale: 1/4" = 1'-0"

Fin Sq Ft: 1485